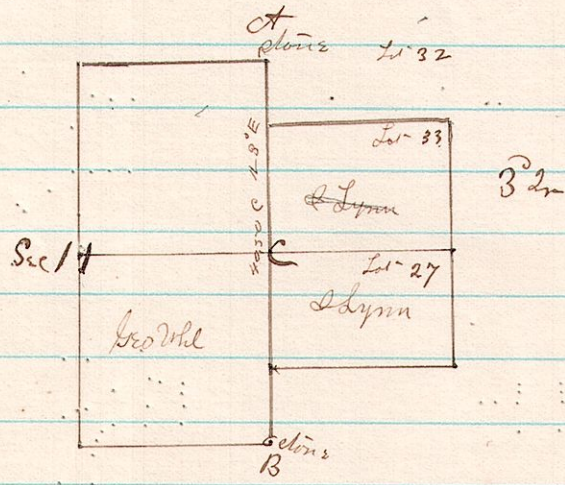


471 7 8 11 E line  
 6 8 33.27 W "

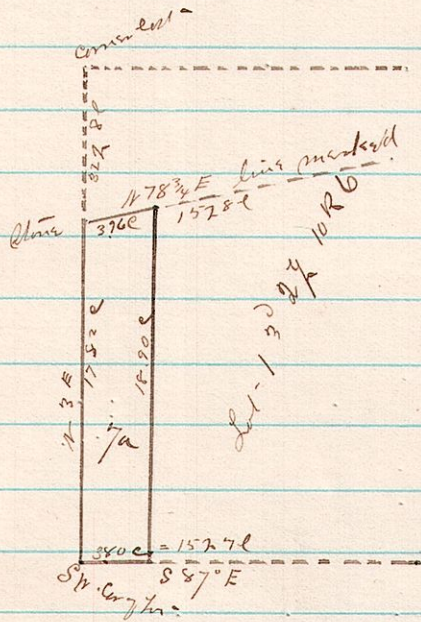


1897  
 1885  
 12  
 36

A Survey made to establish the line A.B. being the property line between Lyn & Geo. White on the line A.B. and established a corner at C on the 16<sup>th</sup> day of June A.D. 1885

James C. Calhoun  
 County Surveyor

472 6 10 32<sup>nd</sup> SW 1<sup>st</sup>



A Survey made for J.B. & Sample Painter of the piece above plat'd on the 17<sup>th</sup> day of June A.D. 1885

James C. Calhoun  
 County Surveyor