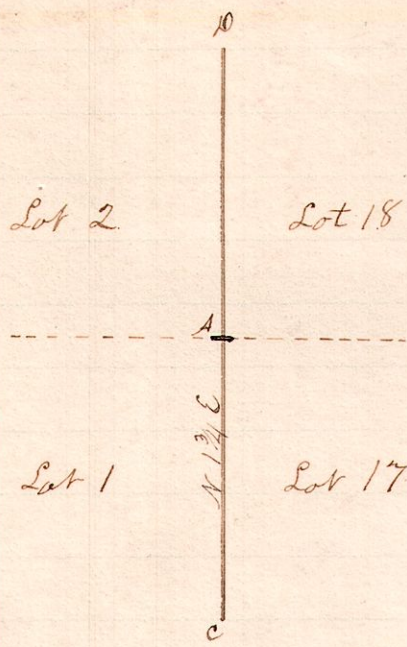


R. T. 25.

6 10 3

1.



A survey made at the request of E. S. Painter to establish the line between A. E. Painter and J. W. Painter and also the point A. Said line divides lots 1 & 2 in 3d 2r 7p from lots 17 & 18 in 4th 2r 7p. C is a stone at place of beginning.

April 28, 1886.

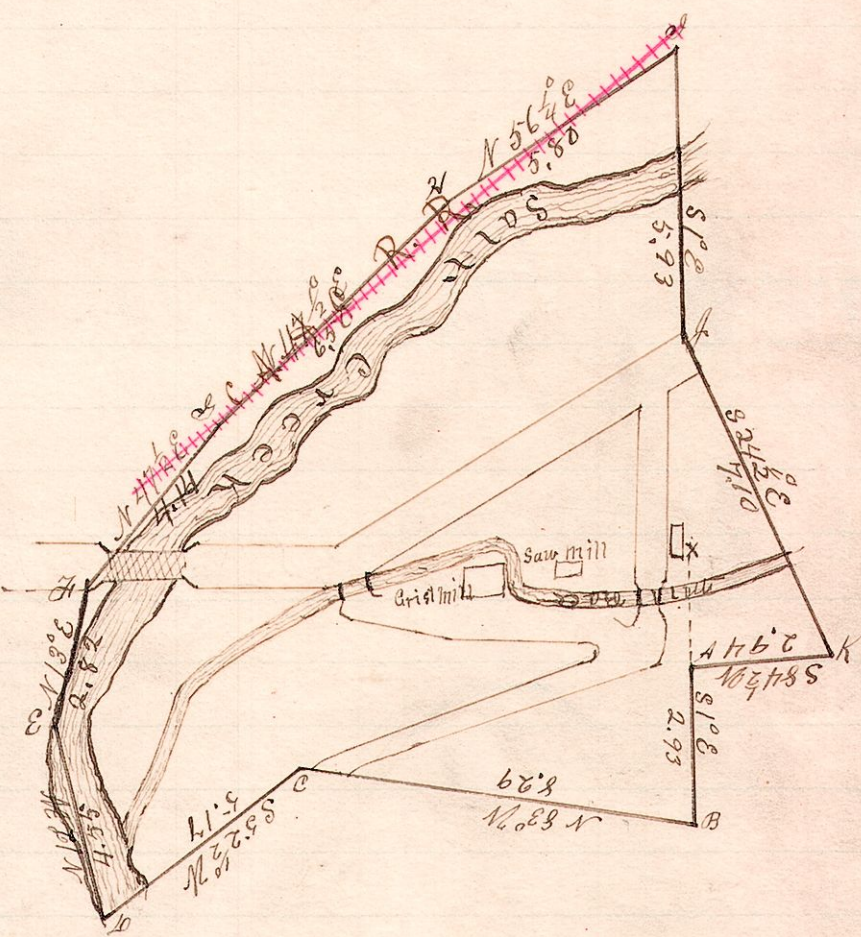
W. S. Hanna,
County Surveyor

R. T. S.

2.

13 14 36

Area 14.72 Acres.
Variation 2°



A survey made for Fred Klass to determine the boundaries, corners, and area of a tract of land known as the Red Mill Property. x is a stone at the center of Dec 36, and A is S 1° E 2.41 chains from x.

I certify the above to be a correct plat of said property.
Chain Carrier

Lem Anderson and Wm Venosdel.

May 17, 1886.

W. S. Hanna,
County Surveyor