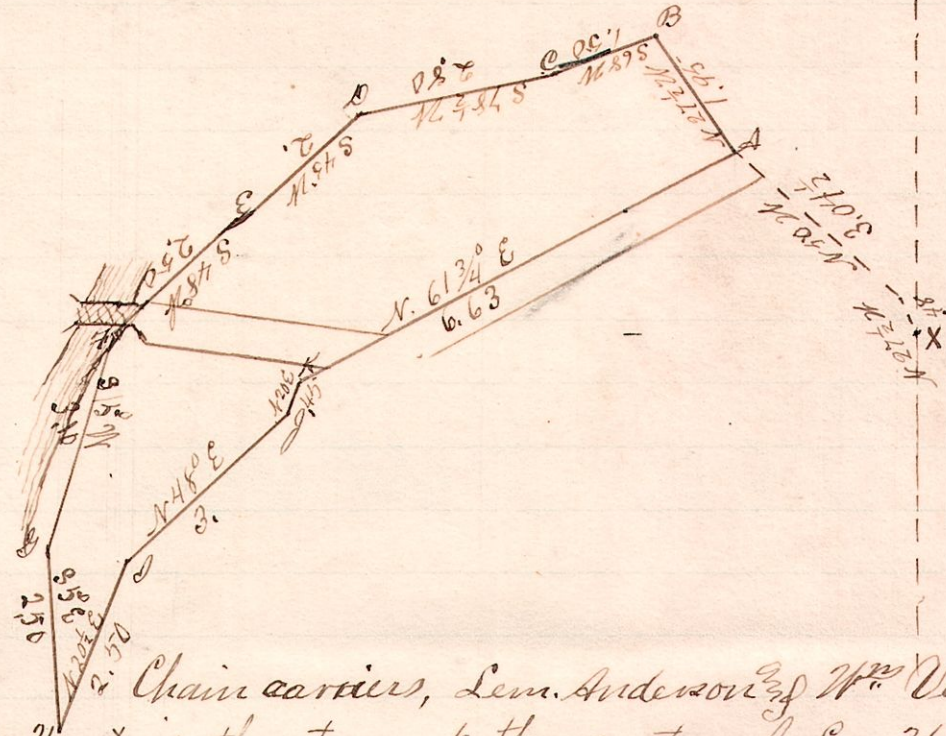


R. T. S

13 14 36

3.



Chain carriers, Lem. Anderson & Wm. Venosdel.
 X is the stone at the center of Sec 36 and is described in the preceding survey.

A survey made for Fred Klass to determine the corners of a piece of land which is situated near the center of the land described in plat No. 2. in this Book.

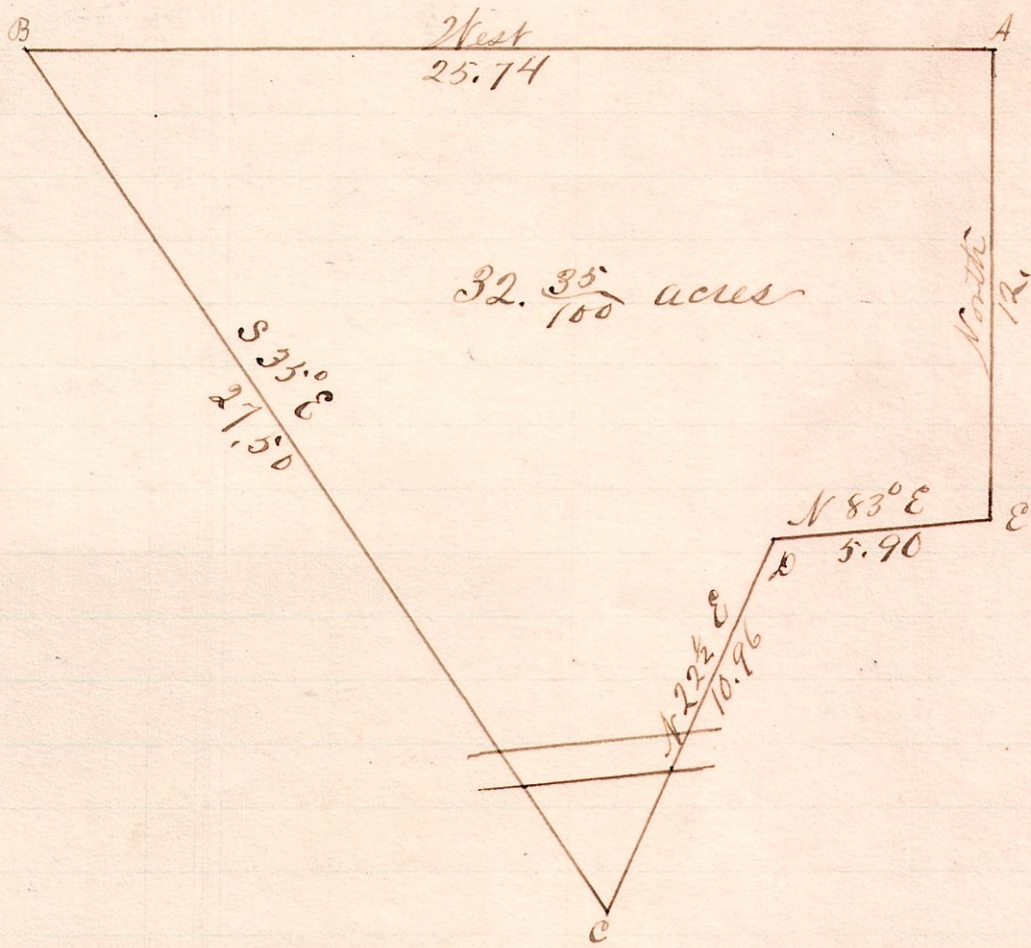
I certify the above to be a correct plat of said land.
 May 18, 1886.

W. J. Hanna
 County Surveyor

R. T. S

6 9 15

4.



Variation 1 1/2°

A survey made for Alfred Peterson to determine the lines AB and BC of the above plat.

May 19, 1886

W. J. Hanna
 County Surveyor