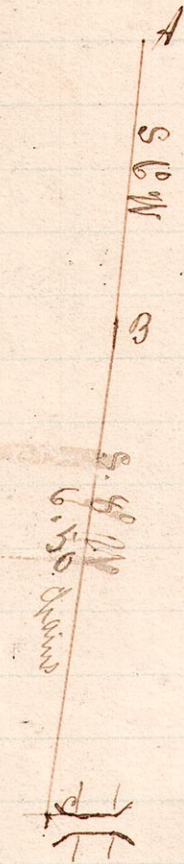


No. 14.

R 7 Sec  
7 9 12



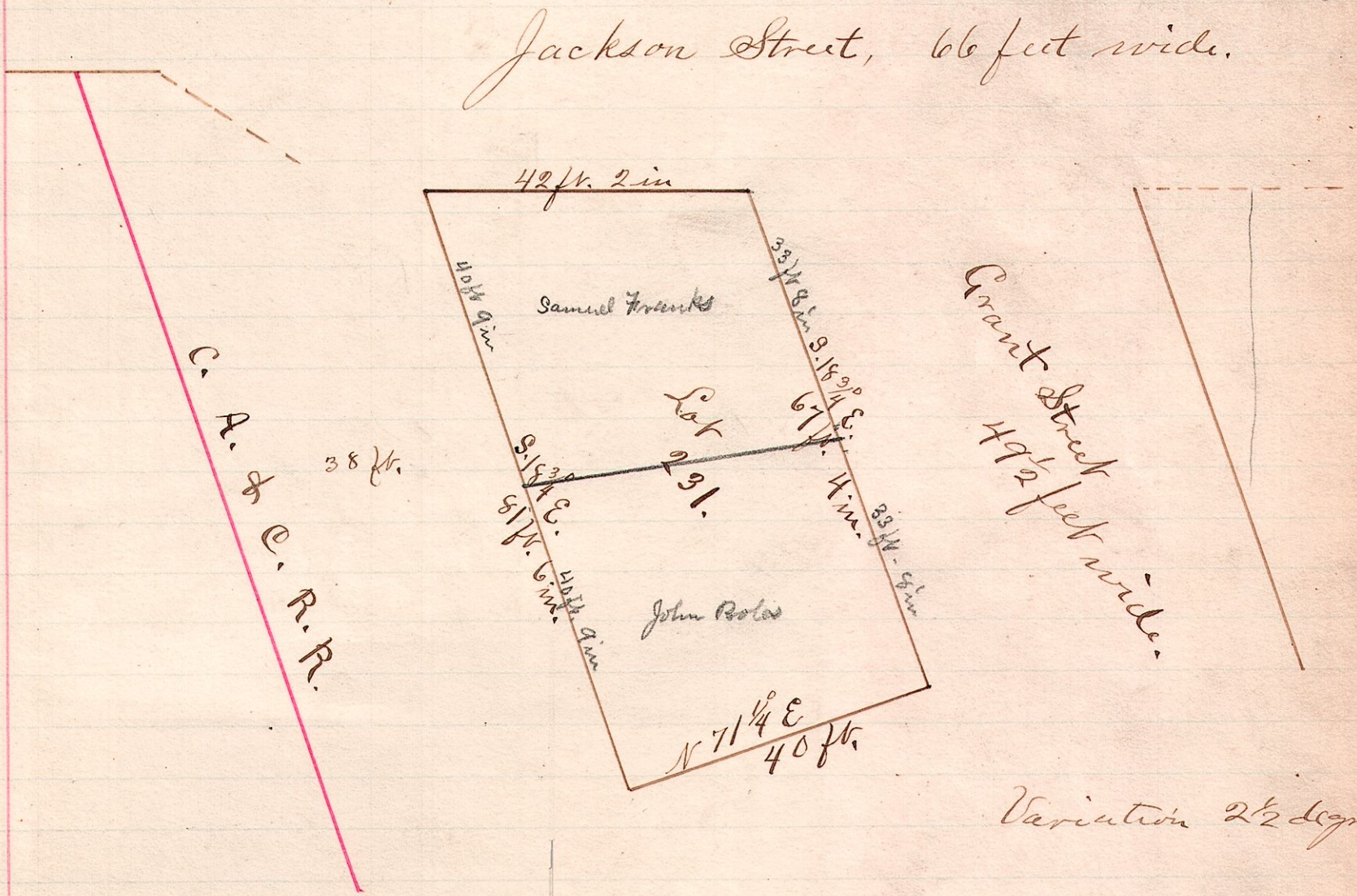
Beginning at the south west corner of section 12; thence north 23.47 chains; thence S 88° E 13.25 chains to point A. B is a willow tree on line. C is a point in the middle of the public road leading west from Millersburg and 27 links west of the first pier of the bridge across the tail race.

Surveyed the above for Mrs. Henrietta Fehlenbach, Aug. 20, 1886.

W. S. Hanna  
County Surveyor.

No. 15.

R. 7.  
7 9



The above is a correct plat of Lot No. 231 in village of Millersburg, as surveyed for Boles & Franks, Sept 2, 1886.

W. S. Hanna  
County Surveyor.