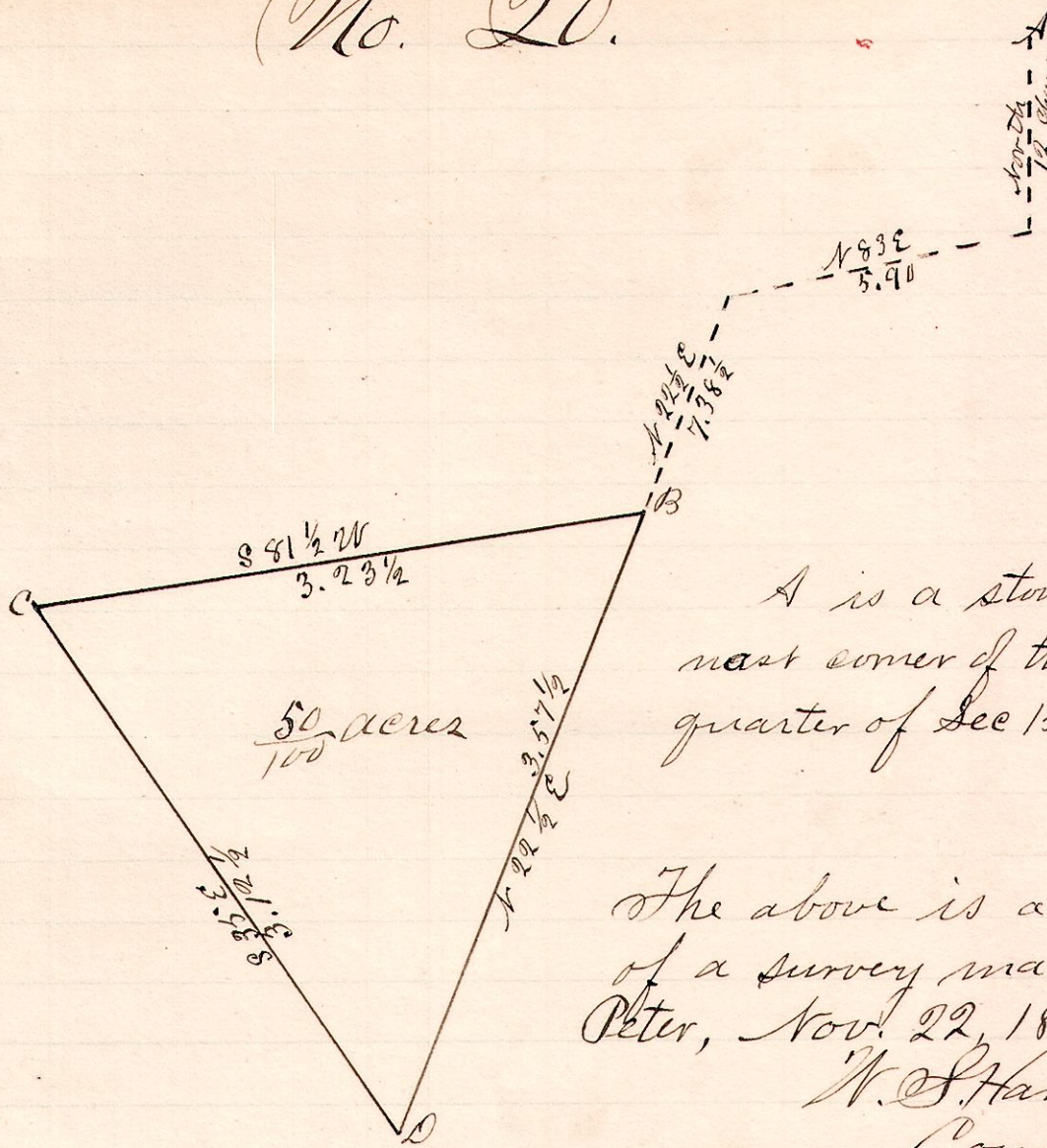


No. 20.

R 7 S
6 9 15



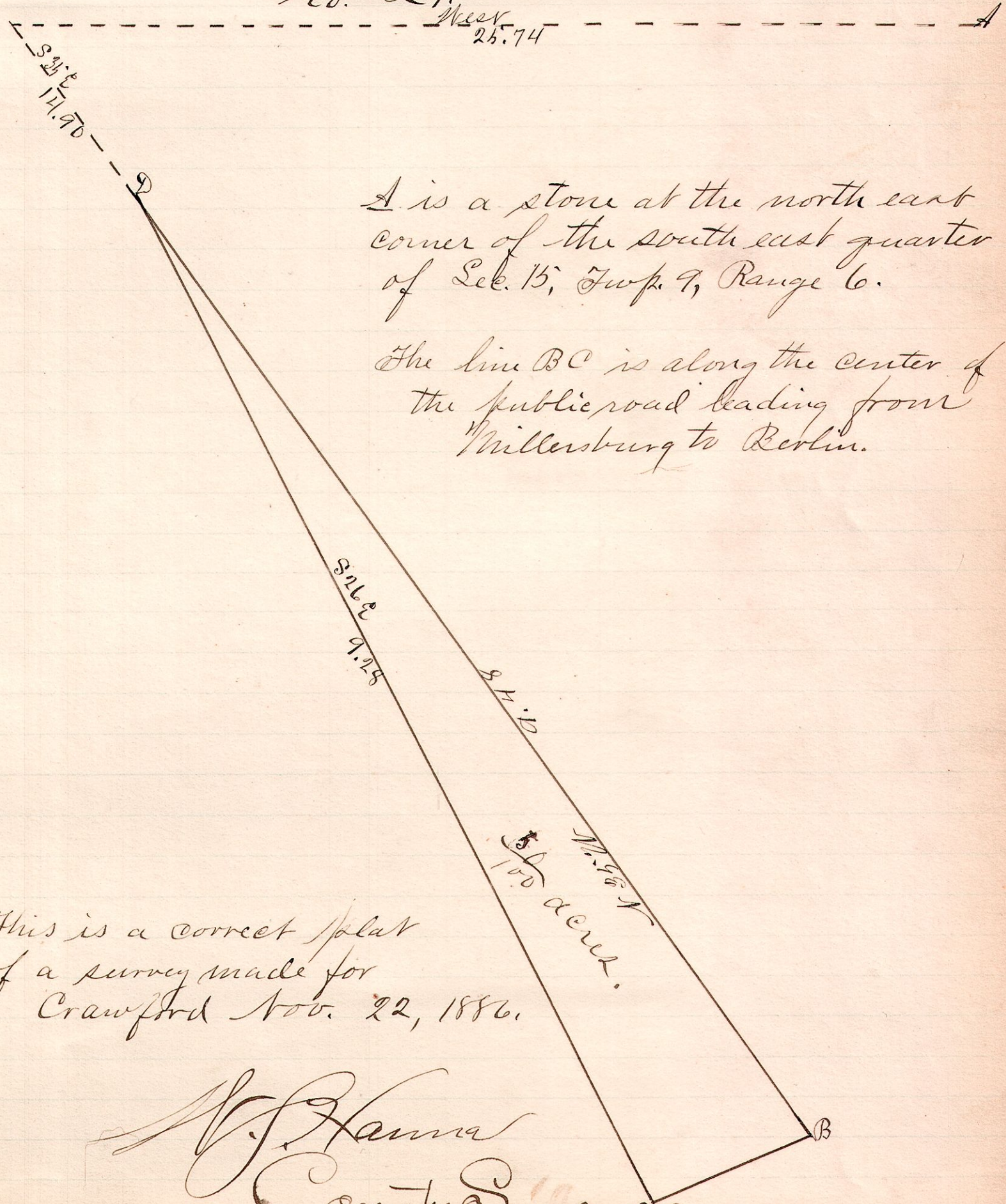
A is a stone at the north east corner of the south east quarter of Sec 15, Twp. 9, R. 6

The above is a correct plat of a survey made for Alfred Peter, Nov. 22, 1886.

W. S. Hanna,
County Surveyor.

No. 21

R. 7. S.
6 9 15



A is a stone at the north east corner of the south east quarter of Sec. 15, Twp. 9, Range 6.

The line BC is along the center of the public road leading from Millersburg to Berlin.

This is a correct plat of a survey made for Crawford Nov. 22, 1886.

W. S. Hanna
County Surveyor.