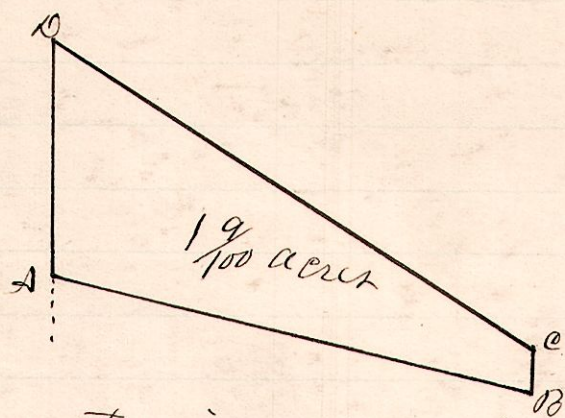


No. 44

R 7 27 lot
6 10 4 18



A S 76 E. 6.50 to B
 B North .50 to C
 C Northwesterly direction along
 the center of a public road
 7.62 1/2 to D
 D South 3.00 to A.

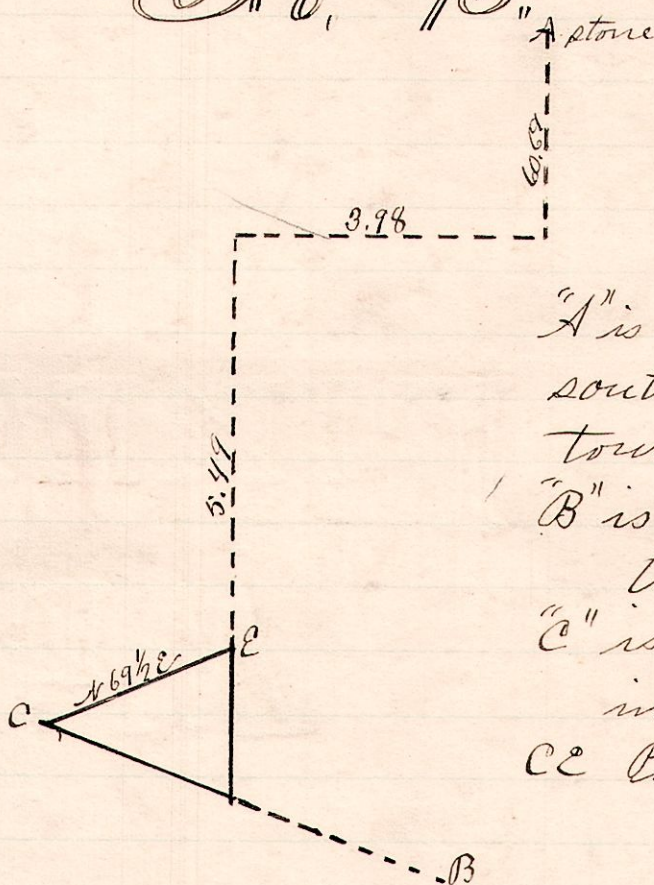
A is a stone in a swamp.
 B is near a maple tree

A survey made for Sample Painter March 21, 1887

W. S. Hanna,
 County Surveyor

No. 45

R 8 3 2r
15 26 26 32



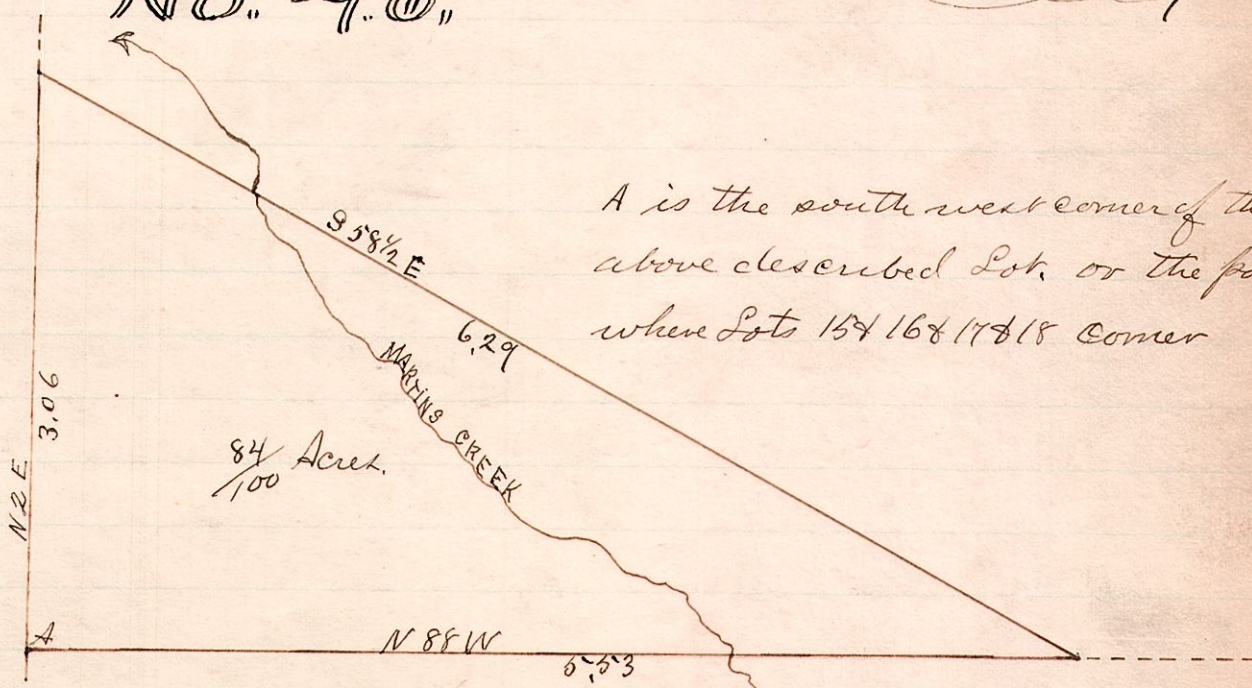
"A" is the north-east corner of the
 south east quarter of Sec. 26,
 Township 20, range 15
 "B" is station 16 on plat No 10 in
 this record
 "C" is station 17 on plat No 10.
 in this record.
 CE Public road.

A survey made for David Collier April 5, 1887

W. S. Hanna
 County Surveyor

No. 46

R 7 27 lot
6 10 4 15



A is the south west corner of the
 above described Lot, or the part
 when Lots 15, 16, 17 & 18 corner

A survey made for Edith Courtwright April 20, 1887

W. S. Hanna,
 County Surveyor