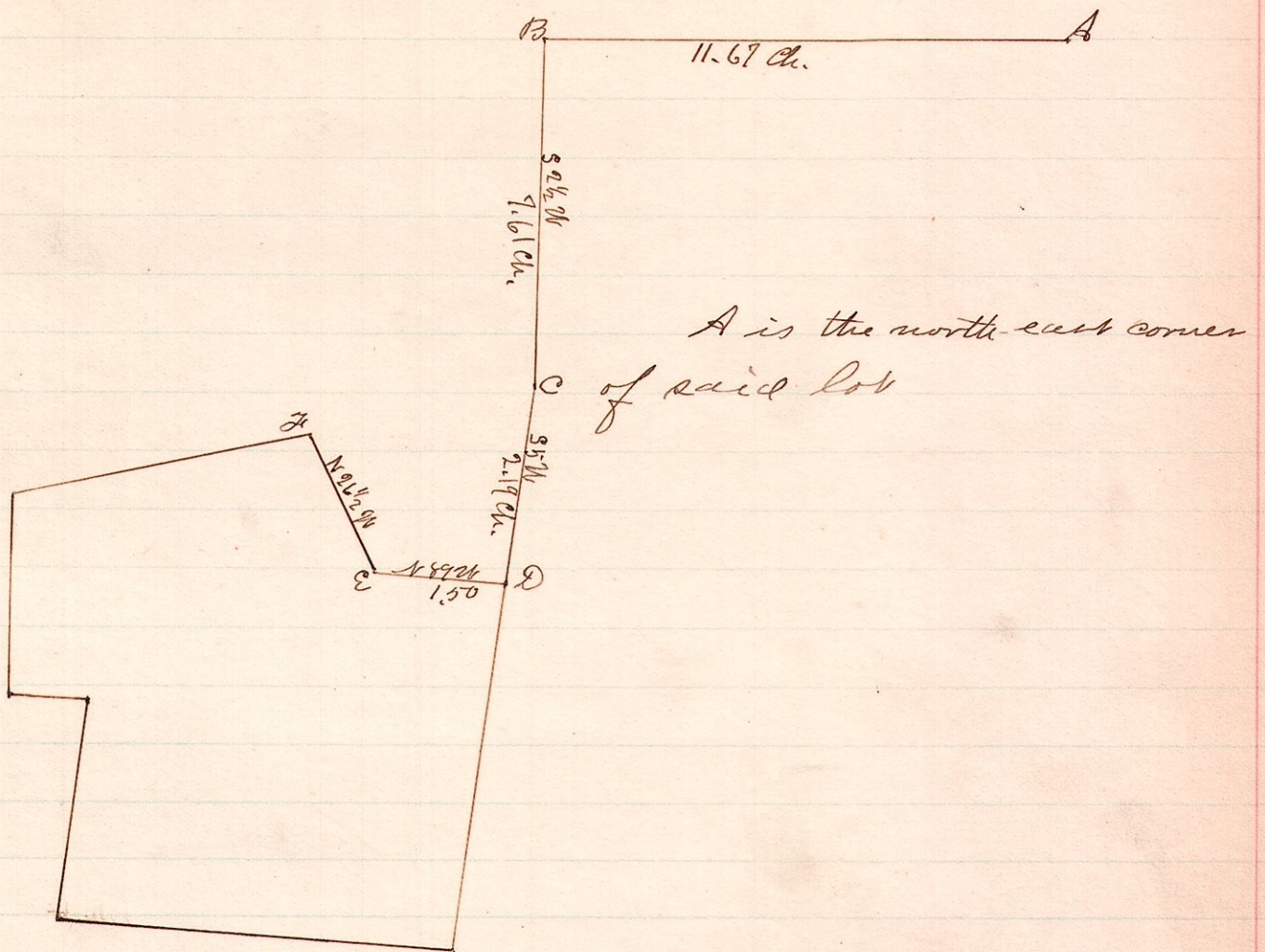


No. 60.

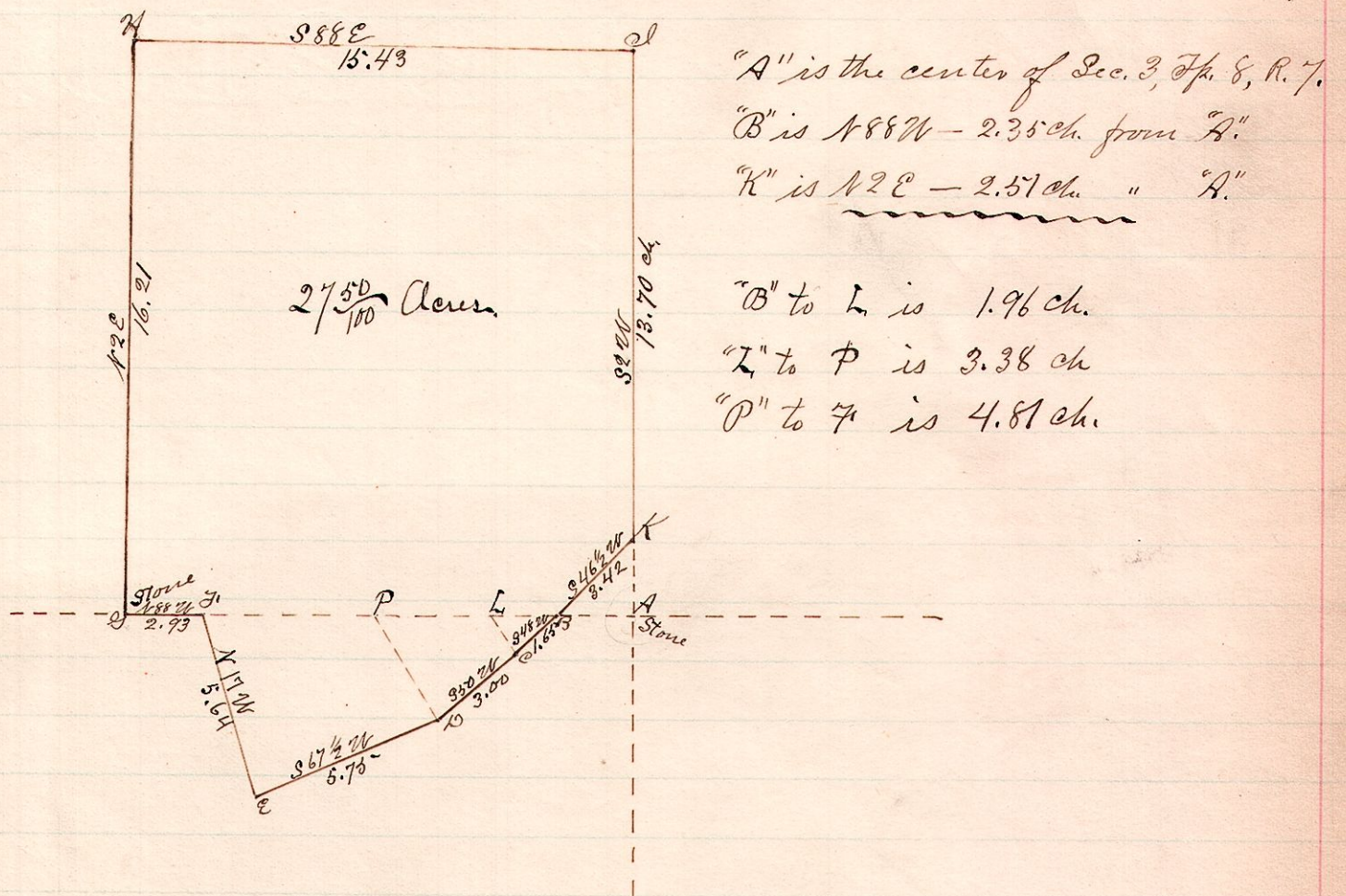
R 7 2d Lot
5 9 lot 1



A survey made for W. B. Mullet March 23, 1887.
W. S. Hanna
County Surveyor.

No. 61.

R. Top. Sec. 2d.
7 8 3 3 1/2



The above is a correct ^{plot} of a part of the estate which was petitioned for Partition by Anna Ling et al, appraised but not partitioned.

March 10, 1887
Arch Uhl } Partitioners
W. P. Waltman }
W. S. Hanna }

W. S. Hanna
Surveyor