

No. 68.

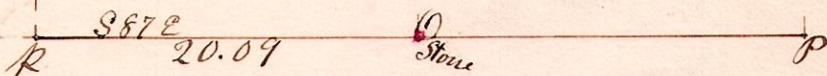
R 7 Sec 25  
9 8 25 82  
Twp Co  
Haines Co.  
Coshocton Co.

"A" is a disputed corner.

Bearing trees to O  
Hickory 6 - S19 1/2 W - 16  
B. Oak 5 - N 8 E - 10

1 Bearing tree the Gum found at P.

1 Bearing tree - the Chestnut found at R.

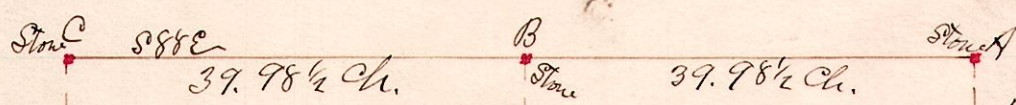


A survey made for the purpose of establishing the south line of the south east quarter of Section 25, Township 8, Range 9.

W. S. Hanna,  
County Surveyor

No. 69.

R Twp Sec 34  
13 14 34 Line



Maple stump found at C  
N 61 E - 6 links

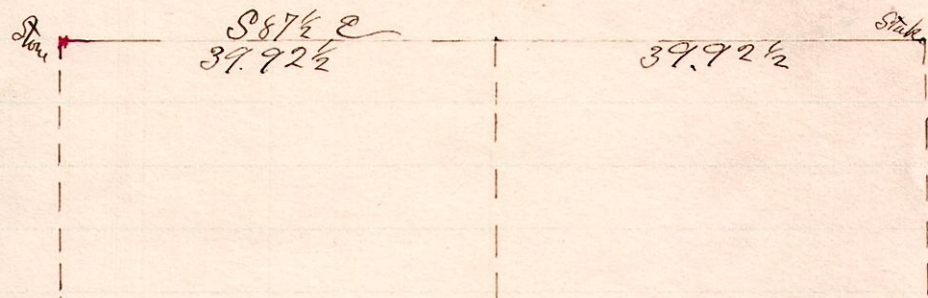
Witness tree, White Oak, S 42 W - 49 links to A

A survey made to establish the north line of Sec 34, Twp. 14, Range 13. and to plant a stone at B. making an equal divide of the north quarter of said section  
Sept. 13, 1887.

W. S. Hanna  
County Surveyor

No. 70.

R Twp Sec  
13 14 27



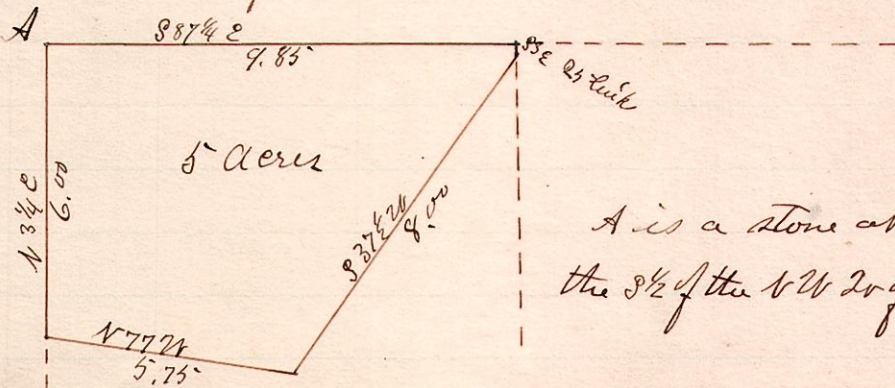
Bearing tree, the Hickory N 43 E - 23 links found; ax marks on each side of the tree

A survey made to determine the north line of Sec 27, Twp 14, Range 13.  
Sept. 14, 1887.

W. S. Hanna  
County Surveyor

No 71

R Twp Sec 2r Q2r R4  
5 9 7 NW S 1/2 NW.



A is a stone at the N.W. Corner of the S 1/2 of the NW 2r of Sec 7, Twp 9, Range 5

A survey made for Louisa Hitzer Sept. 27, 1887.

W. S. Hanna  
County Surveyor