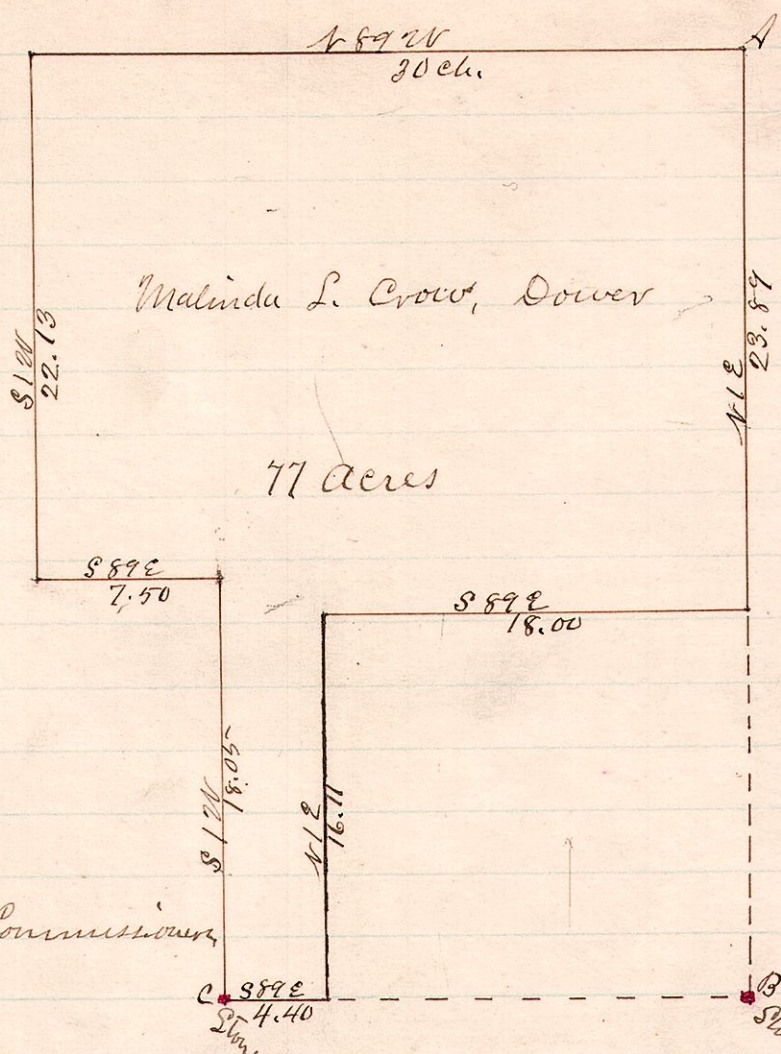


No. 88.

R 7<sup>th</sup> Sec 2<sup>nd</sup>  
11 14 6 1<sup>st</sup>E



Malinda L. Crow, Dower

77 Acres

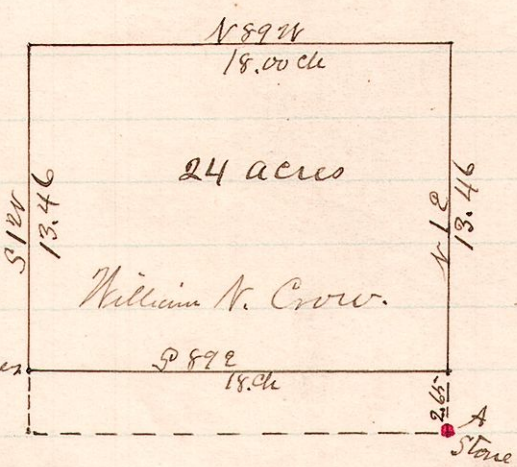
"A" is a stone at the N.E. corner of Sec 6.  
"B" is a corner at the S.E. cor of the N.E. 2<sup>nd</sup> of Sec 6.

Henry F. Pounds }  
Eros Thornberg } Commissioners  
W.S. Hanna }

The above is a correct plat of a survey made by order of the Court of Common Pleas for the purpose of setting off dower to Malinda Crow and partitioning the balance of the estate among the legal heirs.  
June 10, 1887. W.S. Hanna  
County Surveyor

No. 89.

R 7<sup>th</sup> Sec 2<sup>nd</sup>  
11 14 6 1<sup>st</sup>E



William N. Crow.

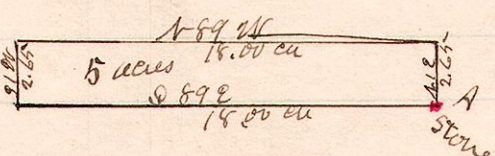
A is the S.E. cor of the N.E. 2<sup>nd</sup> of Sec 6.

Parker }  
Fred Knopp } Commissioners  
W.S. Hanna }

A survey made by order of Common Pleas Court to partition the Crow estate, whereby the above described portion was allotted to W<sup>m</sup> N. Crow.  
August 3<sup>rd</sup> 4, 1887. W.S. Hanna  
County Surveyor.

No. 90.

R 7<sup>th</sup> Sec 2<sup>nd</sup>  
11 14 6 1<sup>st</sup>E



A is the S.E. cor of the N.E. 2<sup>nd</sup> of Sec 6.

Parker }  
Fred Knopp } Com.  
W.S. Hanna }

A survey made by order of Common Pleas Court in Partition whereby the above portion of the Crow estate was allotted to Nora M. Crow  
Aug. 3<sup>rd</sup> 4, 1887. W.S. Hanna  
County Surveyor.