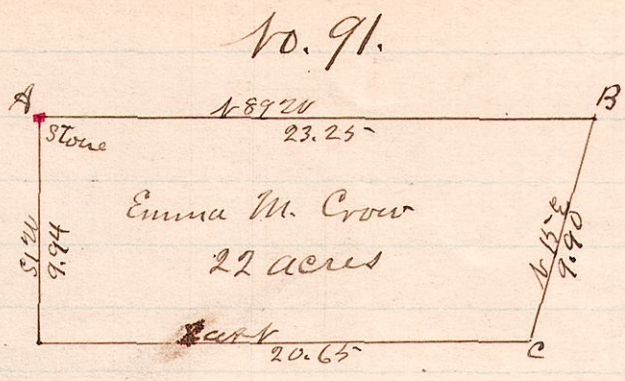


R 7/2 Sec 2r  
11 14 5 SW

Parker }  
Knopp } Com.  
Hanna }

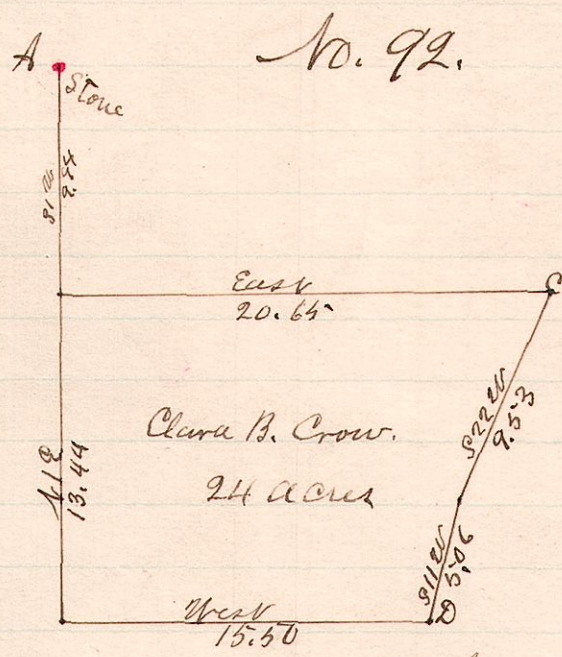


B to C is center of public road.  
A is the N.W. corner of the S.W. 2r of fractional Sec. 5.

A survey made by order of Common Pleas Court in Partition,  
Aug 3 & 4, 1887.  
W.S. Hanna  
County Surveyor.

R 7/2 Sec 2r  
11 14 5 SW

Parker }  
Knopp } Com.  
Hanna }

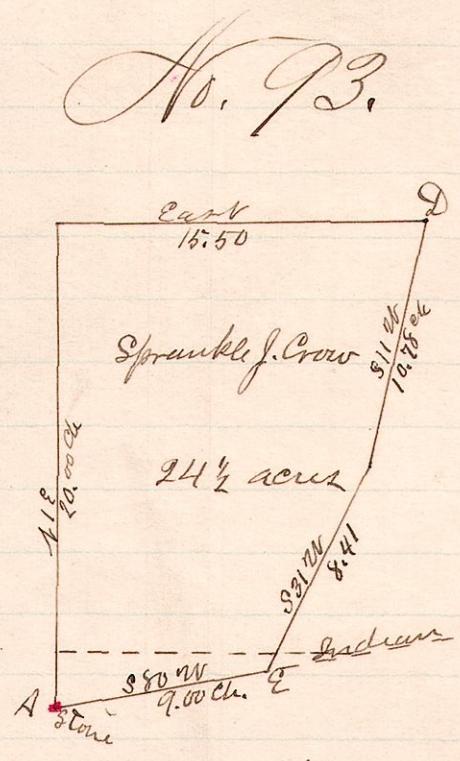


C to D is center of public road.  
A is the N.W. cor of the S.W. 2r of fractional sec 5

A survey made by order of Common Pleas Court in Partition,  
Aug. 3 & 4 1887.  
W.S. Hanna  
County Surveyor.

R 7/2 Secs 2r  
11 14 5 1/2 SW  
8 N.W.

Parker }  
Knopp } Com.  
Hanna }

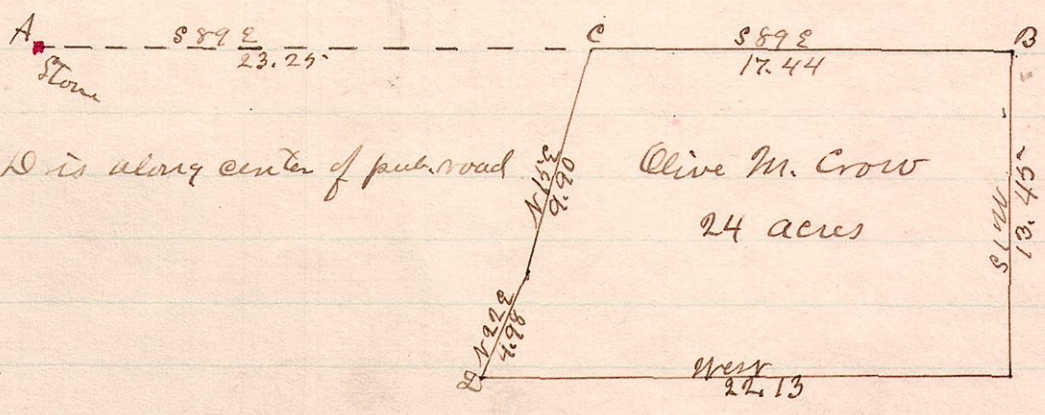


D to E is along the center of public road.  
A is a stone at the S.W. corner of fractional Sec 8, and on the Indian Boundary Line  
This plat contains nearly all of Fractional Sec 8, and part of fractional Sec 5

A survey made by order of Common Pleas Court in Partition  
Aug. 3 & 4, 1887  
W.S. Hanna  
County Surveyor

R 7/2 Sec 2r Pt  
11 14 5 SW N.E.

Parker }  
Knopp } Com.  
Hanna }



A is the N.W. cor of the S.W. 2r of Fraction Sec 5;  
B is the N.E. cor of same 2r Sec.

A survey made by order of Com. Pleas Court in Partition  
Aug 3 & 4, 1887  
W.S. Hanna  
County Surveyor