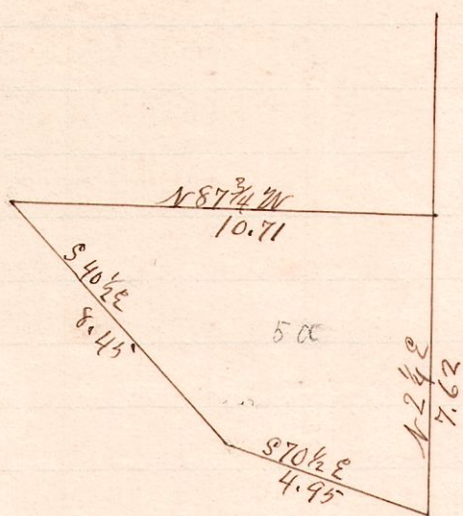


No. 101.

R 7p Sec 2, Sec 2p
7 8 4 S.E. 1/4 pt of
N.E. 1/4

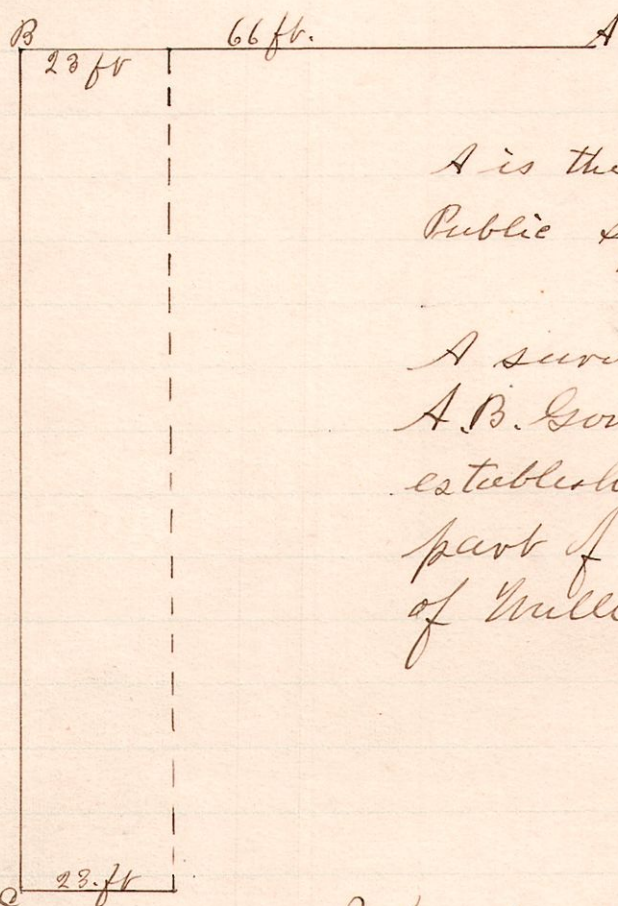


I hereby certify the above to be a correct copy of a survey made for Theo. Harter by W.C. Reed, March 12, 1886

W.S. Hanna
County Surveyor

No. 102.

R 7p Sec Village Lot
7 9 12 to 110



A is the corner stone at N.W. corner of Public Square.

A survey made by W.C. Reed for A.B. Gousser for the purpose of establishing the line B.C. in the east part of Lot No. 110 in the village of Mullensburg on March 25, 1886

I hereby certify the above to be a correct plat of the above survey

W.S. Hanna
County Surveyor

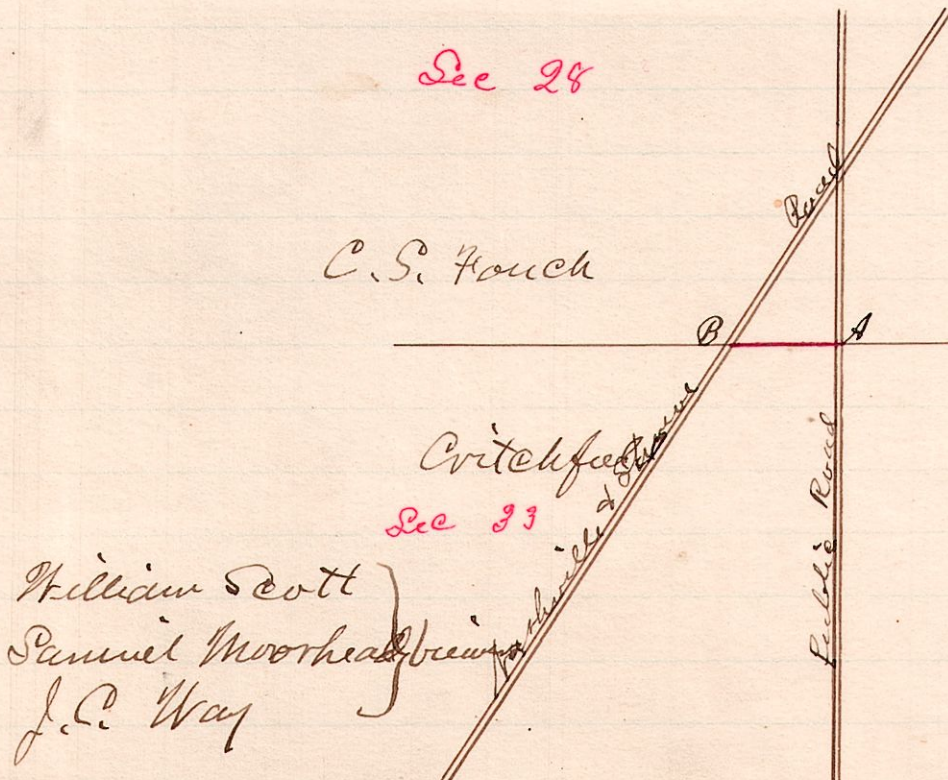
No. 103

R 7
14 18

Sec 28
C.S. Fouch

Sec 27

A is the Section Corner
A B line of proposed Off Road
and is 7.50 chains.



Surveyed the above Off Road Dec 20, 1887.

W.S. Hanna
County Surveyor