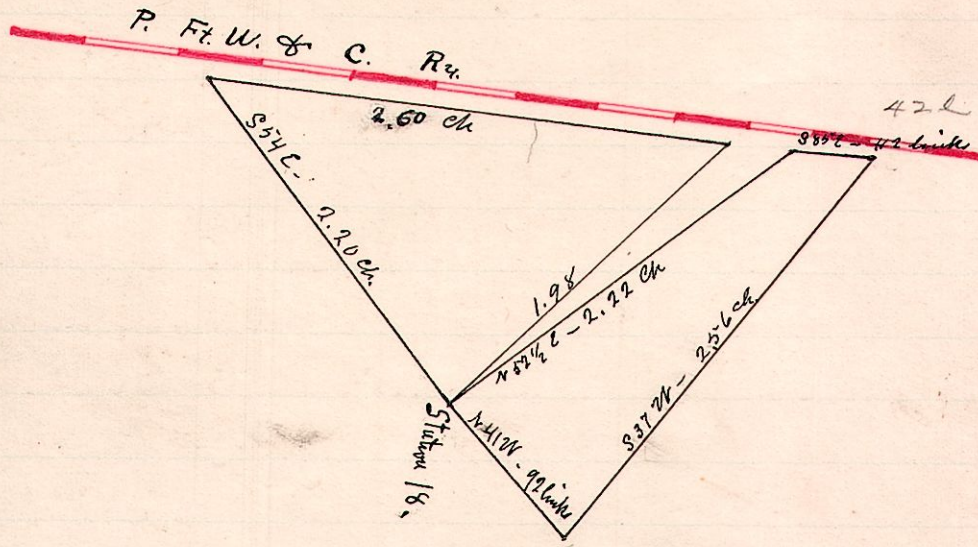


No. 116

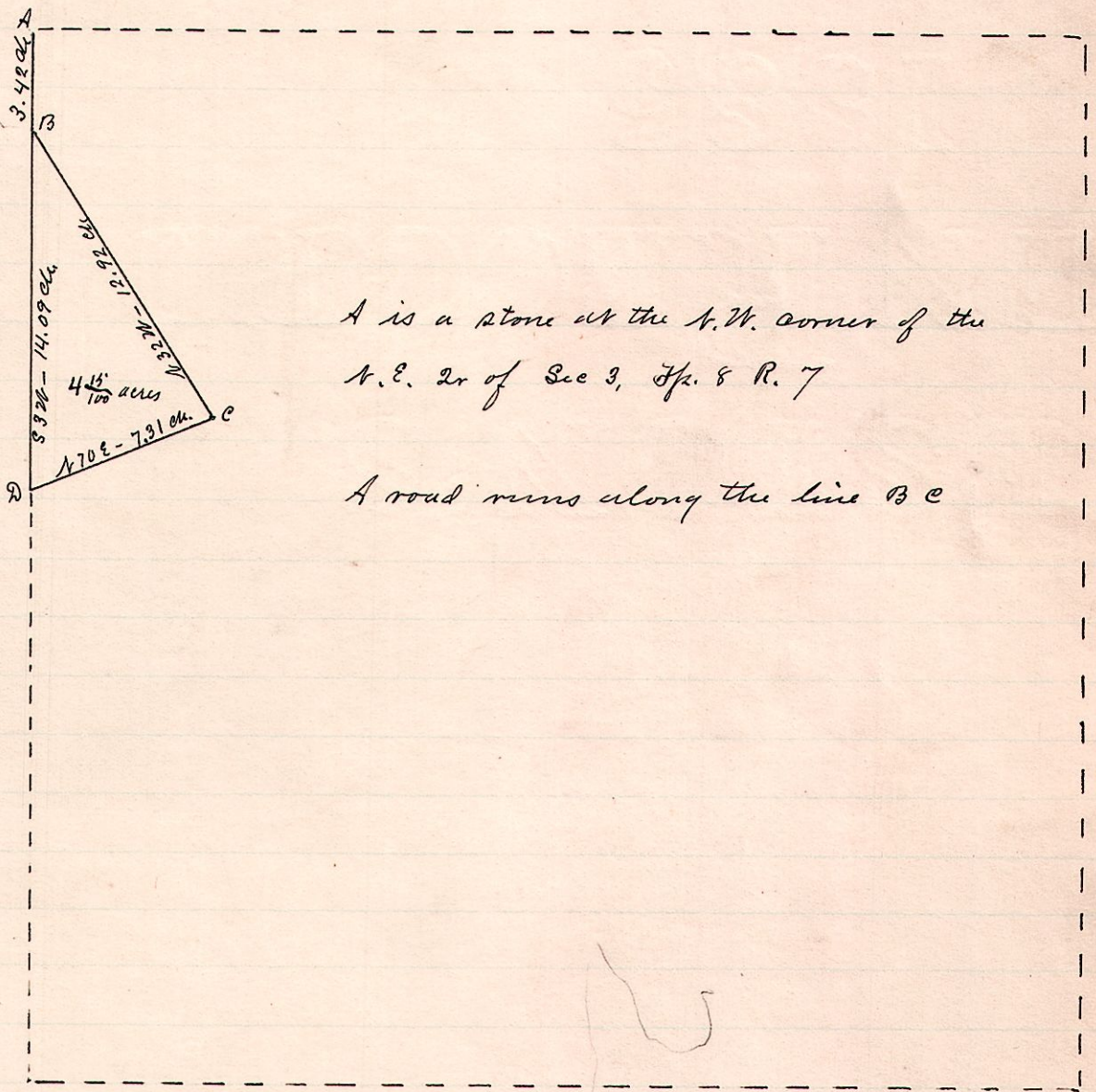
R 7th Sec
15 20 26



Surveyed the above for George Goll Feb. 27, 1888
W. S. Hanna
County Surveyor

No. 117

R 7th Sec 2nd
7 8 3 N.E.



A is a stone at the N.W. corner of the
N.E. 2nd of Sec 3, T⁷. 8 R. 7
A road runs along the line B C

Surveyed for D. K. Sharp, March 19, 1888.
W. S. Hanna
County Surveyor