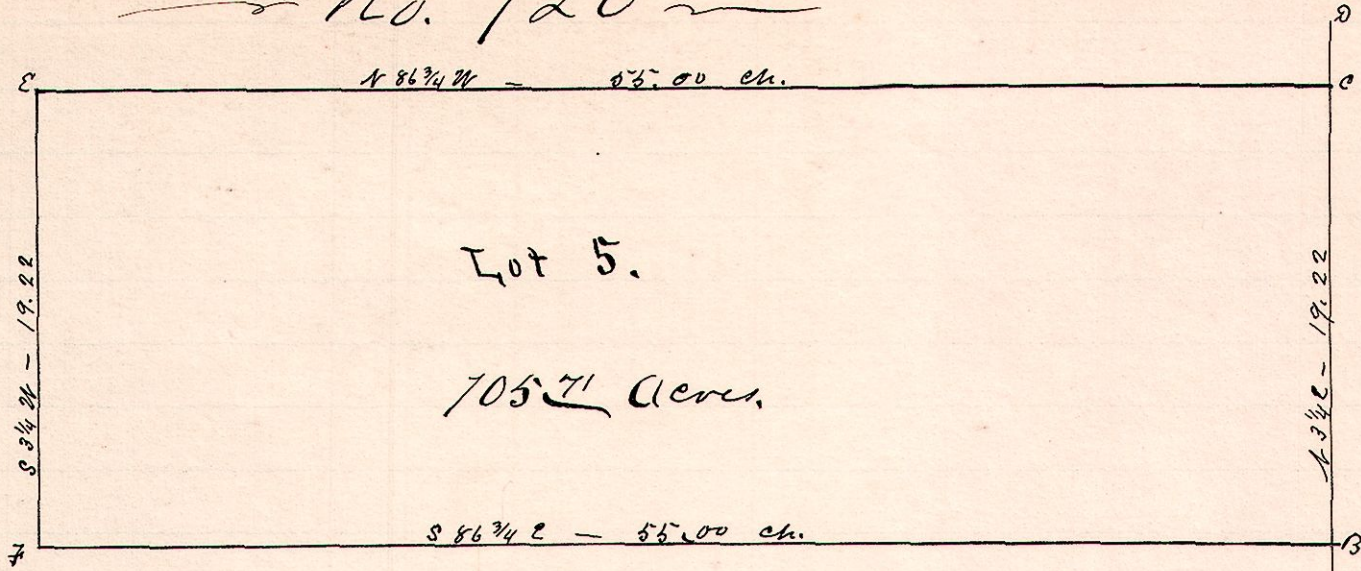


No. 120

R Tp 27p Lot  
9 9 40 5



Began at a stone at A the S.E. Cor. of Lot 2, where we found Lot 4.  
one original witness, viz. W. Oak - N 5 W - 14 links and run the line  
north to the N.E. cor. of Lot 7, where we found stump of original Lot 3.  
witness, the Ash, badly decayed, but young sprouts growing from  
its base. Determined the corners B & C from these two points  
and run the lines CE, EF, & FB.

Took the following witnesses:

- C Chestnut 9 - West 23<sup>rd</sup> of Hickory 13 - N 20 E - 31 links.
- E Ash 10 - N 70 E - 15<sup>th</sup> of Butternut 10 - S 49 1/2 E - 27 links.
- The above corner, E, is in a ravine among rocks.
- F R. Oak 9 - S 81 W - 26<sup>th</sup> of Ash 10 - S 70 E - 35 links.

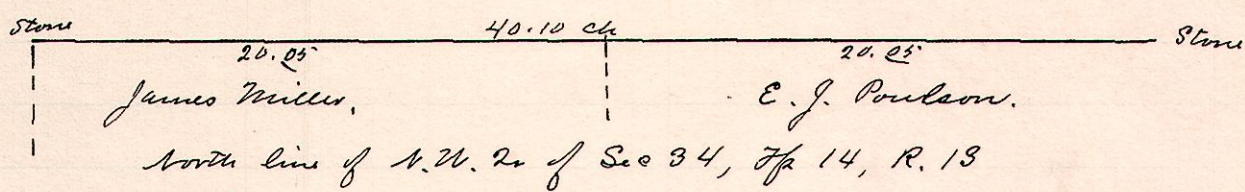
R. H. Snow }  
William Bell } Chairmen, Sworn.

Surveyed for Ceron Kline, April 4, 1888.

W. S. Hanna  
County Surveyor

No. 121

R Tp Sec 20 S. Pt.  
13 14 34 4 W 4 lin

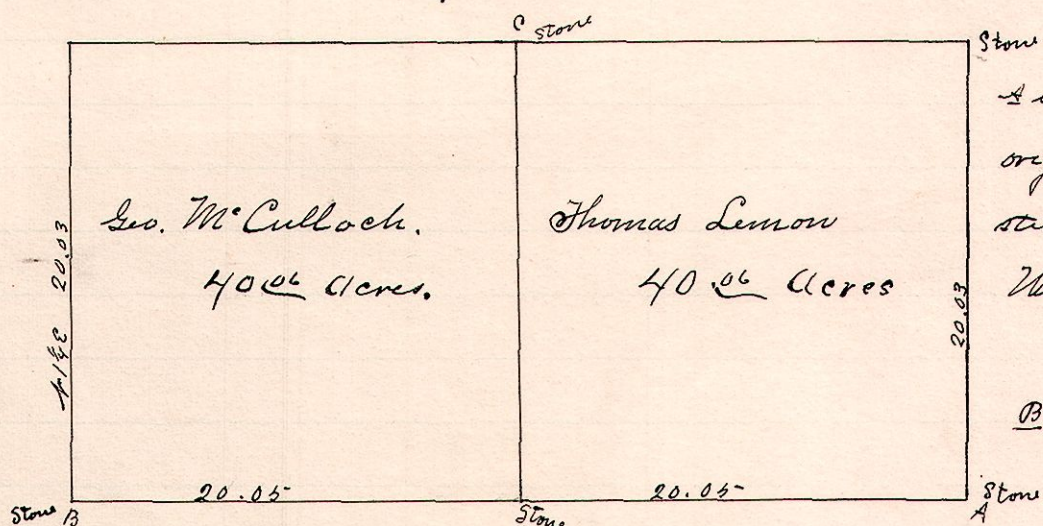


Surveyed for James Miller and Edward J. Poulson, April 11, 1888.

W. S. Hanna,  
County Surveyor,

No. 122

R Tp Sec 20 Pt  
13 14 27 SE S 1/2



A is the S.E. Cor of Sec 27 with  
original witness W Oak S 63 20 - 49  
still standing  
Witness to C.  
Tangle 18, S 30 1/2 E - 30 -  
B is SW cor. of said 20.

Surveyed the above for Geo. McCulloch & Thomas Lemow  
April 11, 1888.

W. S. Hanna  
County Surveyor,