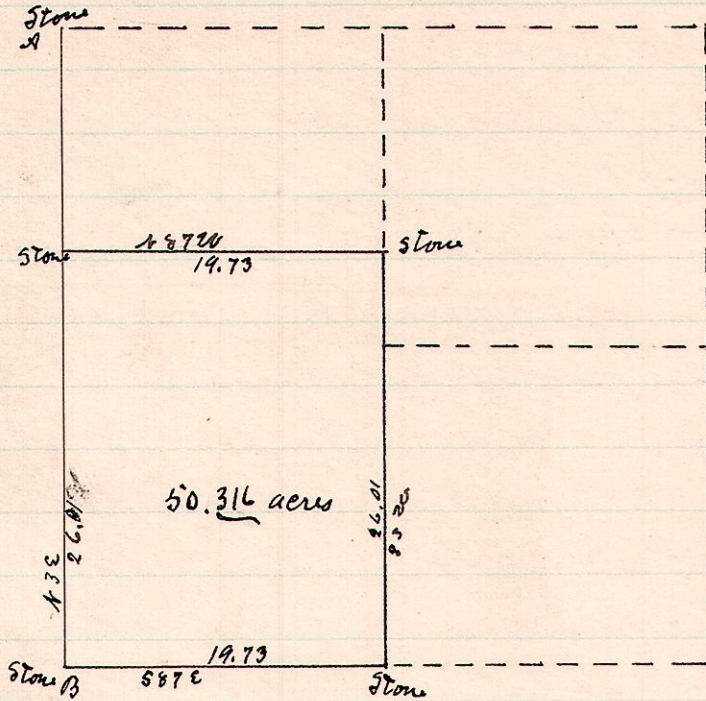


No. 128.

R 7/2 Sec 2r Rr
7 8 2 SE SW



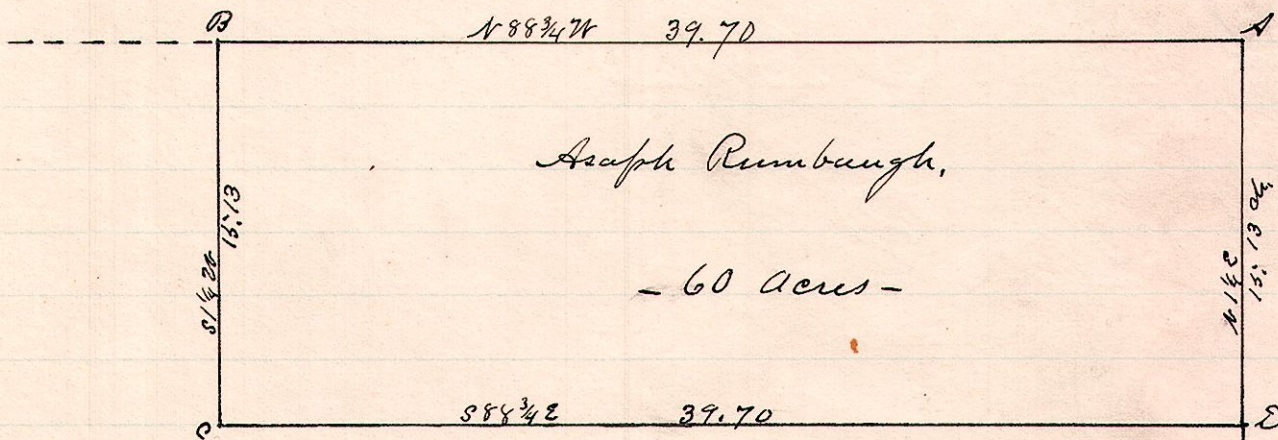
A is the center of Sec 2.

A survey made for June Grinn cutting off 50.316 acres from the West 1/2 of the S.E. 1/4 of Sec. 2. May 4, 1888

W. S. Hanna
County Surveyor.

No. 129.

R 7/2 Sec 2r Rr
13 14 27 NE 1/4



Asaph Rumbaugh,

- 60 acres -

The line AB is the line between Holmes and Wayne Counties.

A is the N.E. Corner of Sec. 27, Tp 14, R 13, with the following witnesses: Original witness - Hickory - N 45 E - 23 standing, and took the following new witnesses to A. Chestnut 20 - S 26 1/4 E - 15 1/2 and B Oak 7 - N 39 W - 7 and R Oak 19 - N 69 1/2 W - 57 1/2. Planted stones at B, C, & D and took the following witnesses to D. W. Oak 18 - N 73 3/4 W - 25 3/4 and Chestnut 13 - S 49 E - 20 1/2 and W Oak 16 - S 10 1/2 E - 37.

Surveyed the above for Asaph Rumbaugh and Samuel J. Cutter, May 8, 1888

W. S. Hanna,
County Surveyor.