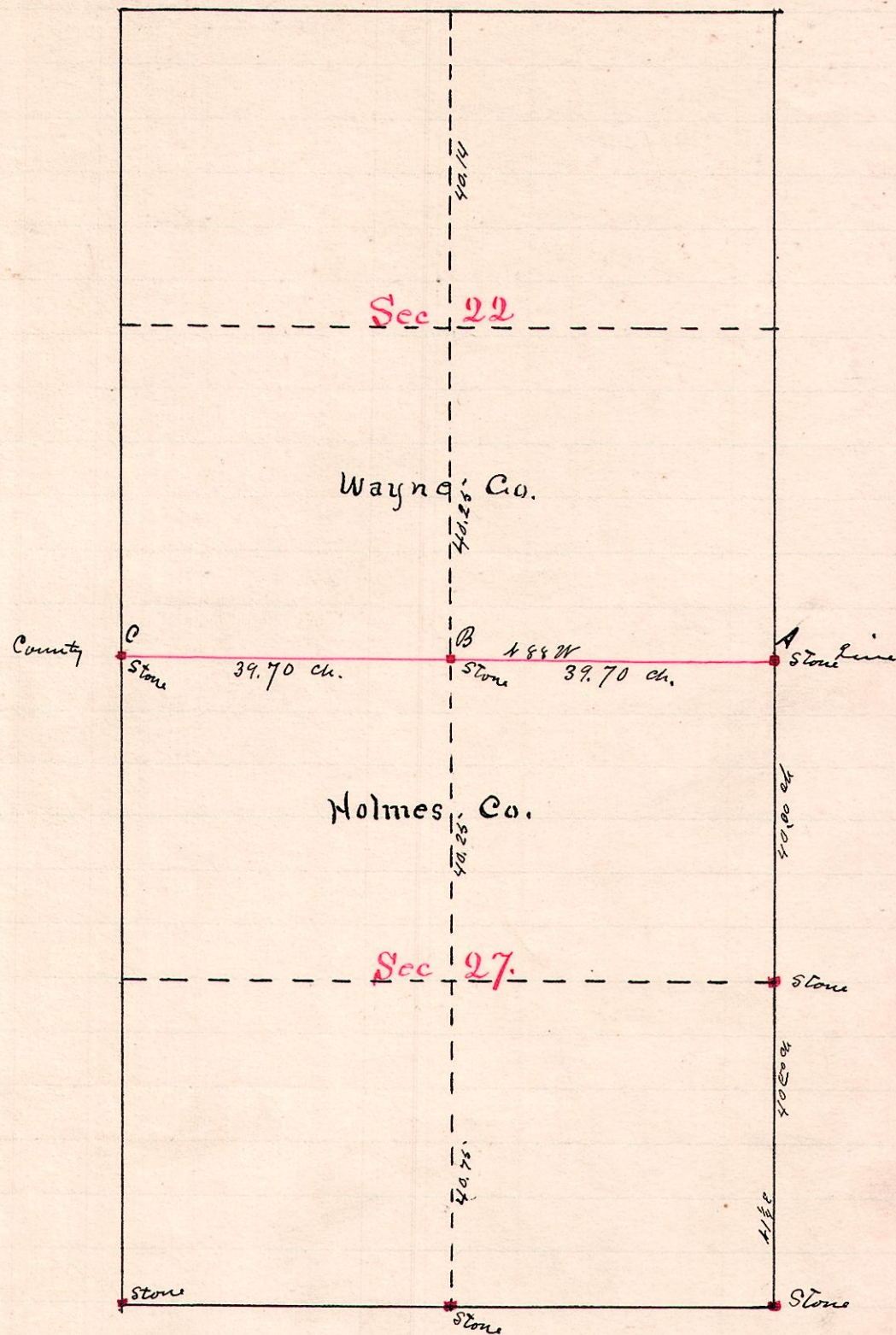


No. 130

R 7th Sec 24
13 14 27 Holmes



We found the original Hickory - 443E-23 at A and set a stone therefrom and took the following additional witnesses thereto:
Chestnut 20 - S 22 1/2 E - 15 1/2 & B Oak 7 - 439 W - 7 & R Oak 19 - N 69 1/2 W - 57 2/3

We run a random line west from A to C and corrected the same which gave us the point B. We excavated the earth to the depth of about 6 ft. and came to an log culvert, the bed logs of which, the cross logs and slabs on top were well preserved. After finding the west end of said log culvert which was also supposed to be the location of a stone planted in the year 1840, we failed to find the same, and we then planted a stone according to the usage in like cases.

The following persons were present at the planting of said stone:
Samuel J. Carter, Rev. J. A. Williams, Robert Scott and Asaph Rumbaugh, interested parties, and Elmer Williams, F. W. Lytle, H. M. Carter, S. J. McCarty,

Surveyed by Philip Markley, County Surveyor of Wayne County Ohio and W. S. Hanna County Surveyor of Holmes County Ohio on the 7th and 8th days of May, 1888

W. S. Hanna,
County Surveyor.

See Report on opposite Page.