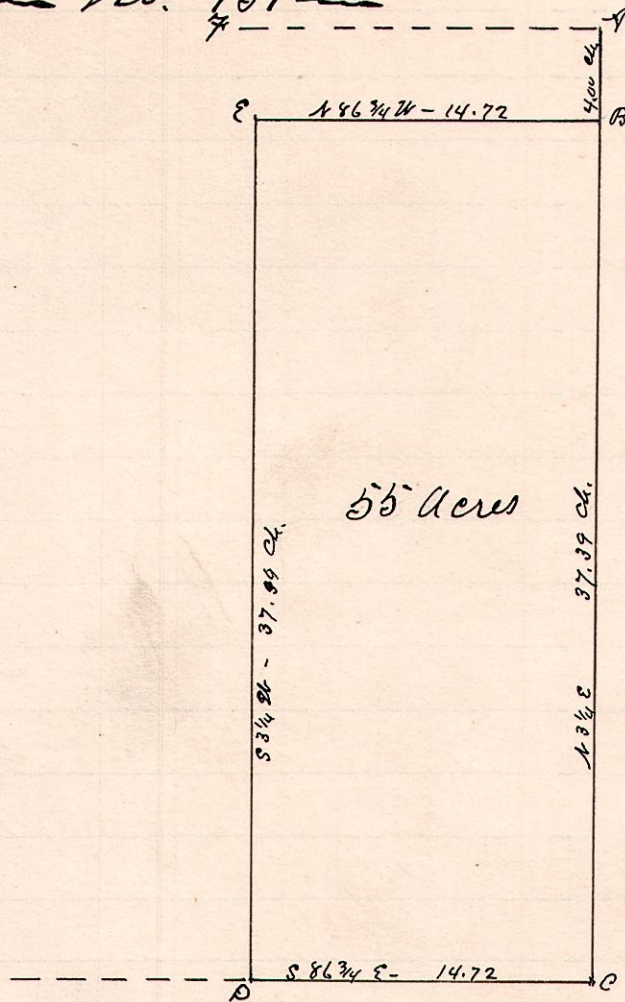


No. 131

R 7p 2p Lot 5
7 9 3d 5' C.P.



A is the N.E. Corner of Lot 5 and is found by an original witness standing S.W. of corner, the same being a Maple, but badly decayed. C is a stone with the original R. Oak N.W. of corner still standing. Planted posts at D & E. A 7 is the 2^d 7p Line. C is the S.E. Corner of Lot 5.

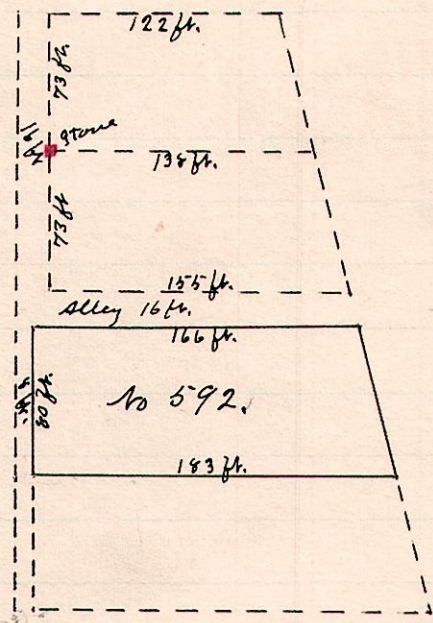
Surveyed the above for J. P. Close, May 24, 1888.

W. S. Hanna,

County Surveyor,

No. 132.

R 7p Sec 20
7 9 19 592



A survey made of Lot 592 in Country's Addition to the Town of Millersburg, Ohio.

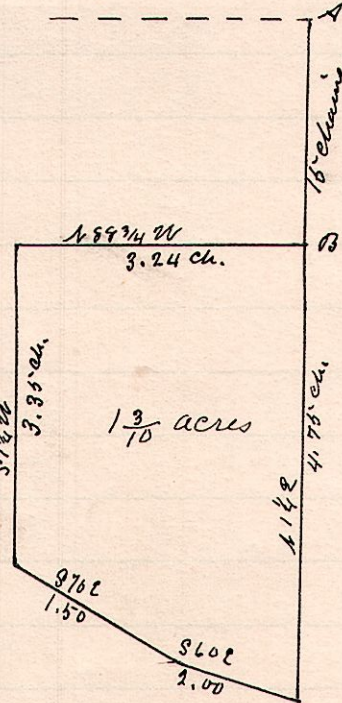
Surveyed the above, May 29, 1888. for A. Cunningham

W. S. Hanna

County Surveyor

No. 133

R 7p Sec 20
12 16 35 N.E.



A is a stone at the N.E. Corner of Sec 35, 7p 15, R 12. B is 15 chains south of A in center of Public Road.

Surveyed the above for the Board of Education of Salt Creek Township, May 31, 1888

W. S. Hanna
County Surveyor