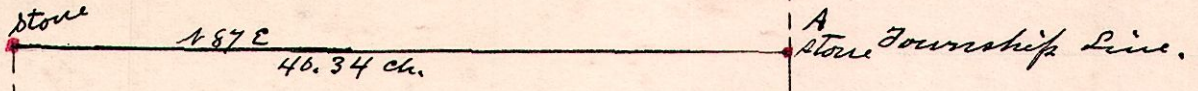


No. 137

R 7/2 Sec 2r
9 8 3 1E



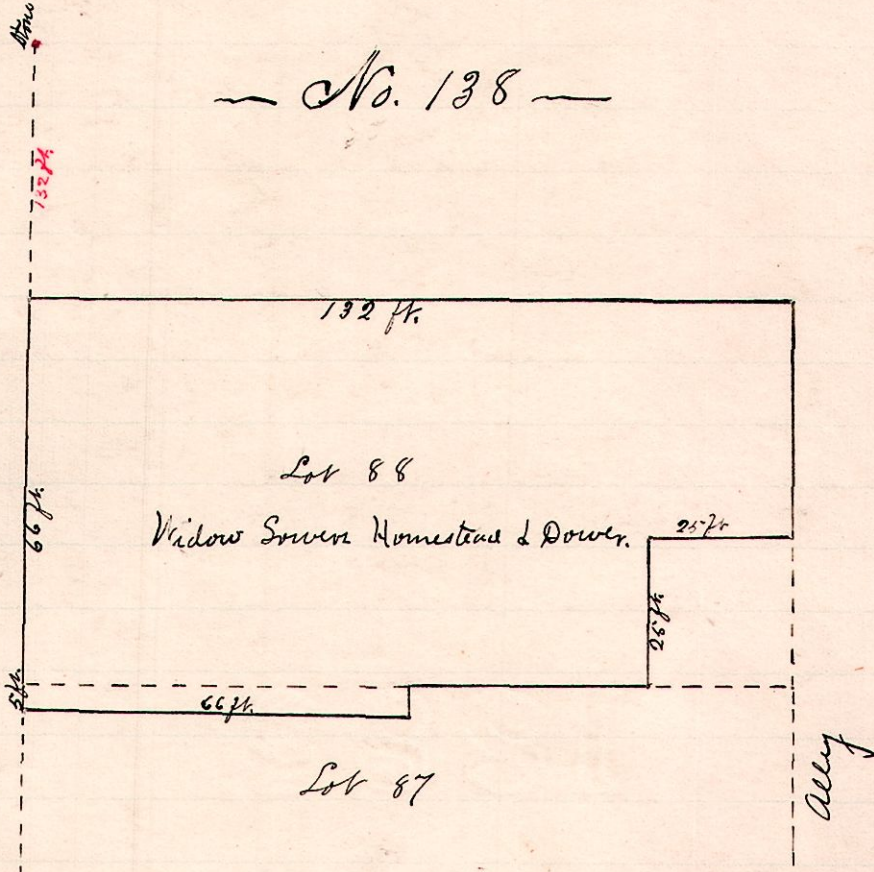
A is the N.E. corner of Sec 3.

Surveyed for the Trustees of Knox and Richland Townships,
June 22, 1888,
W. S. Hanna
County Surveyor

No. 138

R 7/2 Sec 12
7 9 12 88
87

Mad Anthony Str. 49 1/2 ft



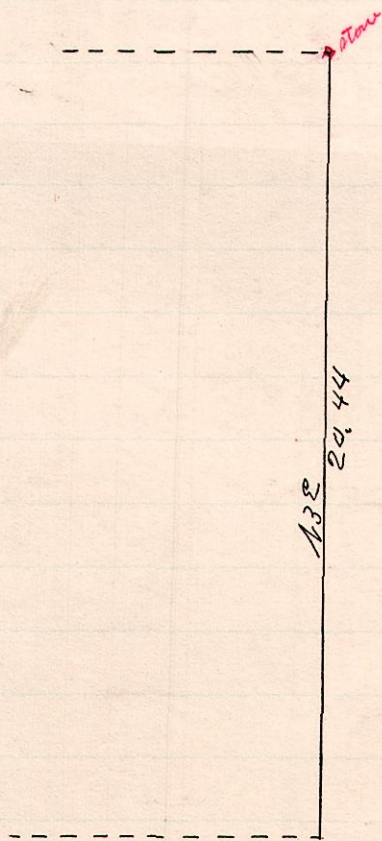
A survey made by order of Probate Court, setting off Homestead & Dower
to the widow of John W. Sween, Eros Moreland, Adm. Part of Lots 87 & 88,

Henry Stenul }
John Koch } Commissioners &
W. S. Hanna } appraisers

Surveyed July 19, 1888
W. S. Hanna,
County Surveyor,

No. 139

R 7/2 Sec 2r
7 8 2 SW



A survey made for John Zoller of the east
line of the S.W. 2r of the S.W. 2r of Sec 2
7/2 8, R 7.

July 19, 1888

W. S. Hanna
County Surveyor