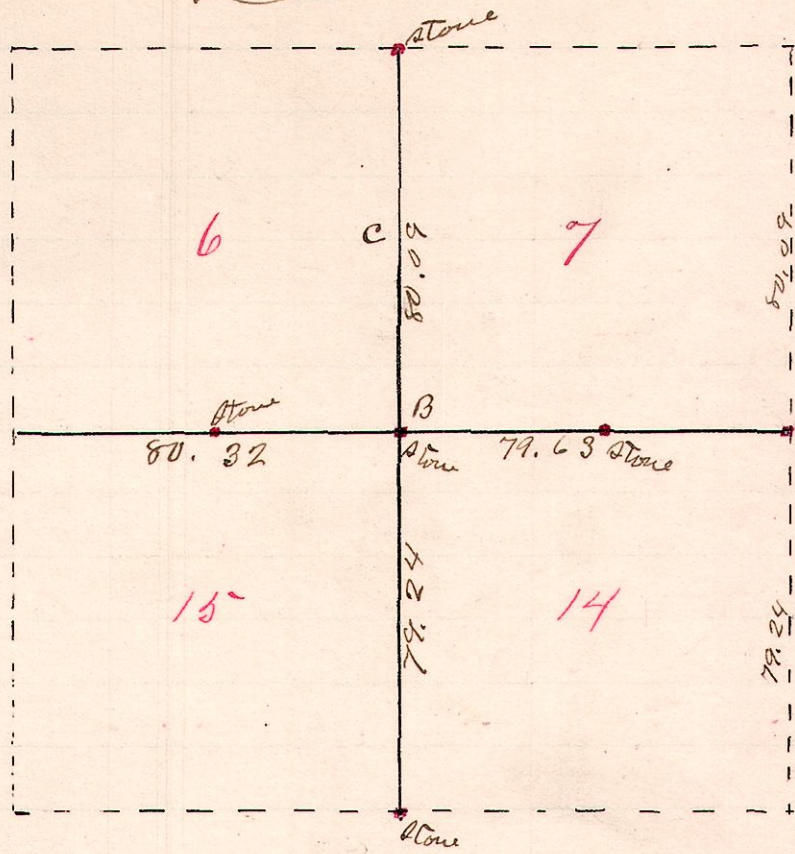


No. 146

R Tp Sec
4 8 67
14 & 15

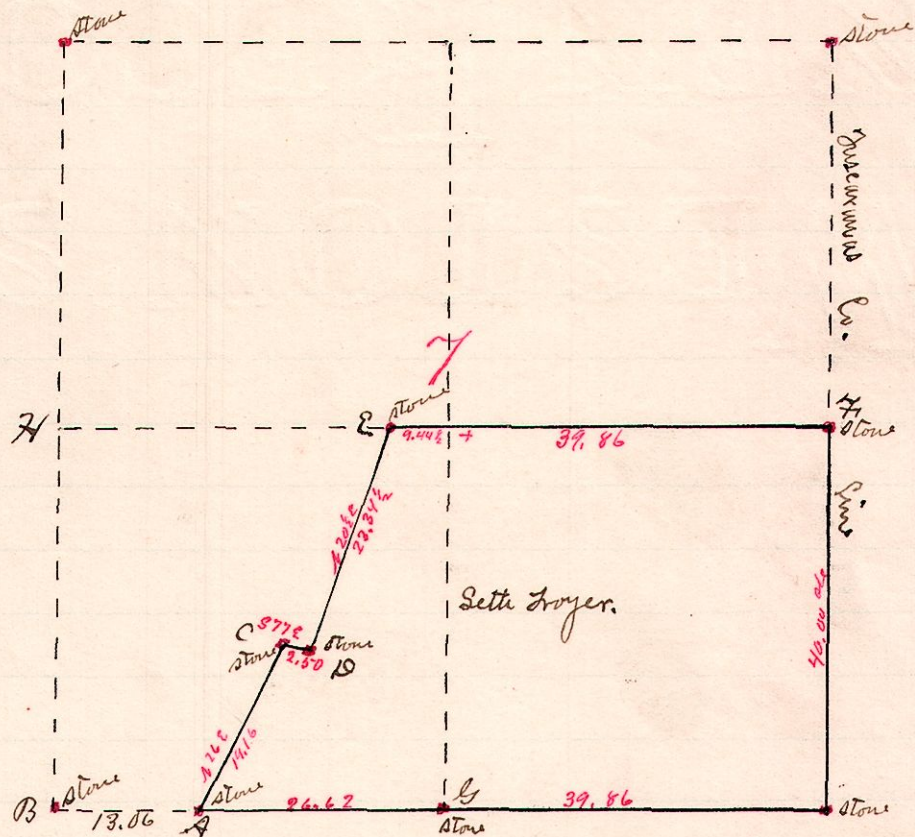


Set stone at B and
A took the following witness:
Stone Hickory 10, S3E - 6 links.
Original witnesses at C
still standing.

A survey made for John Damer and others to establish a
corner of Sections 6, 7, 14, 15 in Tpt 8, Range 4,
Aug 7, 1888
W. S. Hanna
County Surveyor.

No. 147

R Tp Sec 2r
4 8 7 32
34



Variation 3° 15'

Witnesses to "B" Hickory 10 - S3E - 10 } Planted stones at A, B, E, F, & G.
 " " " "A" Chestnut - 24 - S54W - 27. } Witnesses standing at "H" are
 " " " "E" W. Oak - 20 - S37E - 28 } W.D. 10-86E-6 & W.D. 12-482W-35

Chairman: C. J. Hershberger & Henry J. Phutt.
 Flagmen: J. H. Miller & Henry Teglespach.

The stone at "E" was set at the request of the land-owners that join at that point, - being, in fact, a compromise corner, which was the result of an error in a former survey.

Surveyed for Sette Troyer and others Aug 5, 6 & 7, 1888

W. S. Hanna
County Surveyor