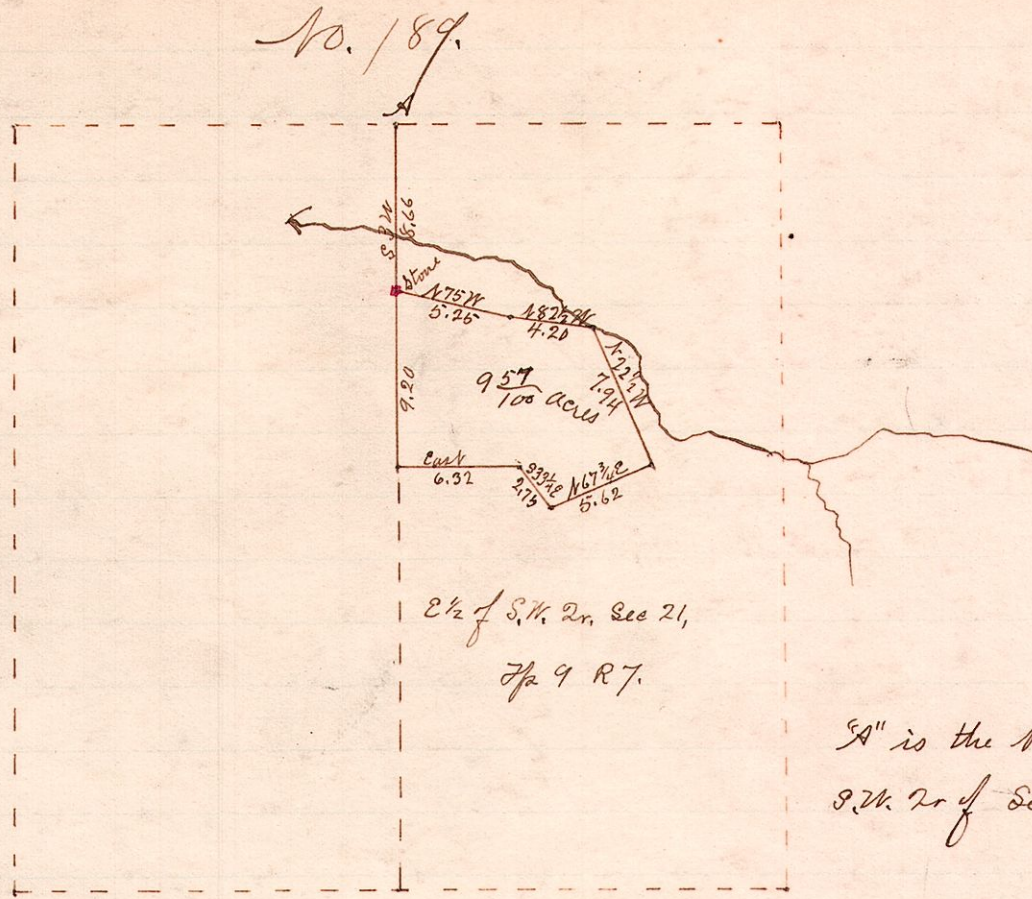


R 7<sup>th</sup> Sec 2<sup>nd</sup> R<sup>7</sup>  
 T 9<sup>th</sup> 21 SW 1/4 of E 1/2



"A" is the NW cor of the E 1/2 of the  
 S. 1/4, 2<sup>nd</sup> Sec 21, T 9<sup>th</sup> R 7.

Bear	Dist	Lat	Long	Cor	Cor	D. M.	N	S
		N	S	E	W	Dist.	acres	acres
S 3 1/2 W	9.20		9.17	.56	-9.12	-.56	.56	5.107
East	6.32			6.32		+6.32	6.32	
S 33 1/4 E	2.75		2.29	1.51	-2.28	+1.47	14.11	32.170
N 67 3/4 E	5.62	2.12		5.20	+2.14	+5.13	20.71	44.319
N 22 1/2 W	7.94	7.33		3.03	+7.36	-3.06	22.78	167.650
N 82 1/2 W	4.20	.54		4.16	+.54	-4.19	15.53	8.386
N 75 W	5.25	1.35		5.07	+1.36	-5.11	6.23	8.472

11.34-11.46 13.03-12.82

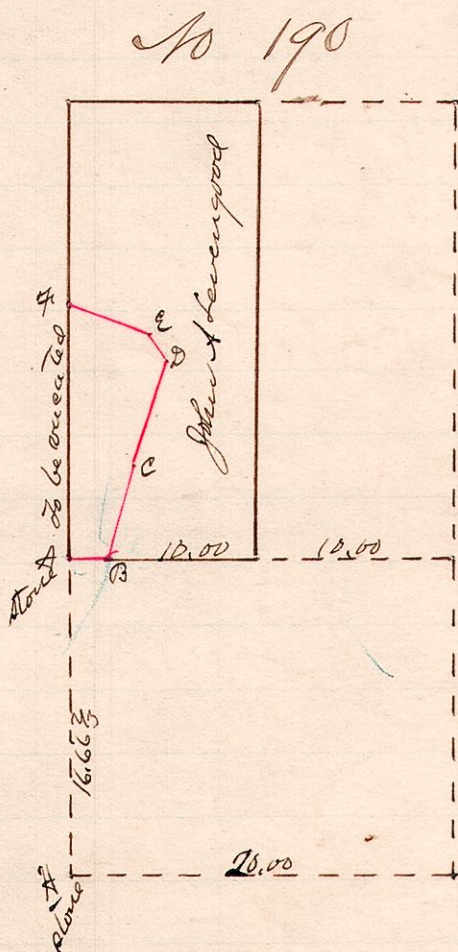
$\frac{228.827 - 37.277}{2 \times 10} = 9 \frac{57}{100}$  acres

Error 12 Error 21

Surveyed the above for Joseph Sowark <sup>and Emily Wilson</sup> ~~and Mrs. Sowark~~, March 26, 1889

W. S. Hanna,  
 County Surveyor

R 7<sup>th</sup> Sec  
 15<sup>th</sup> 20 32



County Road dedicated along  
 the following route to the public  
 by John A. Leveugood:  
 Beginning 20 chains west and  
 16.66 2/3 chains north of the south  
 east corner of Sec 32 T 20 R 15 - at  
 A S 88 3/4 E - 159 chains to B  
 B N 16 E 5.00 " " " C  
 C N 16 1/4 E 5.70 " " " D  
 D N 41 1/4 W 1.55 " " " E  
 E N 69 W 3.62 1/2 " " " F

"G" is the S.E. corner of the Section.

Surveyed for John A. Leveugood et al March 29, 1889

W. S. Hanna,  
 County Surveyor