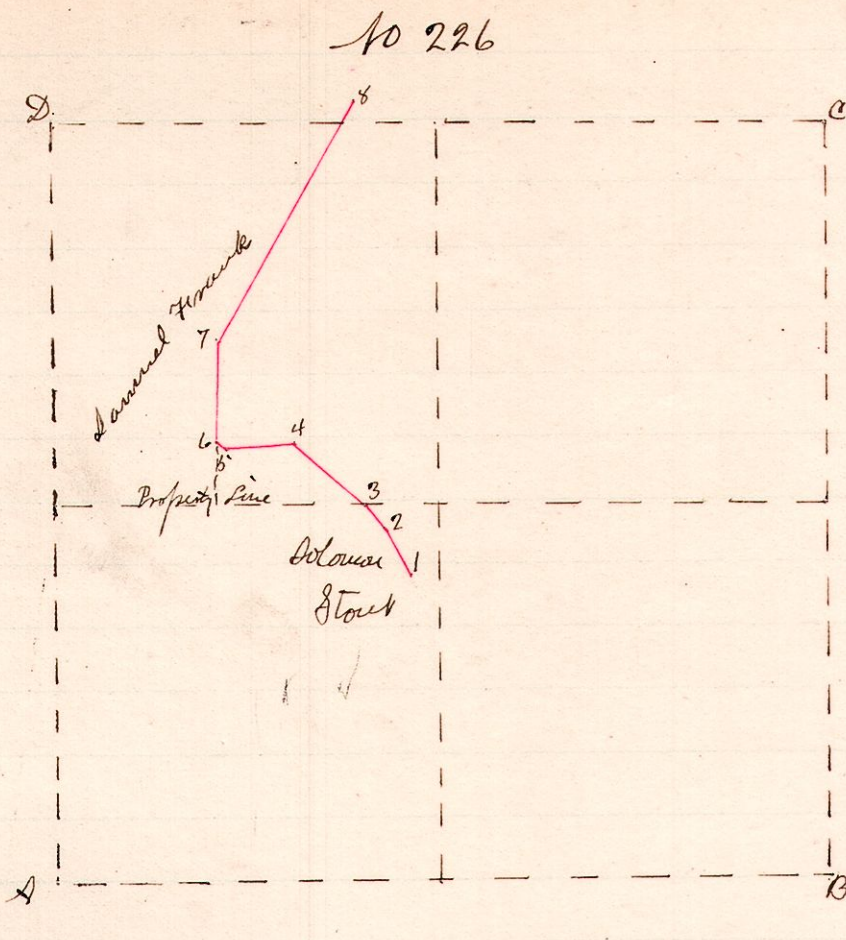


R. Tp Sec 2r
15 19 17 NE

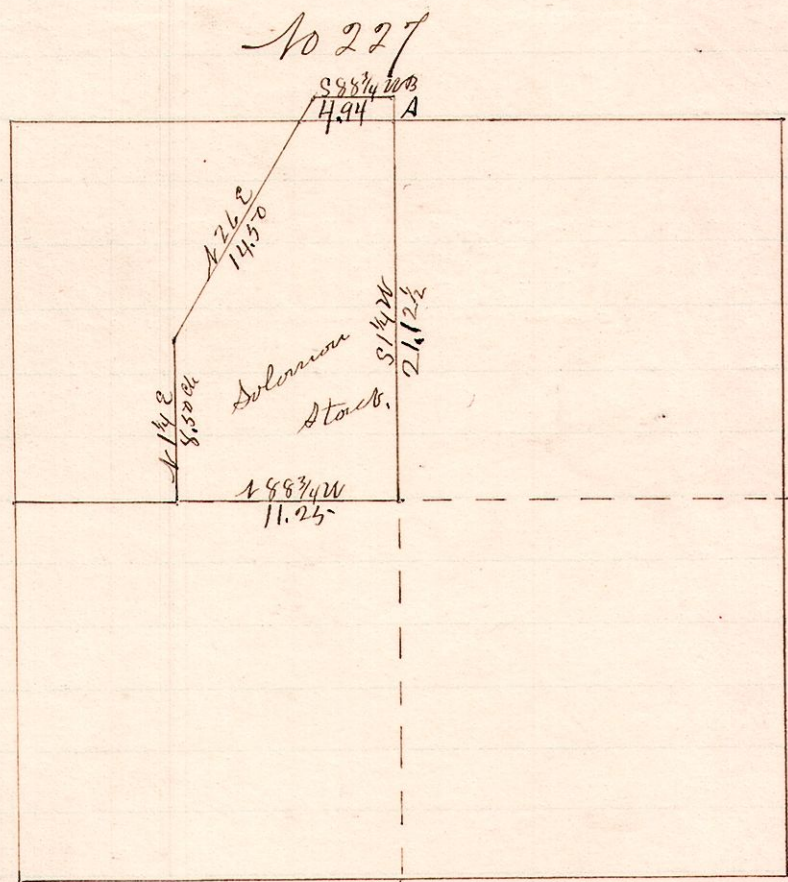


Description.
Beginning at a point in
a road N.W. of Solomon Stout's
house in the N.E. 1/4 of Sec 17

1. N 26 1/2 W	2.54
2. N 37 1/4 W	1.17
3. N 49 W	4.50
4. S 83 W	3.50
5. N 32 W	.50
6. N 3 E	5.06
7. N 26 E	14.50

ABCD is the N.E. 1/4 of Sec 17, Tp 19 R 15
Viewers, Isaac Vance, John S. Hughes, John Fritz.
Chain Carrier: Samuel Franks William Stout
Marker: Harry Huffman
A survey made by order of the Trustees of Washington Tp. to survey
and view a township road petitioned for by Solomon Stout et al.
July, 1889
W.S. Hanna Surveyor.

R Tp Sec 2r, 24
15 19 17 N.E. NW



"A" is the N.E. corner of the
N.W. 1/4 of N.E. 1/4 of Sec
17, Tp 19, R 15.
"B" is 1 chain north of "A"
and is in the S.E. 1/4 of
Sec 8.

The above is a correct plat of this portion of Solomon
Stout's land as surveyed and lying in N.W. 1/4 of N.E. 1/4 of Sec 17.
July 1889
W.S. Hanna
County Surveyor.