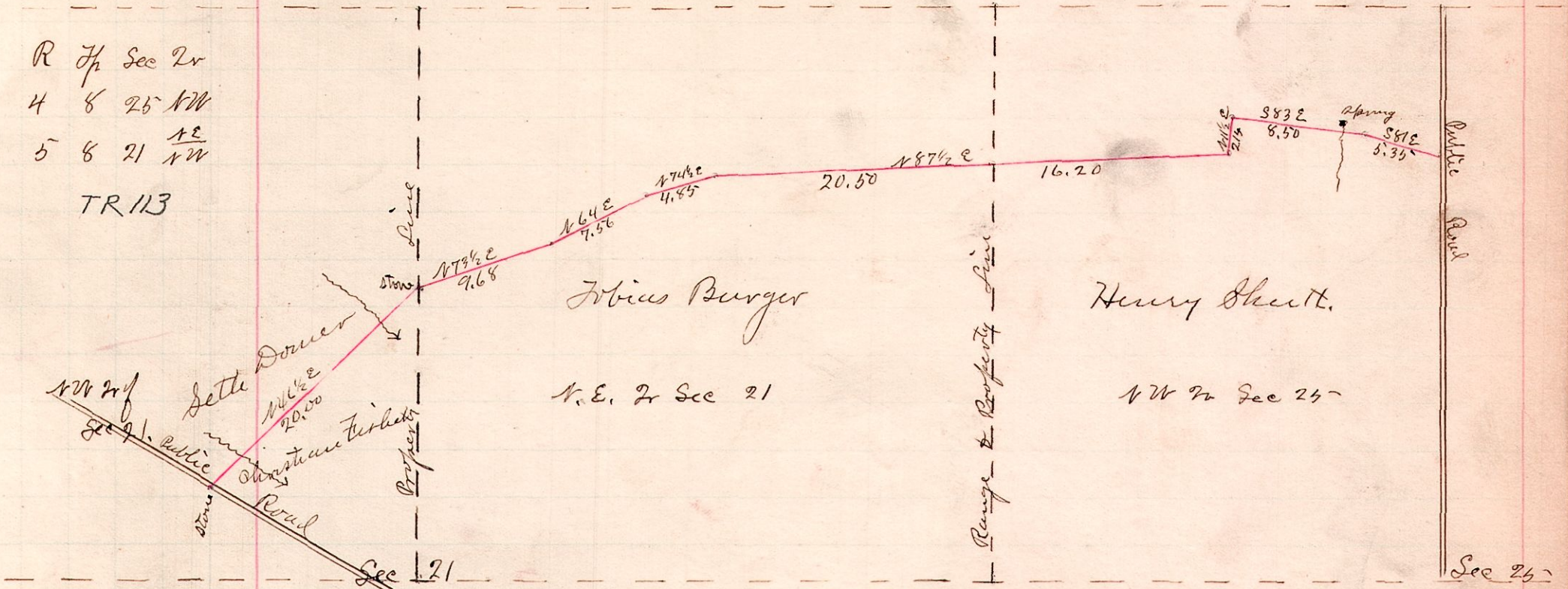


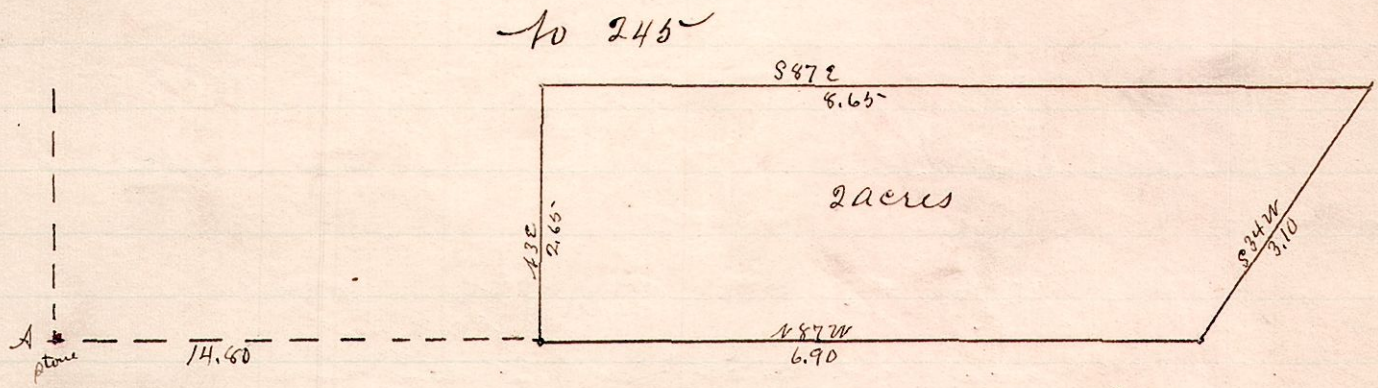
No. 244.

R Tp Sec 2r
4 8 25 NW
5 8 21 NE
TR 113



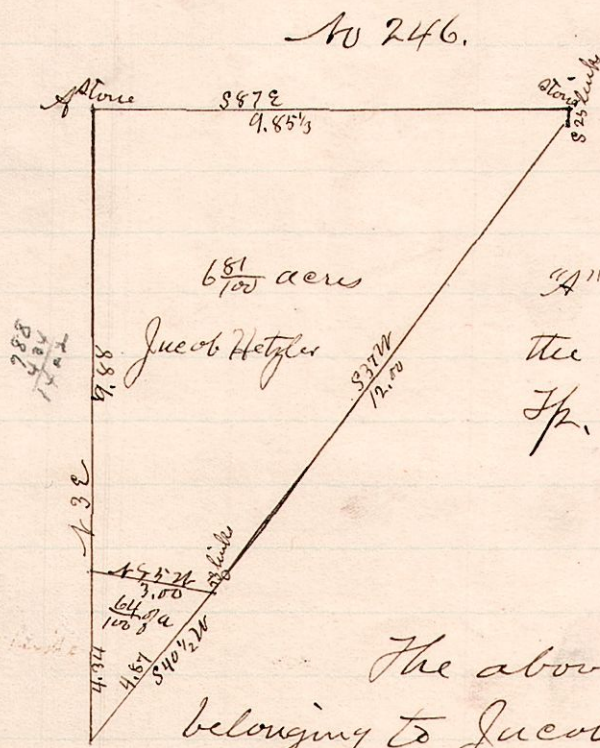
County Road petitioned for by Johas Burger and others.
 David Minner
 J. G. Bilderback } Viewers. Jacob H. Domes }
 W. R. Donald } Michael Domes } Chain carrier. Cornelius Huesenker, Marker.
 Surveyed by order of Commissioners, Dec 11, 1859.
 W. S. Hanna, Co. Surveyor.

R Tp Sec 2r
7 8 4 SW



A is a stone at the S.W. corner of the S.W. 1/4 of Sec. 4, T. 8, R. 7.
 Surveyed for David Dugan Dec 30, 1859.
 W. S. Hanna, Co. Surveyor.

R Tp Sec 2r Pt
5 9 7 N.W. 1/4 SW



"A" is a stone at the N.W. corner of the south 1/2 of the N.W. 1/4 of Sec. 7, T. 9, R. 5.

The above is a correct plot of lands belonging to Jacob Hetzler and Baptist Church as above described.

W. S. Hanna, Co. Surveyor.