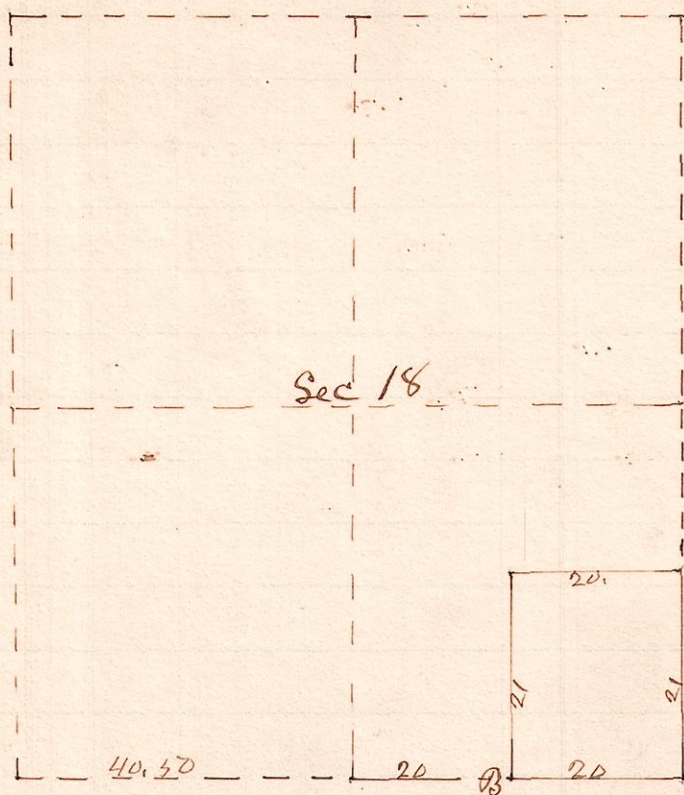


No 263.

R 7 1/2 Sec 2, R 4
8 8 18 SE SE



Stone at A and found corner at B

Measures to A, W.O. 12 West 9 links,

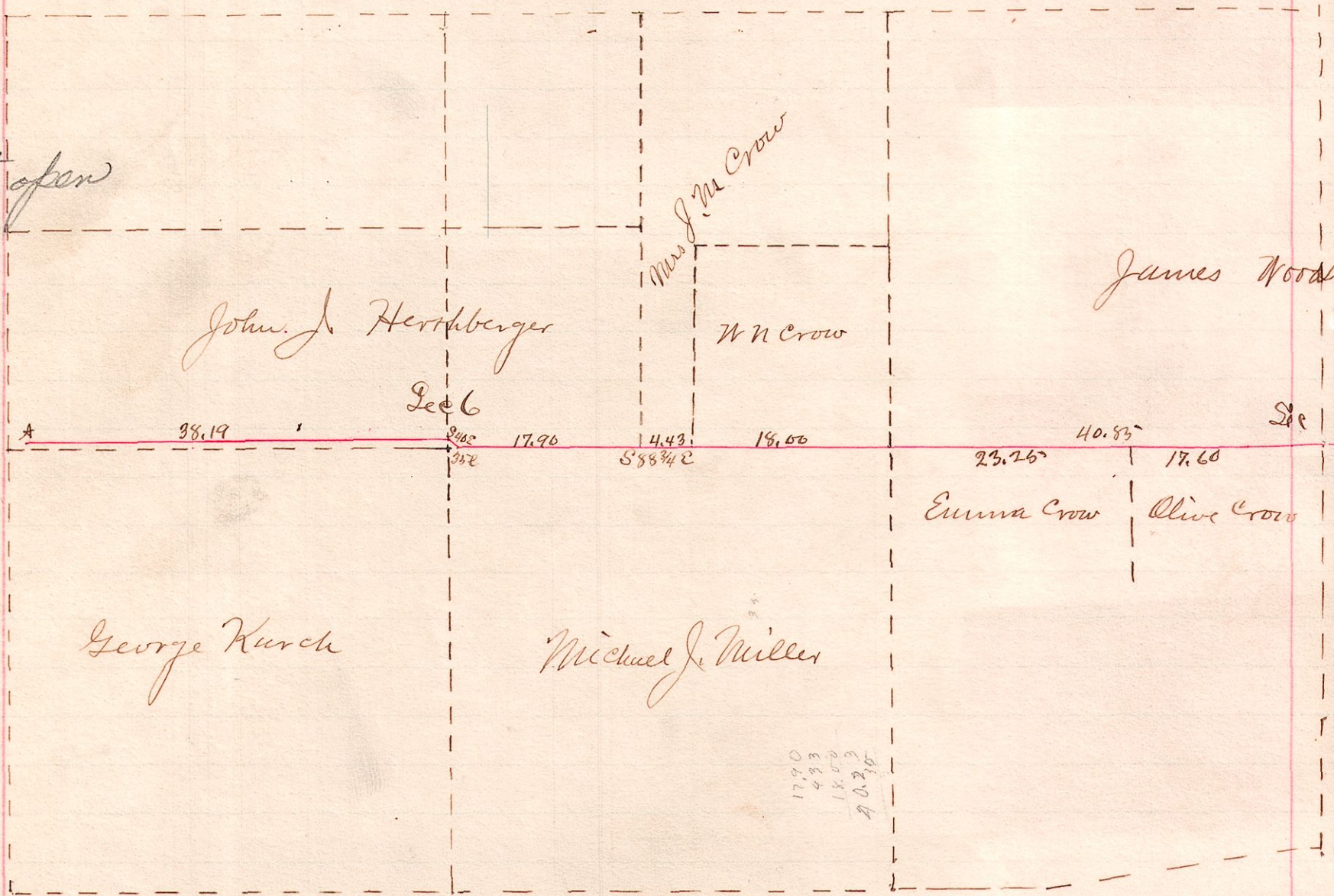
A survey made of the S.E. 1/4 of the S.E. 1/4 of Sec 18 Tp 8 R 8 for
A.H. Sloan, March 31, 1890

W.S. Hanna
County Surveyor,

No 264

R 7 1/2 Sec
11 14 1/4

This road not open



Pain's Tp. Road Petitioned for by W.M. Crow et al.
 George Stetzback }
 Christian Kilmer } Viewers
 Gottlieb Rottmann }
 Fred Kurch }
 H. S. McHerty } Chain Carriers
 J. J. Hershberger marker

Surveyed and viewed the above road by order of the Commissioners
 April 14, 1890
 W.S. Hanna
 County Surveyor