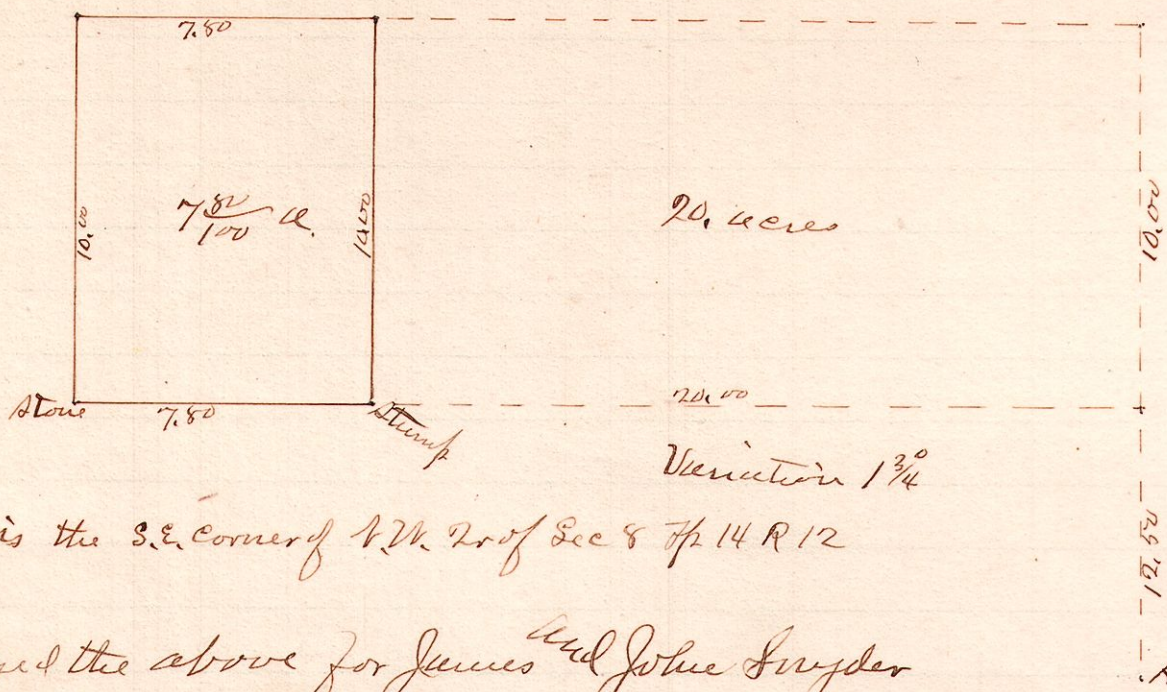


No. 268

R 7th Sec 2^d
12 14 8 1st W



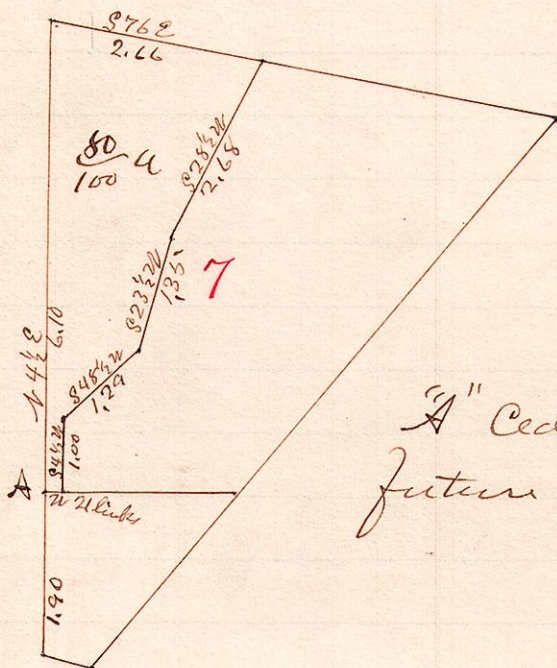
A is the S.E. corner of N.W. 2nd of Sec 8 7th 14 R 12

Surveyed the above for James and John Snyder
April 8, 1890

W. S. Hanna, County Surveyor,

No 269.

R 7th 7th Lot Village
6 10 4th 19 7



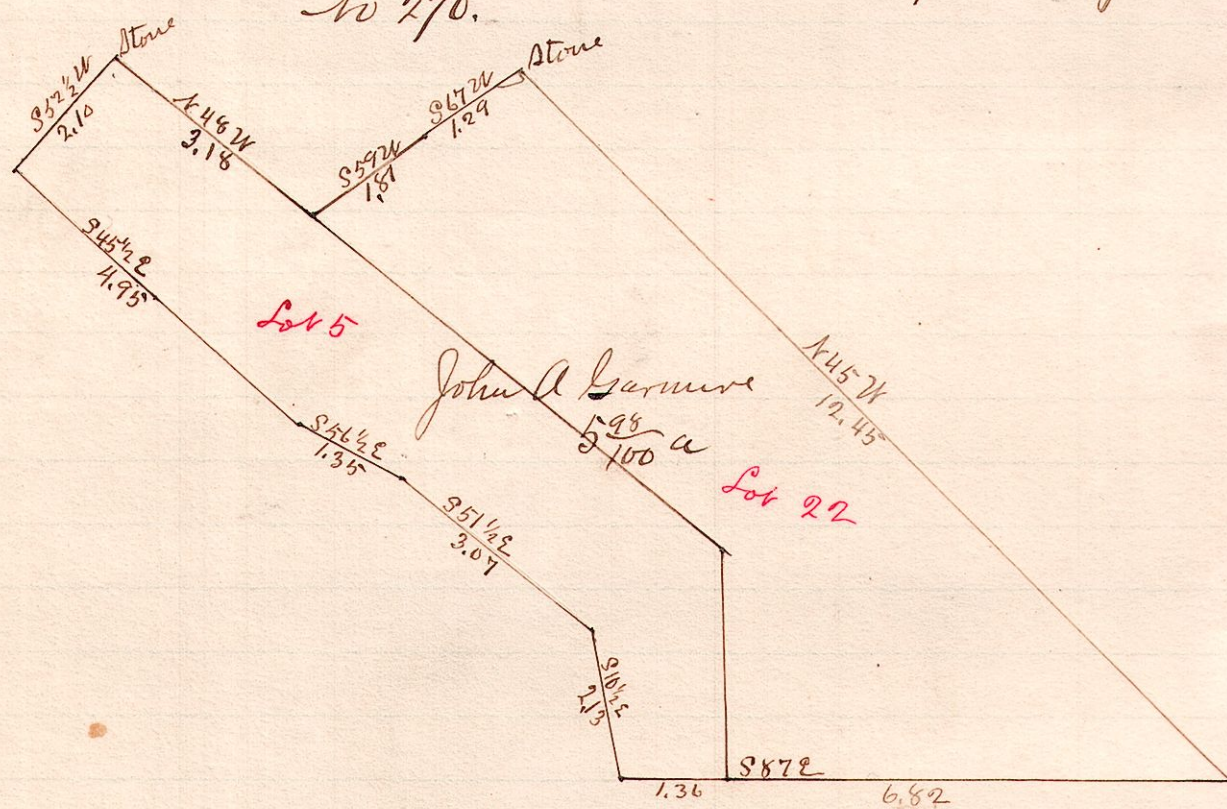
"A" Cedar - starting point for future survey.

Surveyed the above for Leonard and Gottlieb Rottman April 8, 1890

W. S. Hanna
County Surveyor,

No 270.

R 7th 7th Lot Village
6 10 4th 18 5 & 22.



Being out lots 5 & 22 in the town of Benton, Holmes Co Ohio,
Surveyed for John A. Garnure April 8, 1890

W. S. Hanna
County Surveyor,