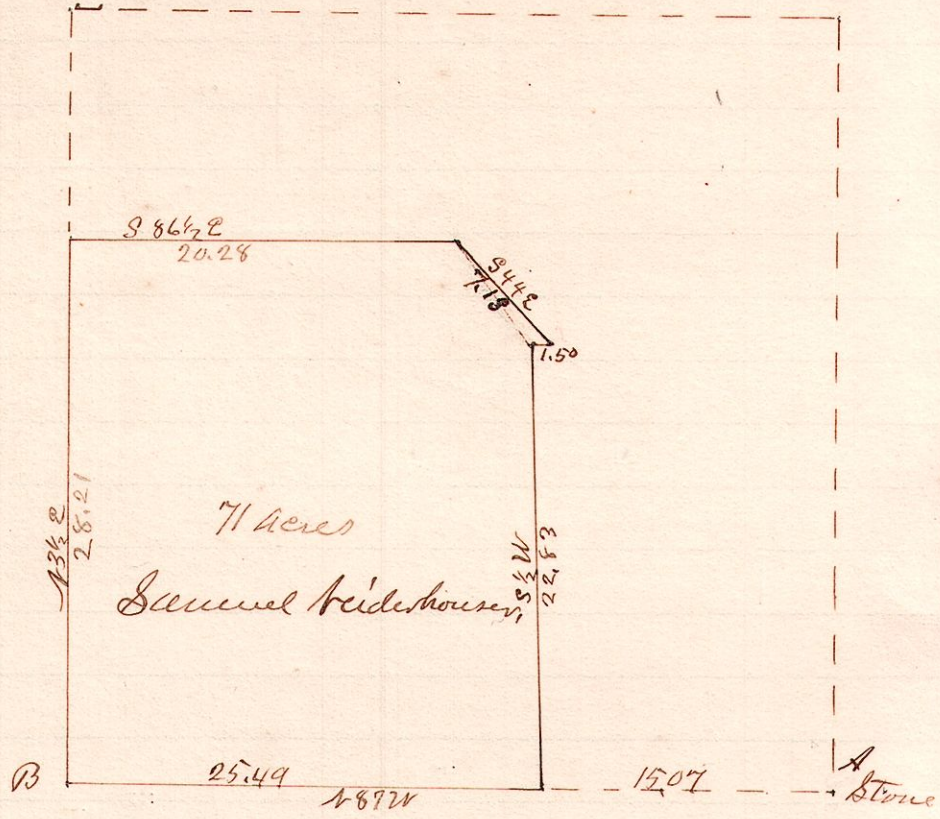


No 271

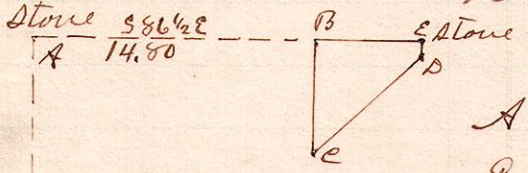
R 7^h Sec 4 Pt
9 8 4 NW SW



A is the S.E. Corner of N.W. 7th of Sec 4 T⁸ R 9th Q B is the S.W. Corner of said quarter
 Surveyed the above for Zachariah Powelson as executor and Samuel Heiderhousen as purchaser April 10 1890
 W. S. Hanna
 County Surveyor,

No 272.

R 7^h Sec 2nd Pt
7 8 7 NW N



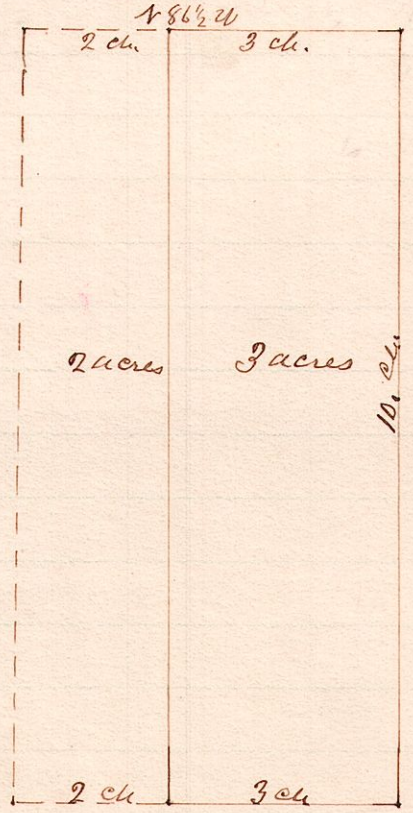
A is a stone at the N.W. corner of N.W. 7th of Sec 7, T⁸ R 7

- B 8 3/4 W 5.88 to center of road
 - C 14 9/16 E 7.71
 - D 13 1/2 E .53 to stone
 - E 48 1/2 W 6.57 to Beginning
- } 1 78/100 acres

Surveyed the above for W. P. Waltham and F. M. Burklew April 16, 1890
 W. S. Hanna
 County Surveyor,

No 273.

R 7^h Sec 2nd
7 9 19 NW



Out Lot 64 in the Village of Millersburg Ohio

Surveyed for R. M. Cameron April 21, 1890
 W. S. Hanna
 County Surveyor,