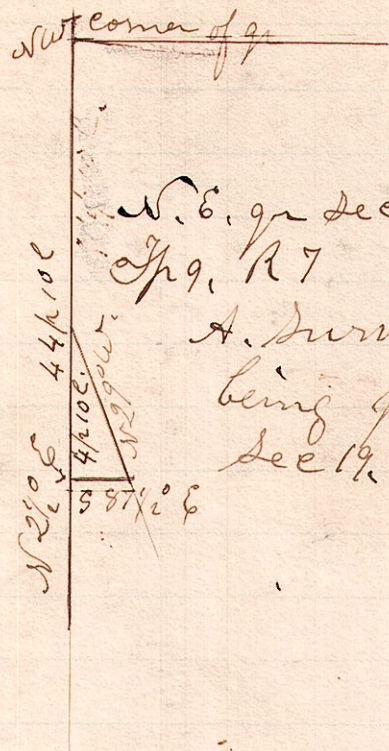


No 288.

R 3/4 sec 9 pt.
7 9 19 NW. W



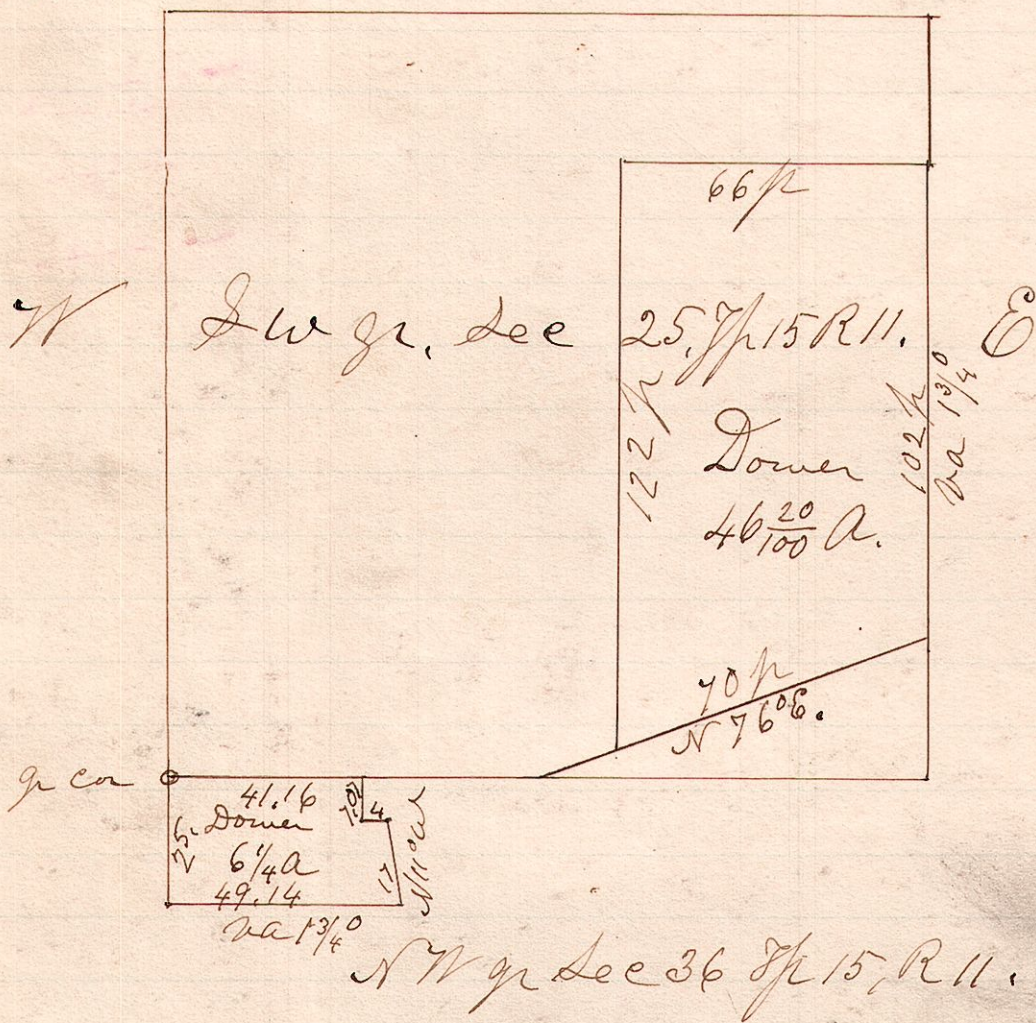
N. 6. gr Dec 19
Sp 9, R 7

A. Survey made for J. M. Gray and Edw. L. Arnold
being part of the west part of the NW 1/4 of
Sec 19, Sp 9, R 7. August 9th 1890

H. H. Robinson
Co Surveyor.

11 15 25 SW
36 NW.

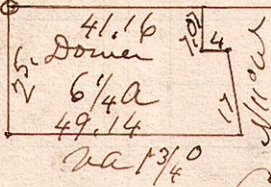
No 289.



W 1/4 sec 25, Sp 15 R 11.

Dower
46²⁰/₁₀₀ A.

70 ft
N 76° 08'



NW 1/4 Sec 36 Sp 15, R 11.

Assigned Dower as above indicated to Anna Elisabeth
Meiller.

August 12th 1890.

H. H. Robinson
Surveyor.

Commissioners
H. H. Robinson.
Jacob Freed.
Valentine Stahl.

Chain carriers.
James B. Leeper
Valentine Stahl.

Assessor
Jacob Freed.