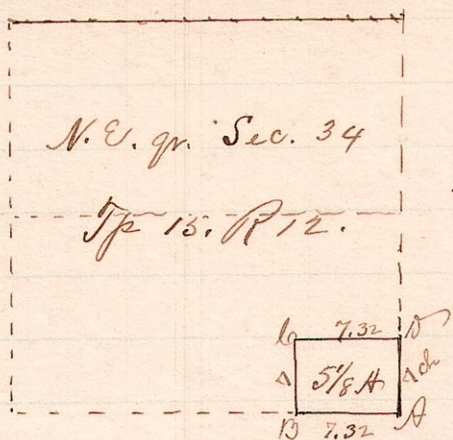


R. Tp. S. Qr 04
12. 15 34 N.E. S $\frac{1}{2}$ S.E.

~ No. 309. ~



A is a stone at the South-East corner of North East quarter of Section Thirtyfour (34) Tp. 15, Range 12.

Chairman:

W. H. Slutter
J. B. Leeper

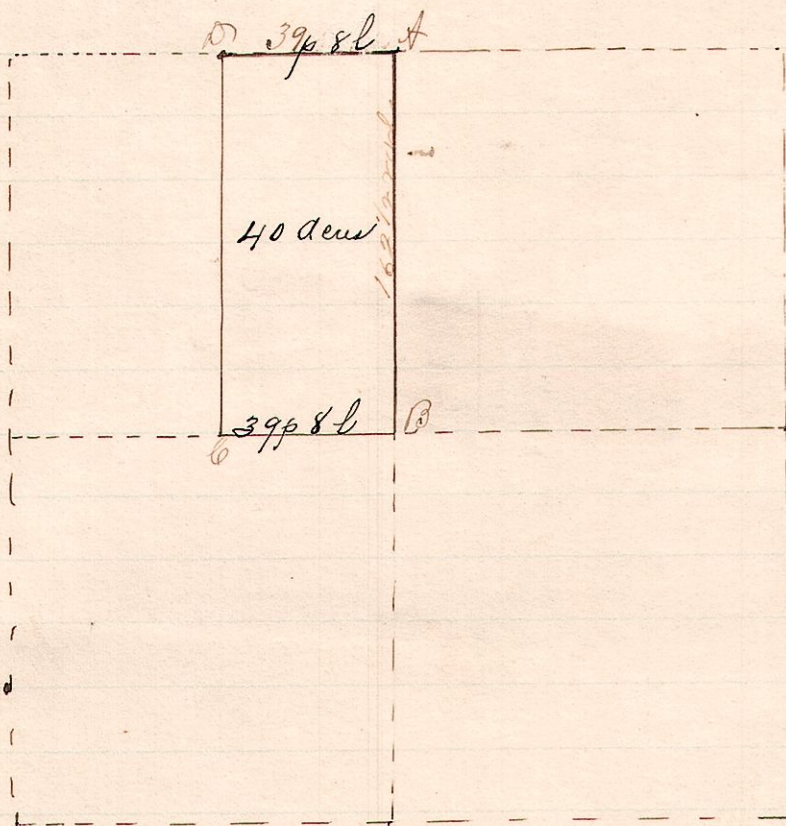
W. B. Leeper, Marker.

A Survey made by the order of the Common Pleas Court of Holmes Co., for Mary Rowland, Jan. 17, 1891.

Frank H. Genet,
County Surveyor.

~ No. 310. ~

12 15 31 NW E $\frac{1}{2}$ Qr



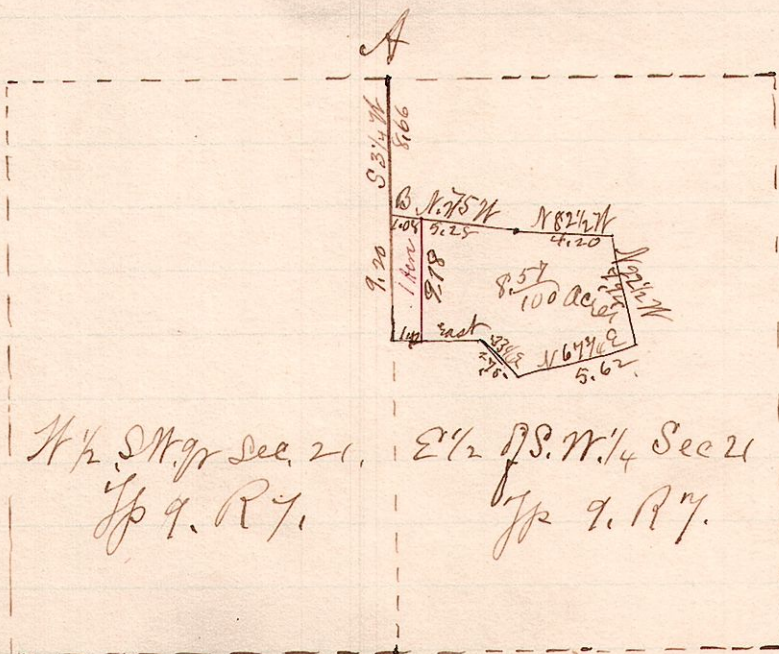
A is a stone at N.E. cor of N.W. Qr of Sec 31. Tp 15 R 12
B is a stone at center of Sec. 31.
Bought by W. H. Slutter.

Surveyed Jan. 17 to March 3d, 1891, By request of Richard McCulloch for his father Phineas McCulloch.

Frank H. Genet,
County Surveyor.

~ No. 311. ~

21
7 9 4 S.W. 1/4 E $\frac{1}{2}$ Qr



A is a stone at N.W. corner of E $\frac{1}{2}$ of the S.W. Qr. of Sec 21. Tp 9 R 7.
B is a stone, 8.66 ch S of A

Surveyed the above for Emily Wilson Jan. 2, 1891.

Frank H. Genet,
County Surveyor.