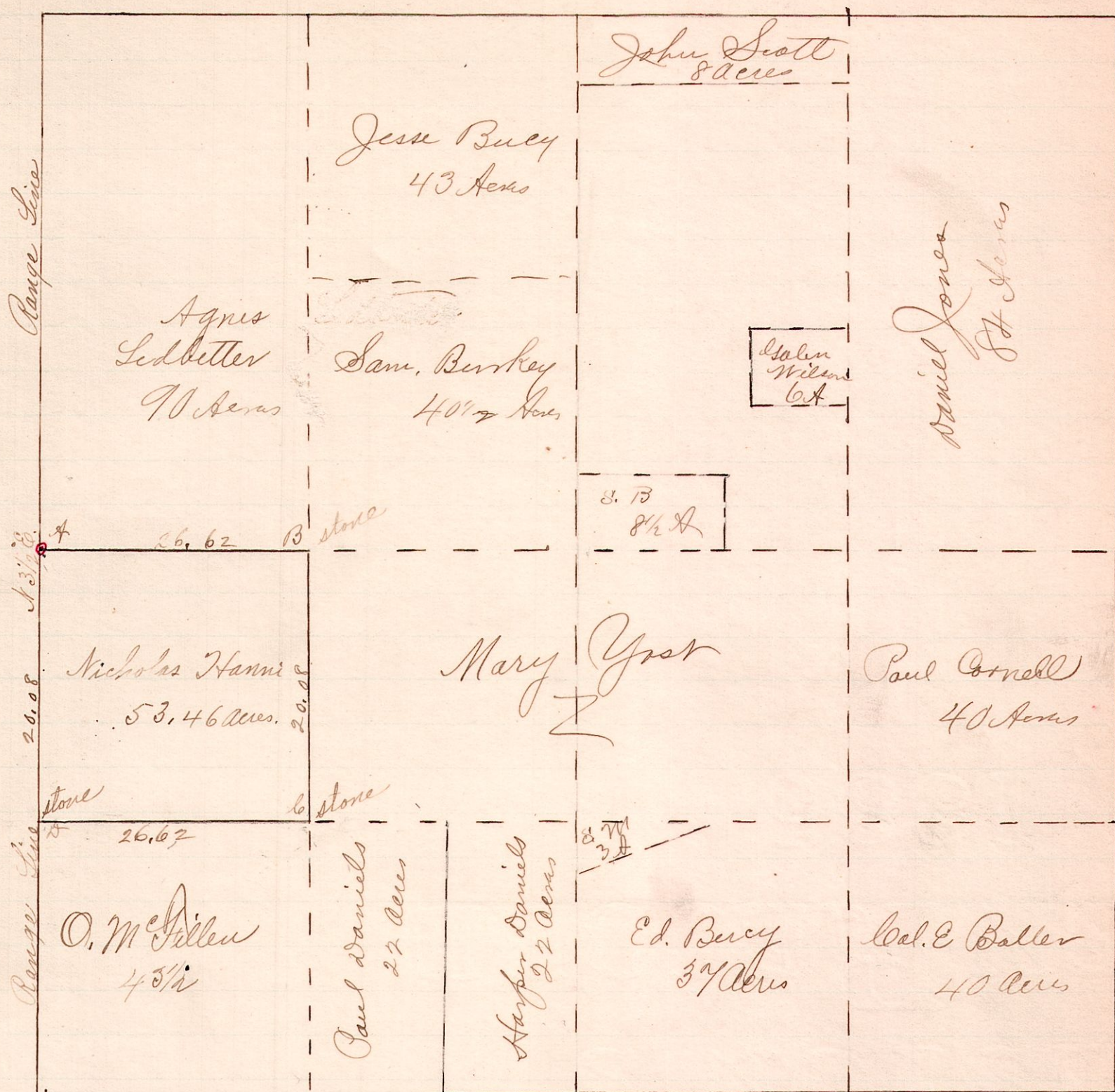


R T<sup>2</sup> Sec 2r Ph  
8 8 6 S N<sup>1</sup>/<sub>4</sub> A N<sup>1</sup>/<sub>4</sub>

~ No. 320. ~



Surveyed the above at the request of  
 Nicholas Hanni for the purpose of determining the corner A  
 and the line A B, March 31<sup>st</sup> & April 1, 1891.  
 Frank H. Genes  
 County Surveyor.