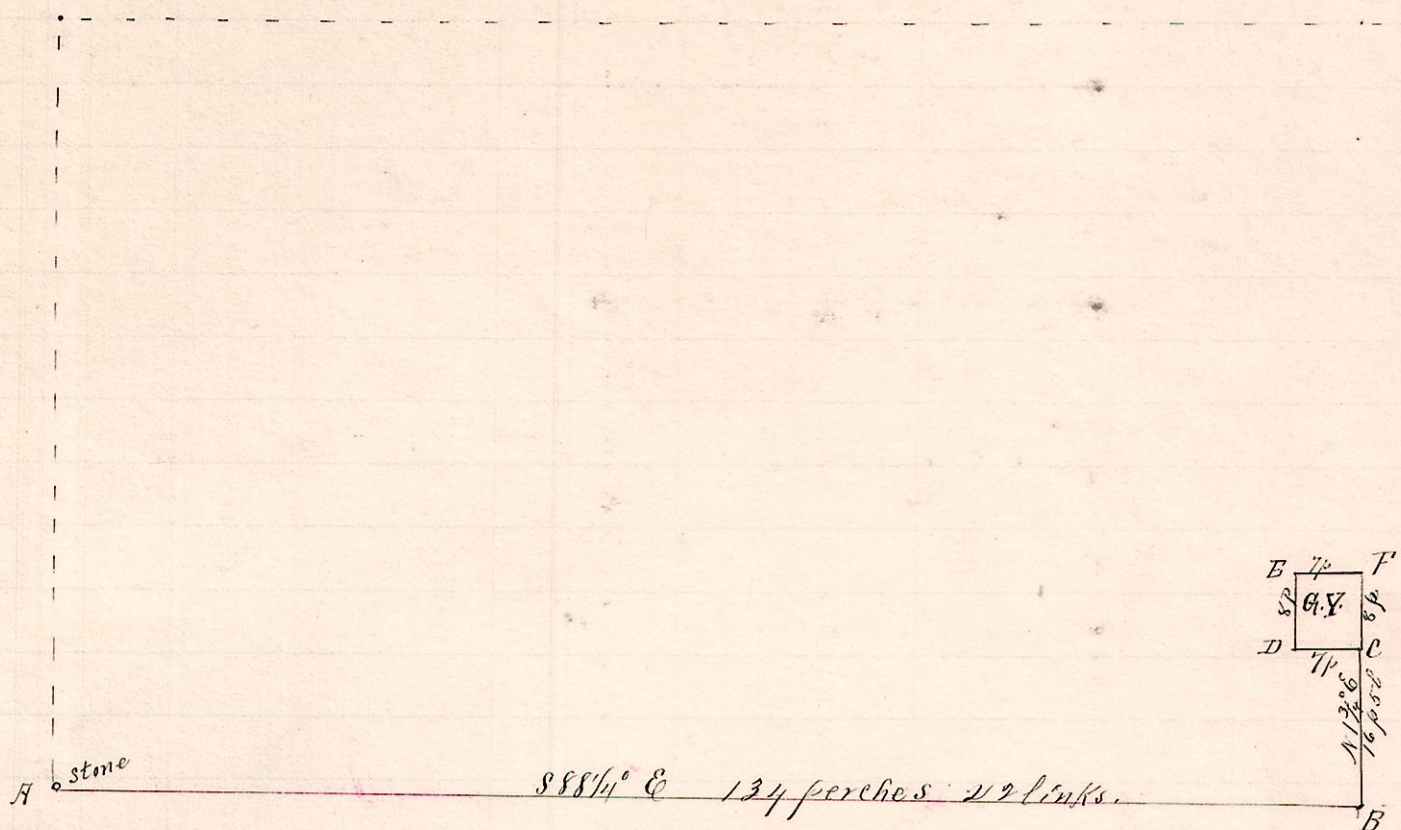


No. 381.

R 7p Sec 24  
12 15 35 NW 8 1/2



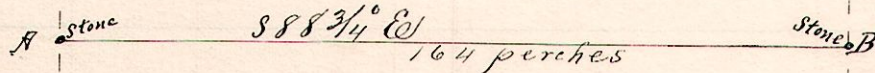
Surveyed the above for G. M. Shotts and Trustees of Satterwick  
Feb. 11, 1892.

Frank H. Genet,  
County Surveyor

No. 392.

R 7p Sec 25  
11 15 29 SW

N. W. Q. Sec 29, Tp. 15, R. 11.



L. J. Arnold

SW 1/4, Sec. 29, Tp. 15, R. 11.

Surveyed the above for A. F. Shotts and L. J. Arnold,  
Feb. 11, 1892. Frank H. Genet,  
County Surveyor