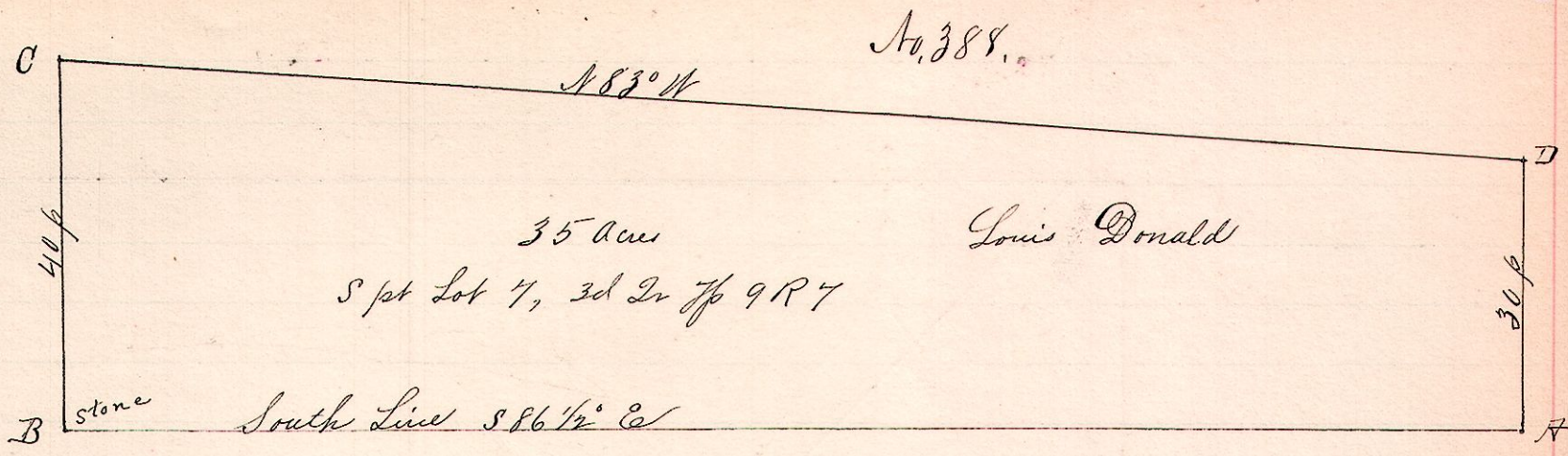


R 7th 14th Lot
7 9 3rd 7 Spt

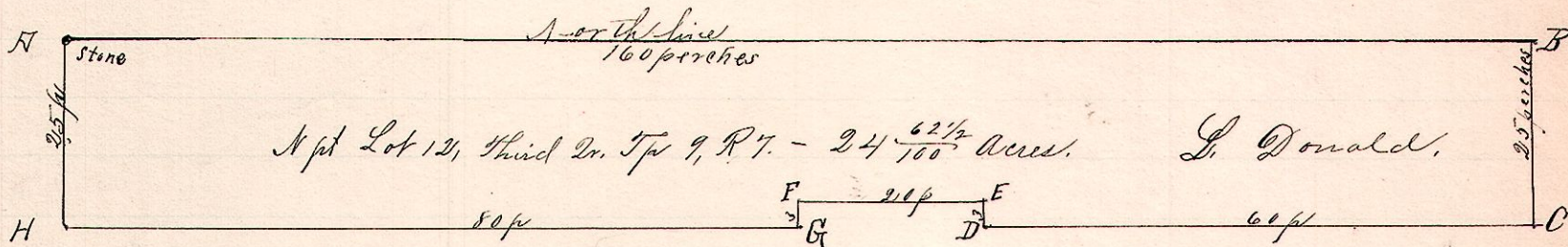


Surveyed the above Spt Lot 7, 3d Tr 7p 9R7 for L. G. Donald,
April 6th 1892.

Frank H. Genet,
County Surveyor.

No. 389.

7 9 3rd 12 Spt

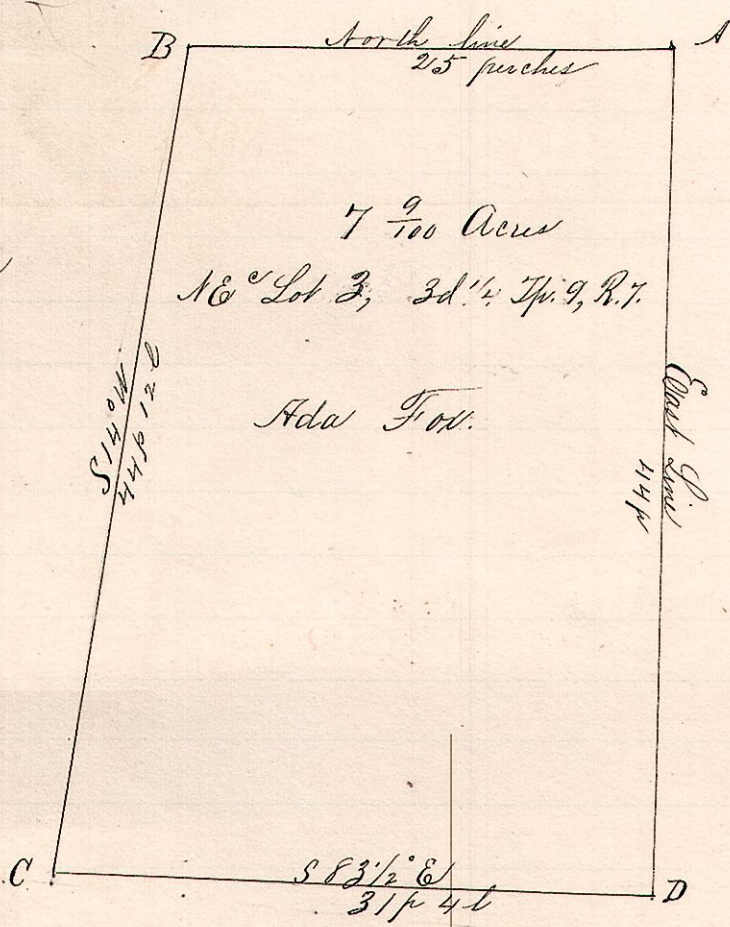


Surveyed the above for Lewis Donald and Mrs. R. Donald,
April 6th 1892.

Frank H. Genet
County Surveyor.

No. 390.

7 9 3rd 3 NEth



Notes

"A," is the northeast corner Lot 3, 3rd Tr. 7p 9 R7.
"B," a post on north line said Lot 3,
25 perches west of "A."
"C," a post S 14° W 44 p 12 c from B.
"D," a post on east line S 83 1/2° E 31 p
4 links from C and 44 perches
south of A.

Surveyed the above for Ada Fox and
Mrs. Opusilla M^cElroy, et al, in the amicable partition M^cElroy estate
March 22nd 1892.

Frank H. Genet,
County Surveyor.