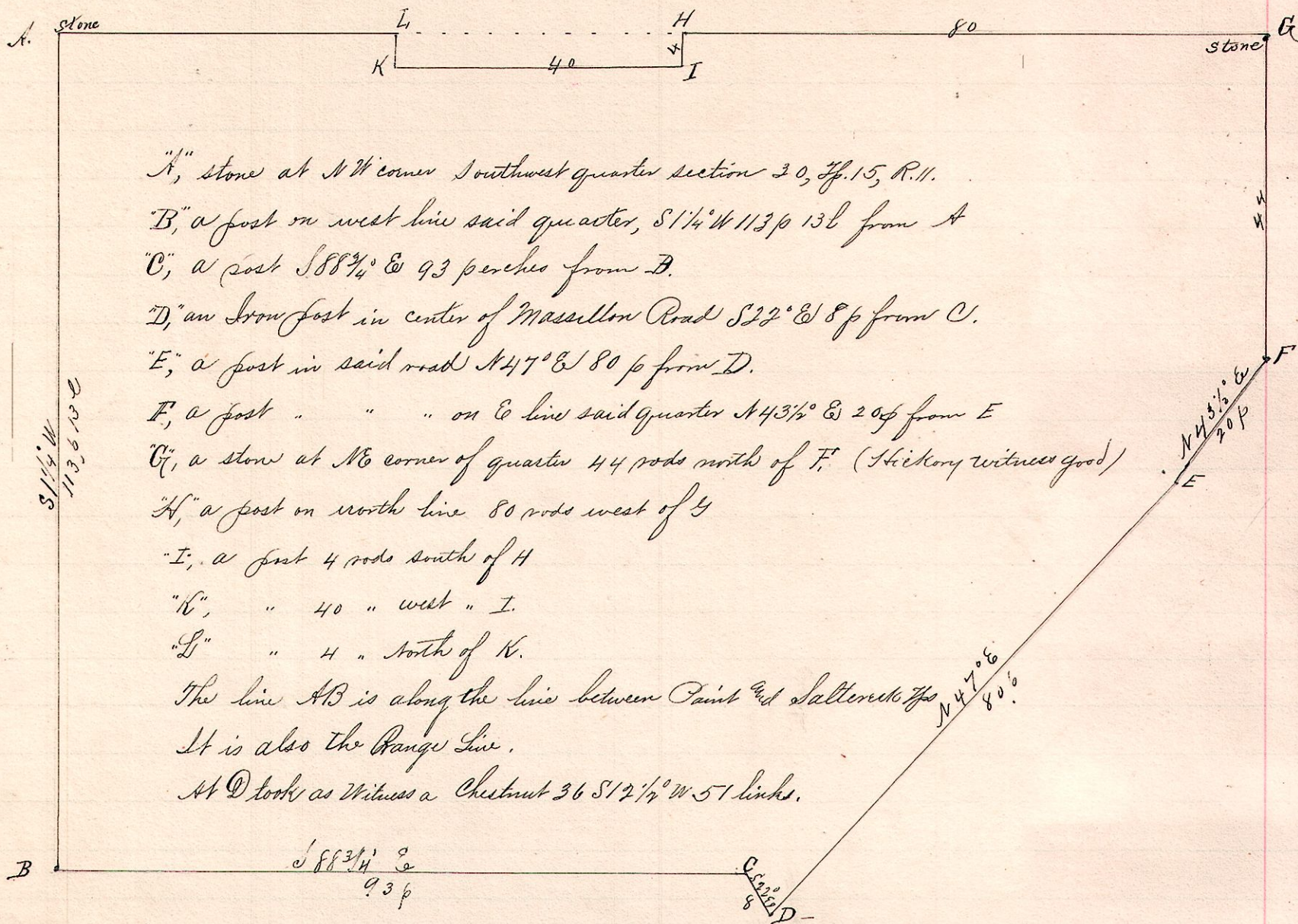


No. 396

R 7p Sec 20 Pt.
11 15 30 SW NW



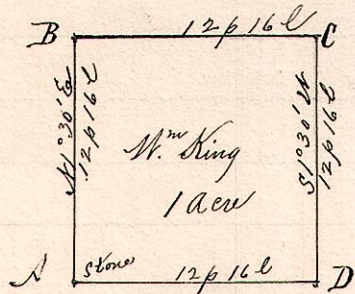
"K", stone at NW corner southwest quarter section 20, T. 15, R. 11.
 "B", a post on west line said quarter, S 1 1/4° W 113 p 13 l from A
 "C", a post S 88 3/4° E 93 perches from B.
 "D", an iron post in center of Massillon Road S 22° E 8 p from C.
 "E", a post in said road N 47° E 80 p from D.
 "F", a post " " " on E line said quarter N 45 1/2° E 20 p from E
 "G", a stone at NE corner of quarter 44 rods north of F. (Hickory witness good)
 "H", a post on north line 80 rods west of G
 "I", a post 4 rods south of H
 "K", " 40 " west " I.
 "L", " 4 " south of K.
 The line AB is along the line between Point and Salter's
 It is also the Range Line.
 At D took as witness a Chestnut 36 S 12 1/2° W 51 links.

Surveyed the above for Joseph S. McIntire and others
 April 20, 1892.

Frank H. Gmet, County Surveyor.

No. 397

11 15 30 SW SW



Notes.

"N" is a stone at the southwest corner of the southwest quarter of section 20, T. 15, R. 11.
 "B" a post on west line 12 p 16 l. N 20° E. of A.
 "D", a post on south line 12 p 16 l east of N.

Surveyed the above for M^m King & J. & Leander M^cIntire,
 April 20, 1892.

Frank H. Gmet,
 County Surveyor.