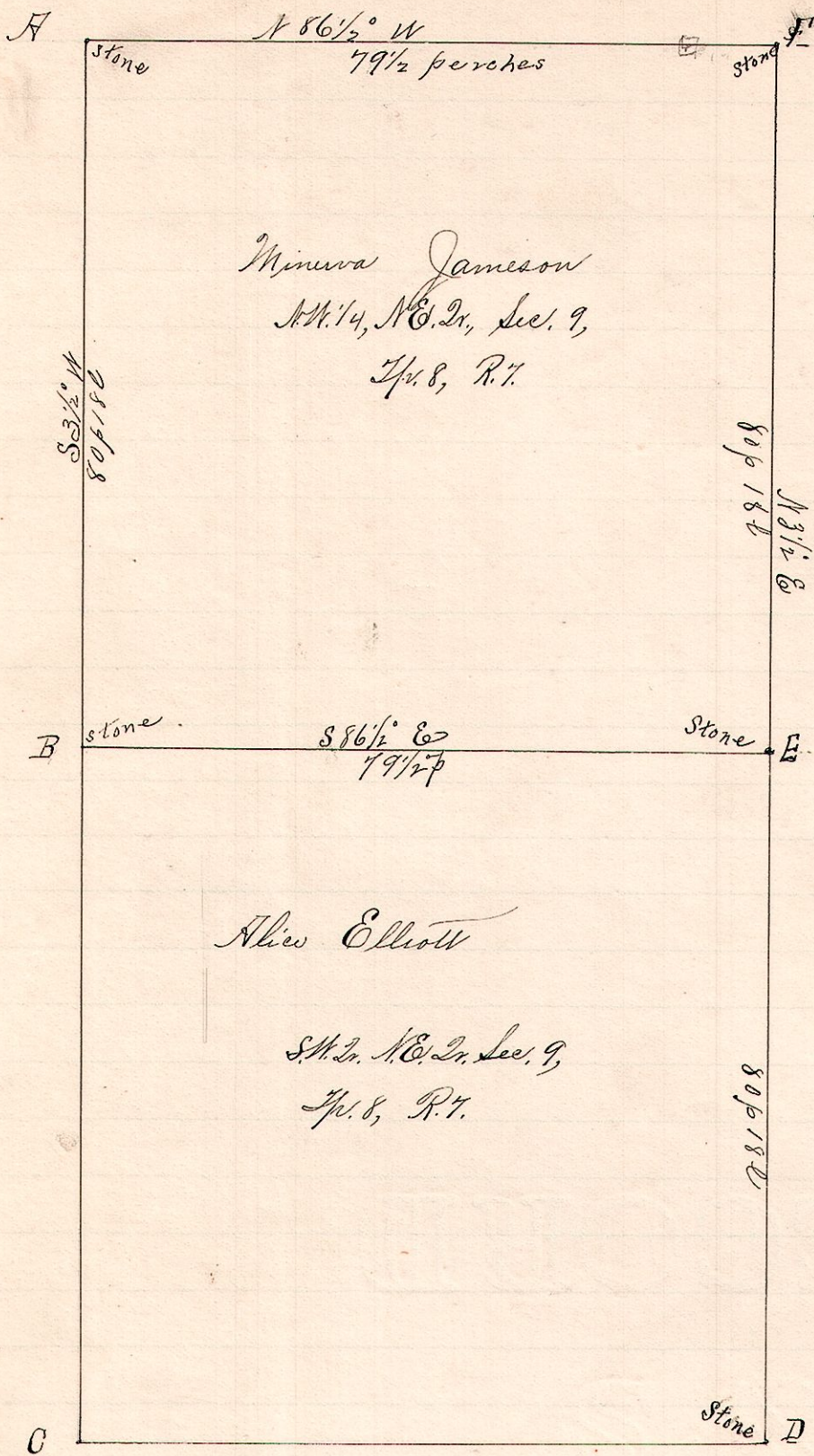


No. 406

R 7th Sec 2
7 8 9 NW 1/4



George Gray

E 1/2 NE 1/4 Sec 9 T. 8 R. 7

80 acres

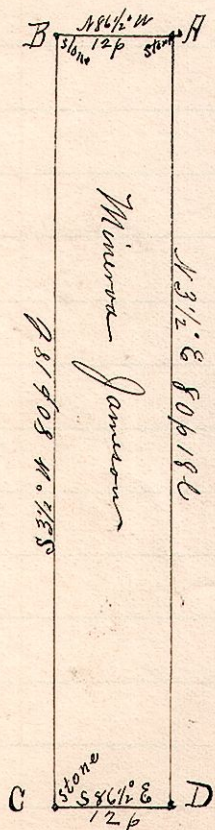
- Notes -

"A" stone at the northwest corner of the northeast quarter Sec. 9, T. 8, R. 7.
 "F" a stone at half 1/4 corner on north line S 86 1/2 E 79 1/2 perches from A.
 "D" a stone at half quarter corner on south line S 3 1/2 W 161 p 10 l from F.

A, F and B, established stone corners for Quarter quarter corners.
 Surveyed the above for Elliott and Jameson
 May 31 and June 1, 1892. Geo. Gray, C. J. Gunt, David Jameson, assistants.
 Frank H. Gunt
 County Surveyor.

No. 407

7 8 9 NW 1/4



Notes

"A" a stone at the northeast corner of the NW 1/4, Sec. 9, T. 8, R. 7.
 "B" a stone on north line said quarter N 86 1/2 W 12 p from A.
 "C" a stone S 21 1/2 W 80 p 18 l from B.
 "D" a stone on east line said quarter S 86 1/2 E 12 p from C,
 and S 3 1/2 W 80 p 18 l from A.

The tract ABCDA is 6 acres off the east side
 of the NE quarter of the NW 1/4 Sec 9 T. 8 R. 7.
 Chairman, Charles J. Gunt and Geo. Gray (sworn)
 Surveyed for Minerva Jameson

June 1, 1892.

Frank H. Gunt
 Co. Surveyor.