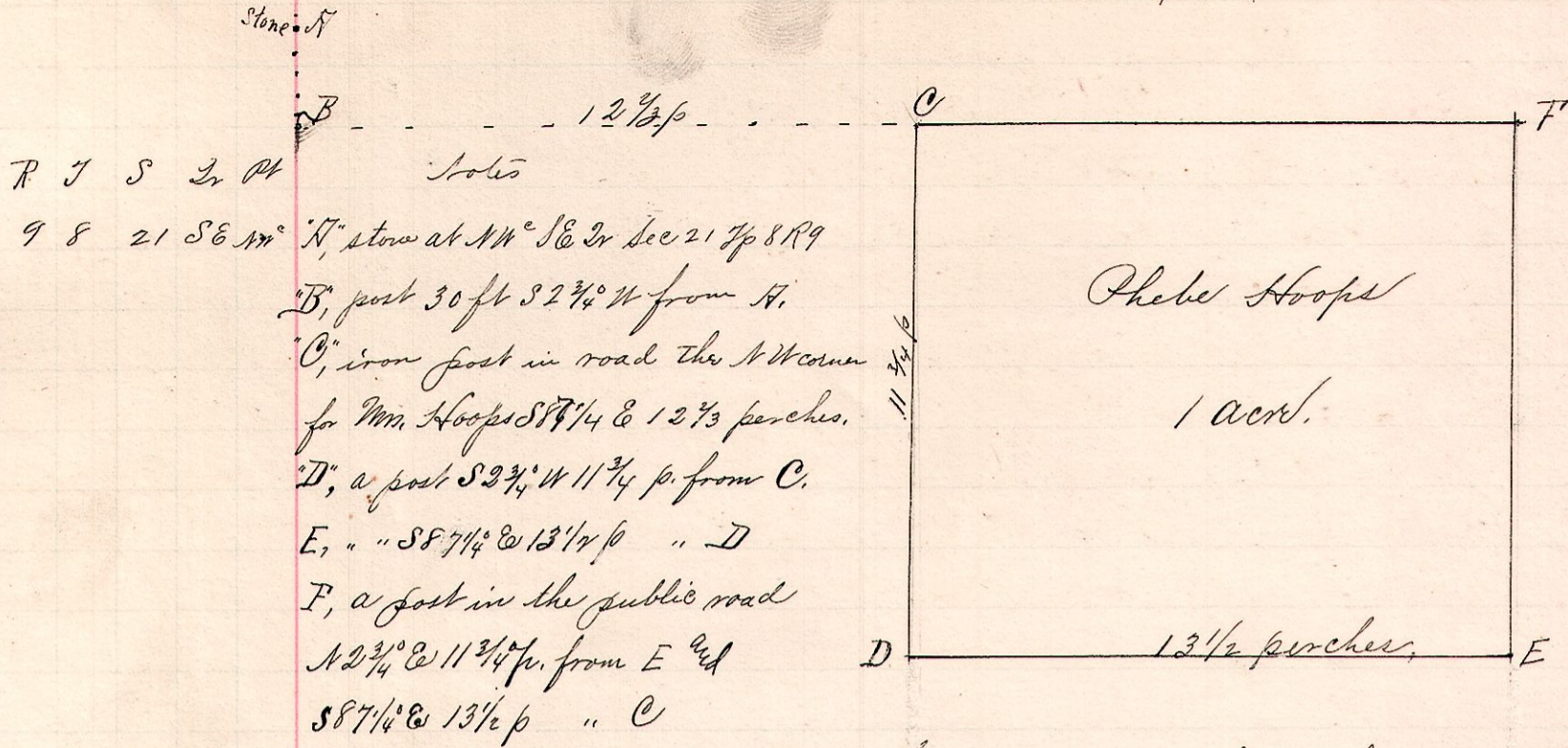


No 415.

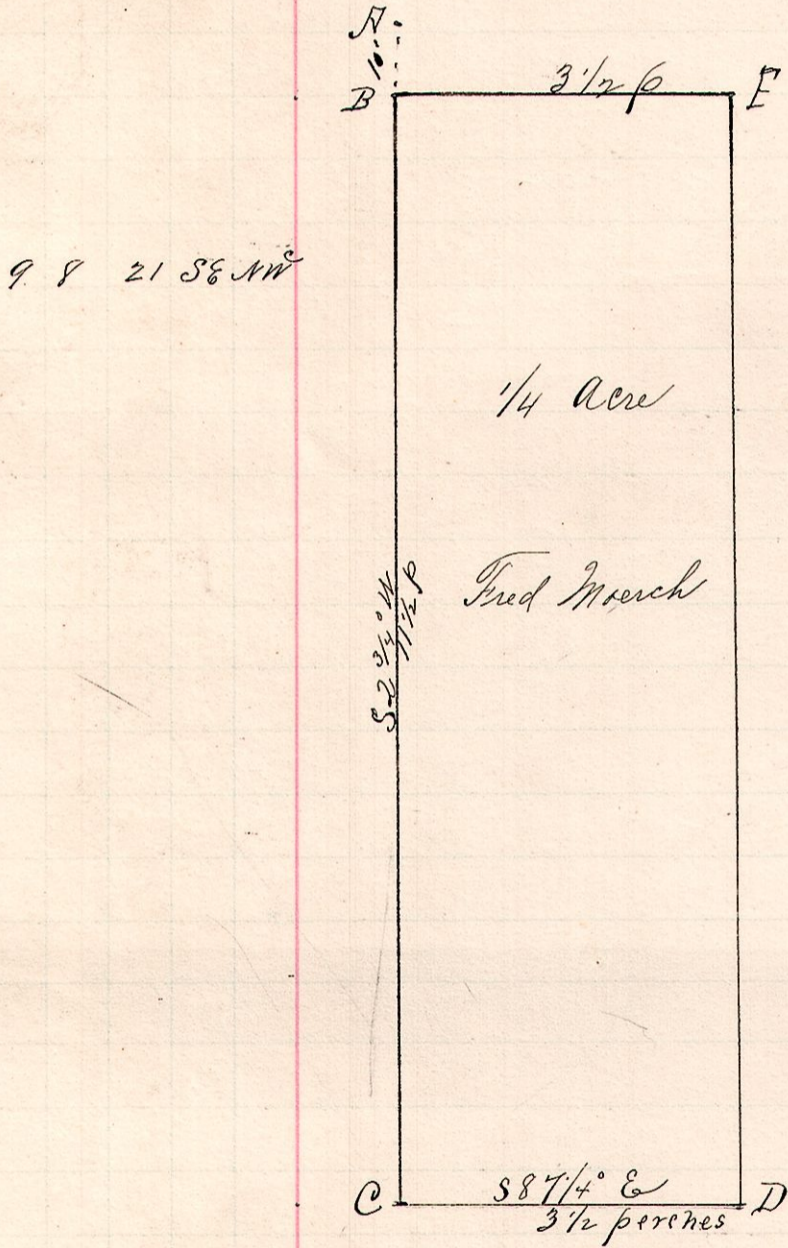


Notes
 "A", stone at NW SE cor Sec 21 Tp 8 R 9
 "B", post 30 ft S 2 3/4° W from A.
 "C", iron post in road the NW corner
 for Mrs. Hoops S 87 1/4° E 12 3/4 p. perches.
 "D", a post S 2 3/4° W 11 3/4 p. from C.
 E, " " S 87 1/4° E 13 1/2 p " D
 F, a post in the public road
 N 2 3/4° E 11 3/4 p. from E and
 S 87 1/4° E 13 1/2 p " C

June 21, 1892.

Surveyed the above for Phoebe Hoops, et al
 Frank H. Genet,
 County Surveyor.

No 416.



Notes
 "A", is a post in the public road, marked F
 in the above plat, Mrs. Hoops Northeast corner,
 "B", the place of beginning is a post 10 ft
 south 2 3/4 degrees west of A. - Moersch NW
 "C", a post S 2 3/4° W 11 1/2 p from B, - " SW corner
 "D" " " S 87 1/4° E 3 1/2 p " C - " SE "
 E, " " N 2 3/4° E 11 1/2 p " D - " NE "
 and S 87 1/4° E 3 1/2 p " B,

Surveyed the above for Fred Moersch, Chas.
 Ed. McKee, Trustees Baptist Church, Mrs. Phoebe Hoops, et al,
 June 21, 1892.

Frank H. Genet,
 Co. Surveyor.