

No. 421

- A, stone at southeast corner Fractional, Sec 9, T<sub>14</sub> R<sub>12</sub> on old Granville Treaty Line.
- B, a post in the public road on said Boundary Line S82°W 49 p from A.
- C, a post, the place of beginning N10°W 2 p from B.
- D, " N10°W 8 p from C.
- E, a post N67½°E 14 p from D.
- G, " S24°E 5 p 86 from E
- H, " S35°W 7 p from G
- and N75°E 10 p " C

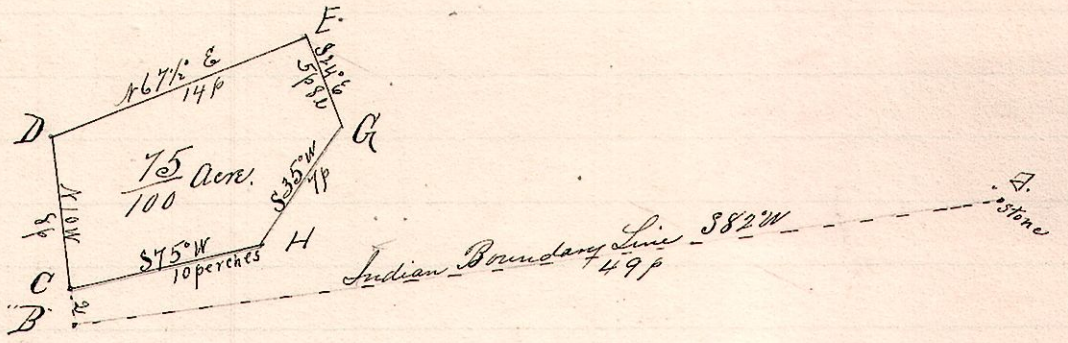
R 1/4 Sec

12 14 9 Frac. SE

Original Witness (stumps good)

W. oak 24 121 E 12

do 20 52 W 17

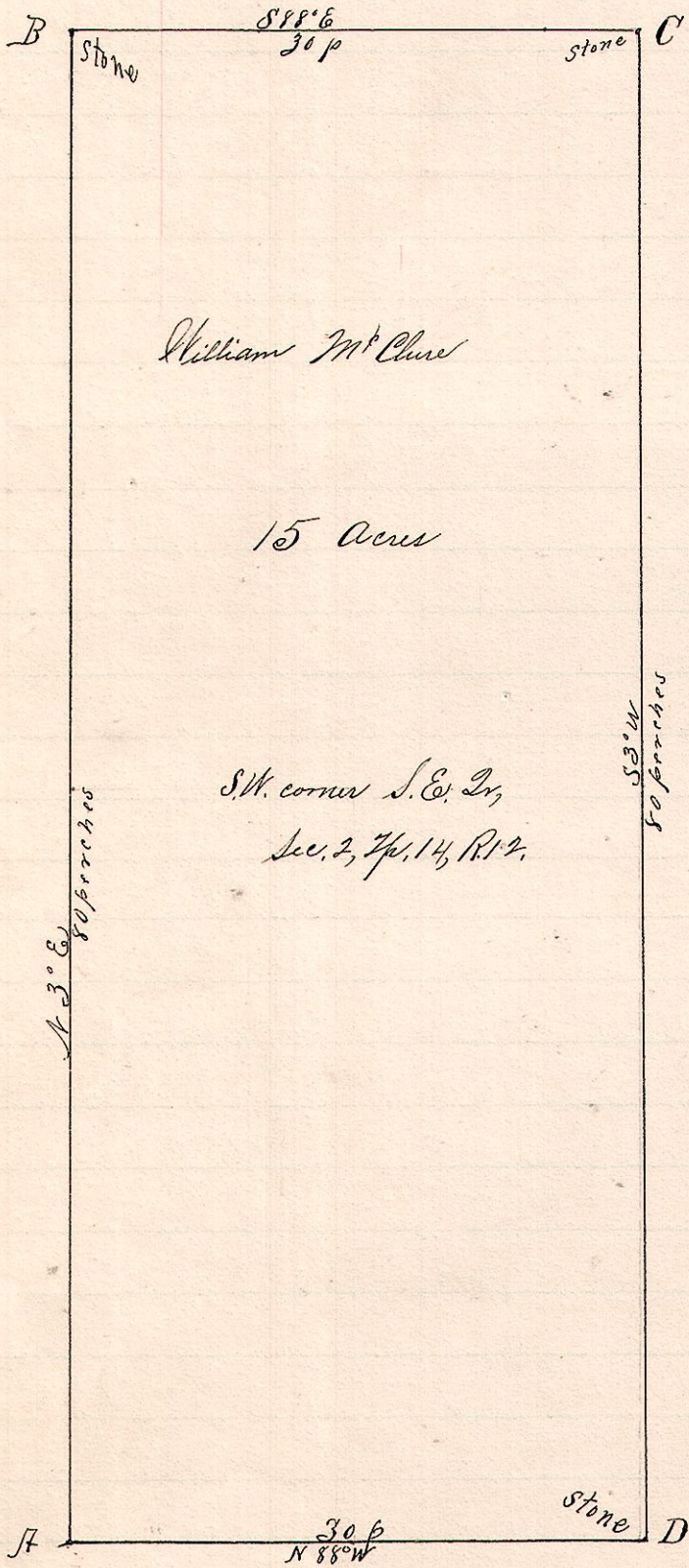


Surveyed the above for Scott Holderbaum

Frank H. Genet,  
County Surveyor.

June 28, 1892.

No 422



12 14 2 SE SW

- Notes -

"A" is the southwest corner of the southeast quarter of Sec. 2 T<sub>14</sub> R<sub>12</sub>  
 "B", a boulder on west line said quarter N13°E 80 p (Established by Edgar 1861)  
 "C", a stone S88°E 30 p from B.  
 "D" a stone S3°W 80 p " C.  
 and S88°E 30 p from A.  
 A.D. is along the public road.  
 Established the new corners at D and C, by placing sand stones.

The 15 acre is the reservation of W<sup>m</sup> M<sup>c</sup> Clure for himself in selling the 60 acre tract described as the W pt of the S E 2, sec 2 T<sub>14</sub> R<sub>12</sub> to Henry S. Hochstetler.

Chairmen

John N. Kilmer  
 Harry Fry

Surveyed the above for William M. Clure

and Henry S. Hochstetler to establish the lines BC and CD.

June 28, 1892.

Frank H. Genet,  
 Co. Surveyor.