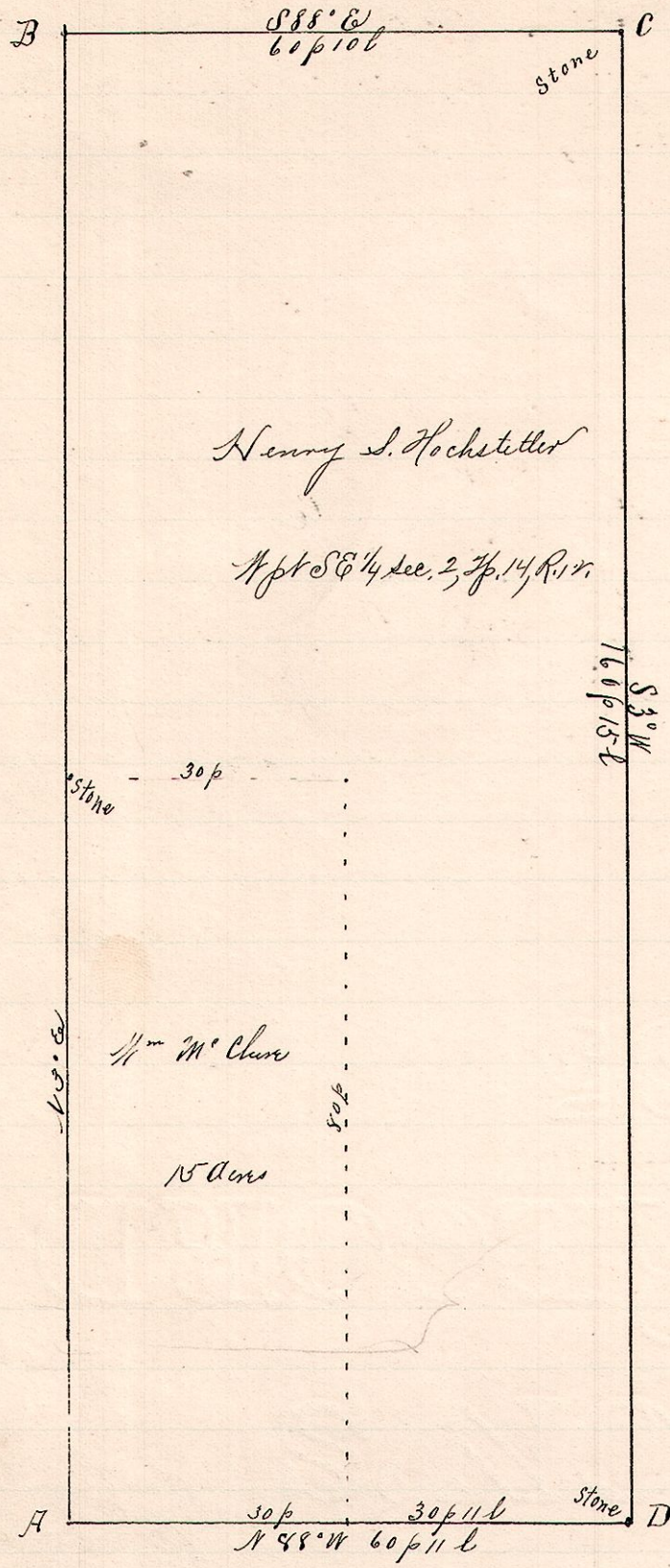


No. 423.

R 7p Sec 2
12 14 2 SE SWpt



Notes

"A," the southeast corner S.E. 2, sec. 2, Tp. 14, R. 12.
 "B," the northwest corner " " " "
 "C," a stone in the public road at the north east corner of the west part of said quarter 888° E 60 p 10 l from B.
 "D," a stone in a public road, at the southeast corner of said 1/4 pt said quarter S 3° W 160 p 15 l from C and 888° E 60 p 11 l from A.
 AD, is along the Massillon and Millersburg Road
 BC is along a public road.
 The line CD is the eastern limit of the 1/4 pt said quarter the line being well marked and the stone corner placed there at the time it was originally cut off the quarter.

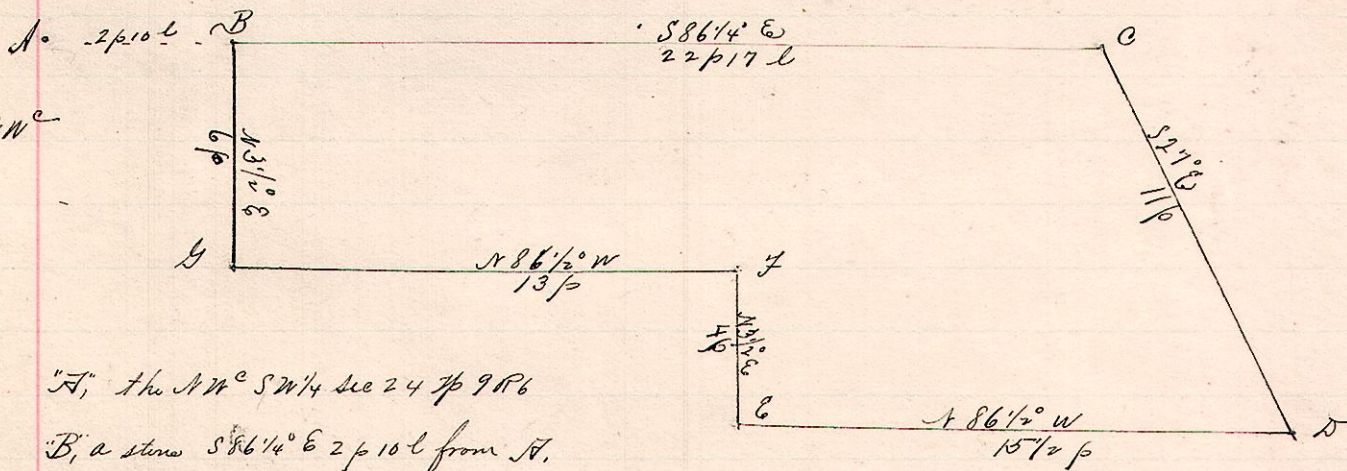
June 28, 1892.

Surveyed for Henry S. Hochstetler, et al,

Frank H. Genet,
County Surveyor.

No. 424

6 9 24 SW 1/4



"A," the NW 1/4 SW 1/4 sec 24 Tp 9 R 6
 "B," a stone 886 1/4° E 2 p 10 l from A.

June 30, 1892.

Surveyed the above for, F. M., A. J., U. G. Spring et al

Frank H. Genet
County Surveyor.