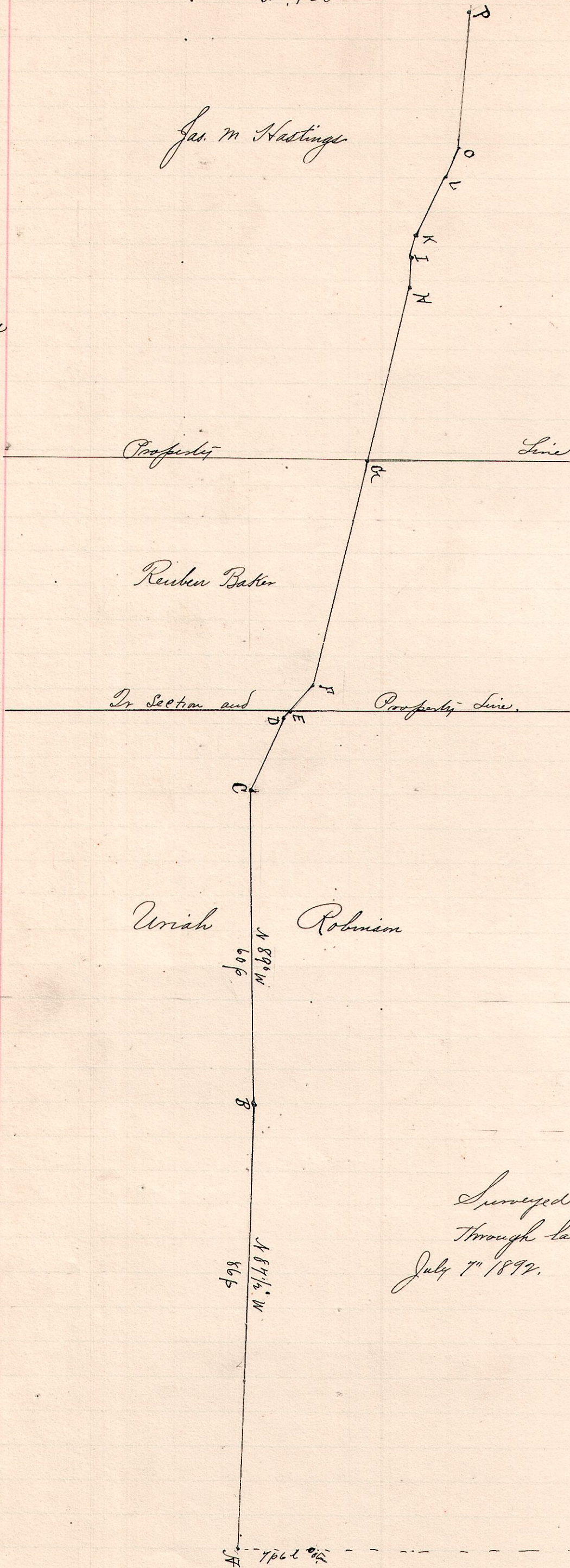


No. 425.

Jas. M. Hastings

R. 1/4 Sec 2v  
13 14 31 N. 1/2  
TR 332



Notes

"A" the place of beginning is a post in the road on the line between the sections 31<sup>nd</sup> & 32<sup>nd</sup> T<sup>14</sup> R<sup>13</sup> 7 p. 6 l. south of M. Haines' southwest corner of 60 acres  
 "B" a post N 87 1/2° W 86 rods.  
 "C" .. " N 89° W 60 perches.  
 "D" .. " N 65° W 15 1/2 "  
 witnessed by a Hickory 1858 1/2° W 40 c  
 "E" a post on line between southeast and southwest quarters of section 31 T<sup>14</sup> R<sup>13</sup> the line between lands of Uriah Robinson and R. Baker N 46 1/2° W 43 links from D.  
 "F" a post N 46 1/2° W 6 1/2 p  
 "G" .. " on line between R. Baker & Jas. M. Hastings N 46 1/2° W 44 1/2 p.  
 "H" a post N 76 1/2° W 34 p.  
 "I" a post N 87° W 6 p.  
 "K" .. " N 75° W 4 p.  
 "L" .. " N 63° W 8 p 18 c  
 "O" .. " N 57 1/2° W 6 p  
 "P" the terminus of proposed Tp Road a post in old road N 43° W 26 p 8 c from "O" and witnessed by the northwest corner of NW abutment of bridge at Jacob 35° W 8 rods and Hoak 8 N 63 1/2° E 90 c

Surveyed to above described Tp. Road through lands of Robinson, Baker & Hastings, July 7<sup>th</sup> 1892.

Frank H. Grady,  
County Surveyor,  
Holmes Co.,  
O.