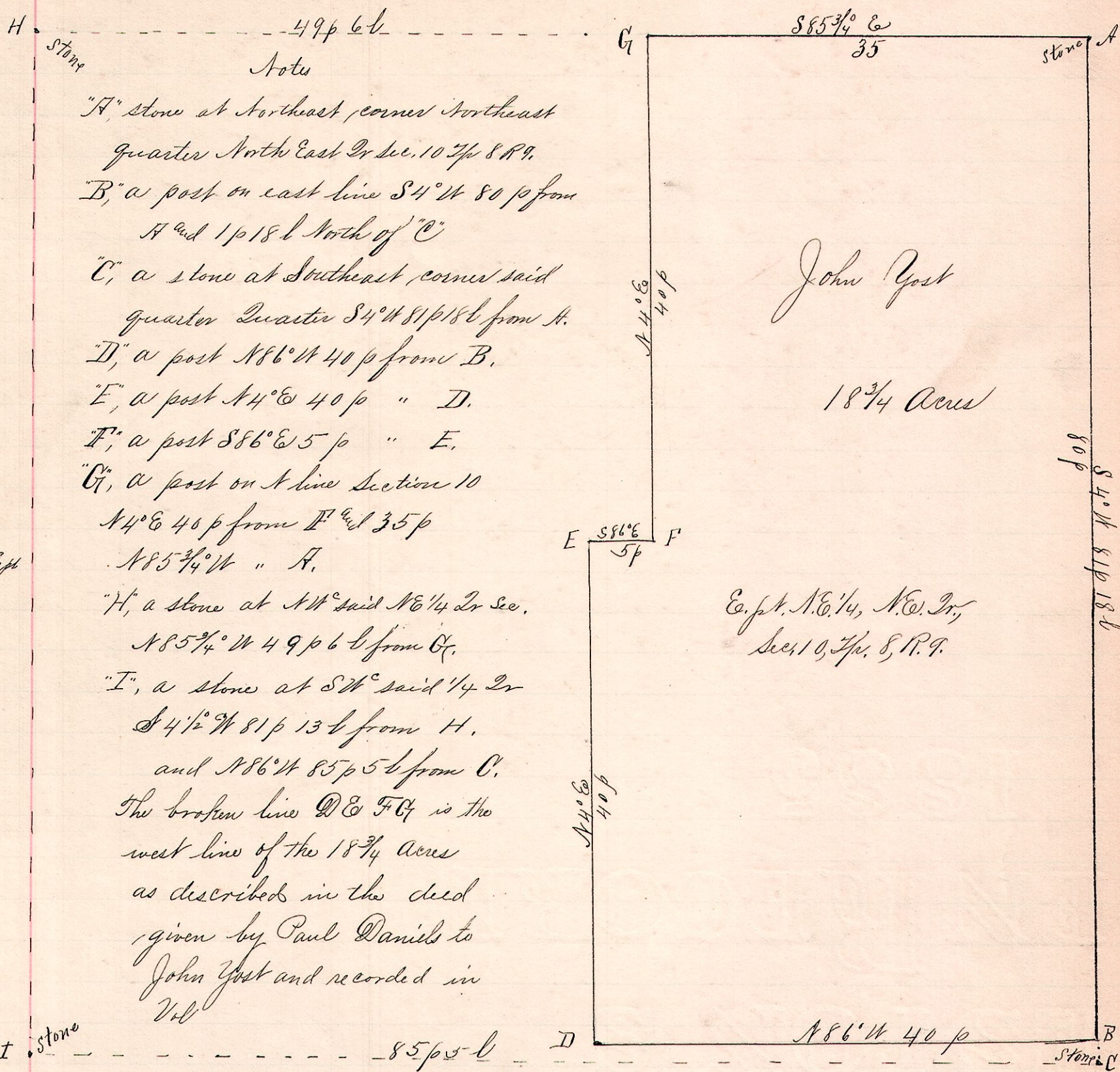


No. 428



Notes
 "A" stone at Northeast, corner Northeast quarter North East 2r sec. 10 T. 8 R. 9.
 "B" a post on east line S 41° W 80 p from A and 1 p 18 l North of "C"
 "C" a stone at Southeast, corner said quarter Quarter S 41° W 81 p 18 l from A.
 "D" a post N 86° W 40 p from B.
 "E" a post N 41° E 40 p " D.
 "F" a post S 86° E 5 p " E.
 "G" a post on A line Section 10 N 41° E 40 p from F and 35 p N 85 3/4° W " A.
 "H" a stone at NW said N.E. 1/4 2r sec. N 85 3/4° W 49 p 6 l from G.
 "I" a stone at SW said 1/4 2r S 41 1/2° W 81 p 13 l from H. and N 86° W 85 p 5 l from C.
 The broken line D E F G is the west line of the 18 3/4 Acres as described in the deed given by Paul Daniels to John Yost and recorded in Vol.

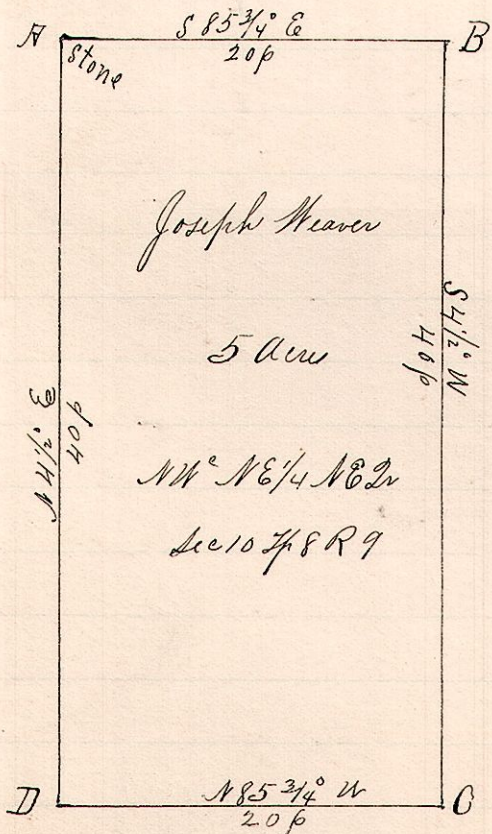
R T. 8 Sec 10 N.E. 1/4

Surveyed for John Yost and Paul Daniels

July 13, 1892.

Frank H. Lusk, County Surveyor.

No. 429



- Notes -

"A" a stone at N.W. N.E. 1/4, N.E. 2r, Sec. 10, T. 8, R. 9.
 "B" a post on North line said section 10, S 85 3/4° E 20 p from A.
 "C" a post S 41 1/2° W 40 p. from B.
 "D" a post on west line said 1/4 Quarter section N 85 3/4° W 20 p. from "C" and S 41 1/2° W 40 p. from A
 Chaimen
 William Parsons and Robert Church,
 Marker, - Charles Jones.

Surveyed the above for Joseph Weaver, et al.

July 13, 1892.

Frank H. Lusk, County Surveyor.

9 8 10 N.E. N.E.