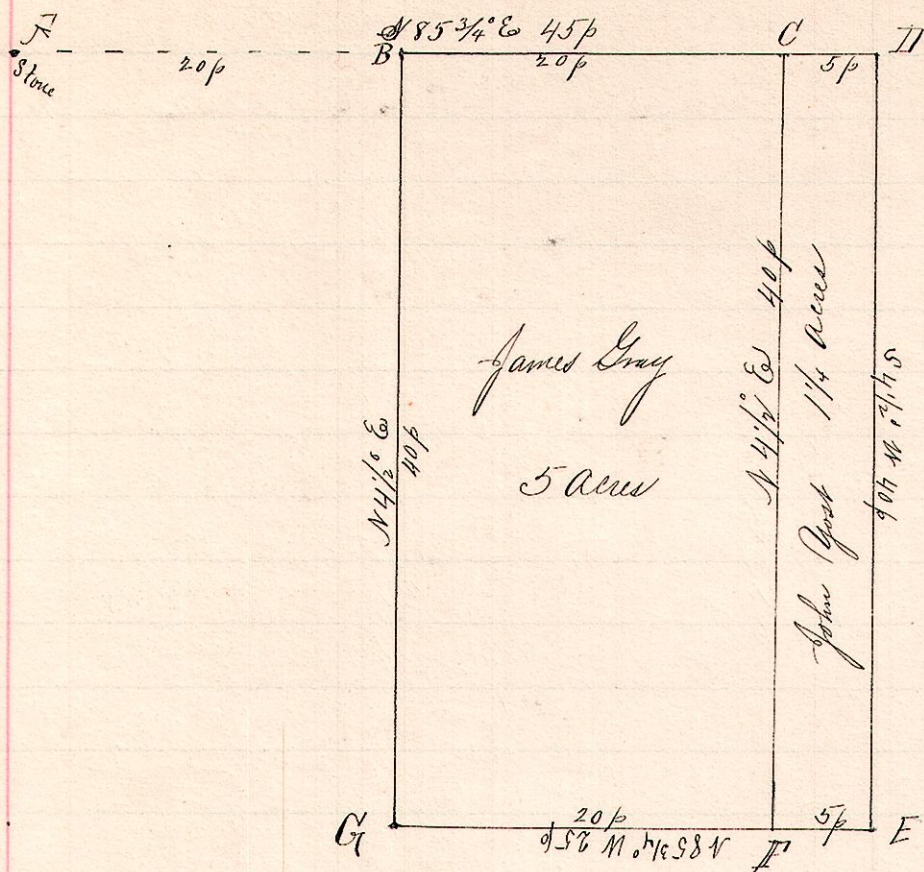


No. 430.

R 7th Sec 2^d Pt
9 8 10 N⁶ N⁶



Chainman, - R. L. Church
Marker, - Charles Jones,

July 13, 1892.

Surveyed the above for James Gray and John Post

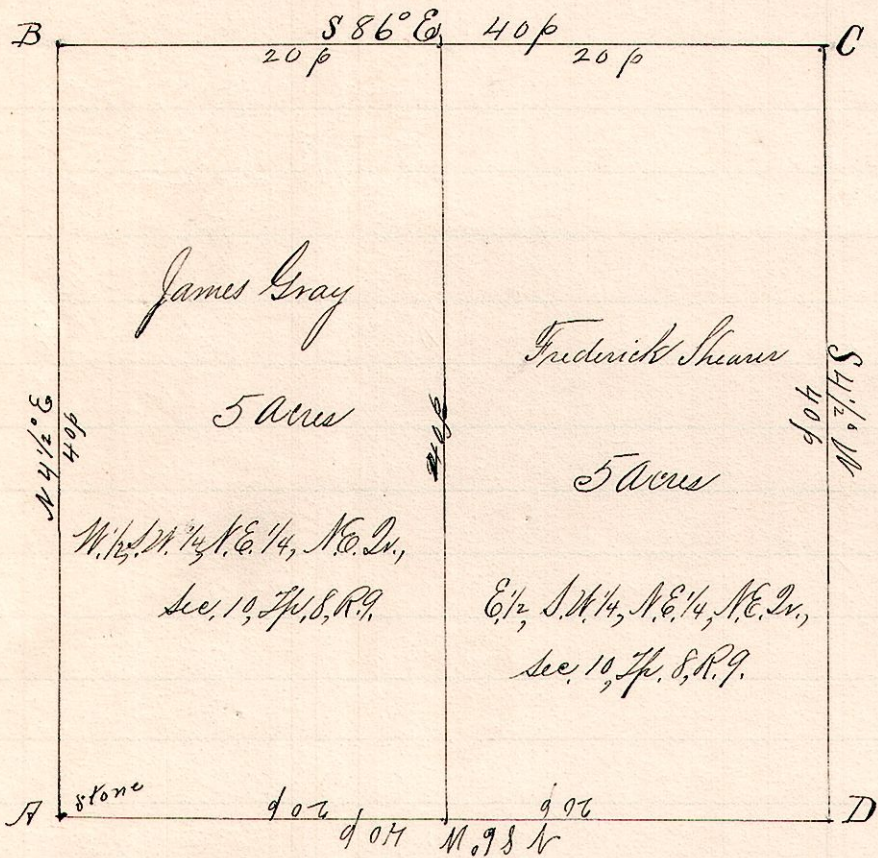
Frank H. Genet,
County Surveyor.

Notes

- "A", a stone at the northwest corner of the northeast quarter of the NE Quarter Sec 10 T⁸ P⁸ R⁹.
- "B", a post on the north line of said section, the place of beginning, S 85 3/4 E 20 p from A.
- "C", a post on said north line S 85 3/4 E 20 p from B.
- "D", a post on said line S 85 3/4 E 5 p.
- "E", a post S 4 1/2 W 40 p from D.
- "F", " " N 85 3/4 W 5 p from E and S 4 1/2 W 40 p from C.
- "G", a post N 85 3/4 W 20 p from F, 25 p from E, and 40 p S 4 1/2 W from B.

No. 431.

R 7th Sec 2^d
9 8 10 N⁶ N⁶



July 13, 1892.

Surveyed the above for James Gray and Fred. Shearn,

Frank H. Genet,
County Surveyor.

Notes.

- "A" stone at S.W. 1/4 N.E. 1/4 N.E. 2^d, section 10, T⁸ P⁸ R⁹.
 - "B", a post on west line N 4 1/2 E 40 p
 - "C", a post S 86 E 40 p
 - "D", a post on south line said 1/4 Sec. section 10 S 4 1/2 W 40 p from C and S 86 W 40 p from A.
- James Gray has the 1/2 of the SW 1/4 of the NE 1/4 N.E. 2^d, Sec 10 Fred. Shearn has the E 1/2 of the above described tract each containing 5 Acres.