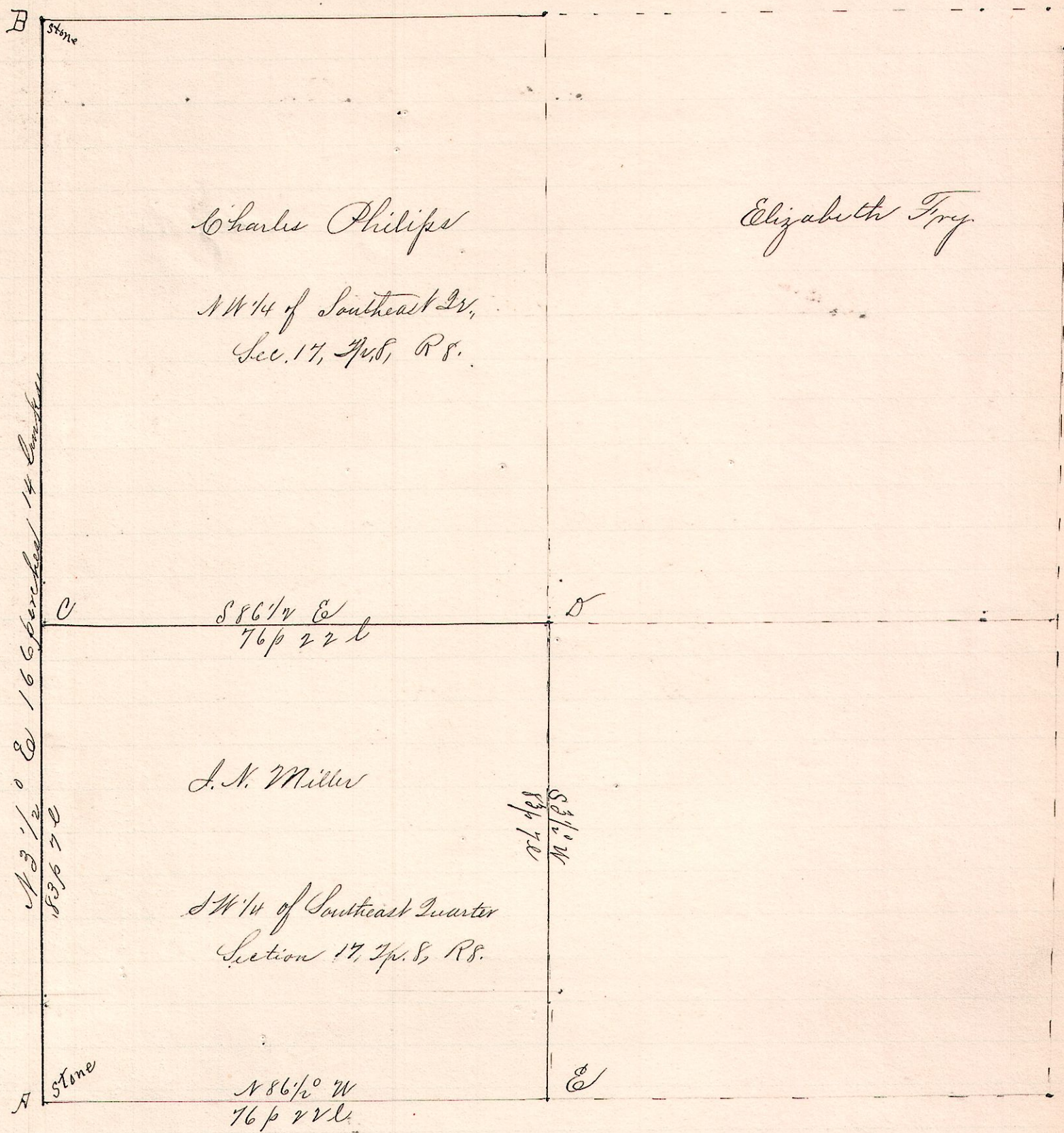


No. 441

R 7th Sec 2
 8 8 17 SE SM



Notes

- "A," a stone at southwest corner southwest quarter sec. 17, T. 8, R. 8.
- "B," a stone at northwest corner " " " " "
- "C," a post on west line said Dr; N 3 1/2° E 83 p 70 from A.
- "D," a post S 86 1/2° E 76 p 22 l from C.
- "E," a post on south line of said quarter section S 3 1/2° W 83 p 70 from D and S 86 1/2° E 76 p 22 l from A.

Surveyed the above for J. N. Miller, Chas Phillips et al. - Channer Charles Phillips Geo. Fry; Master-Squire Curdys August 30 1892.

Frank A. Genet,
 County Surveyor.