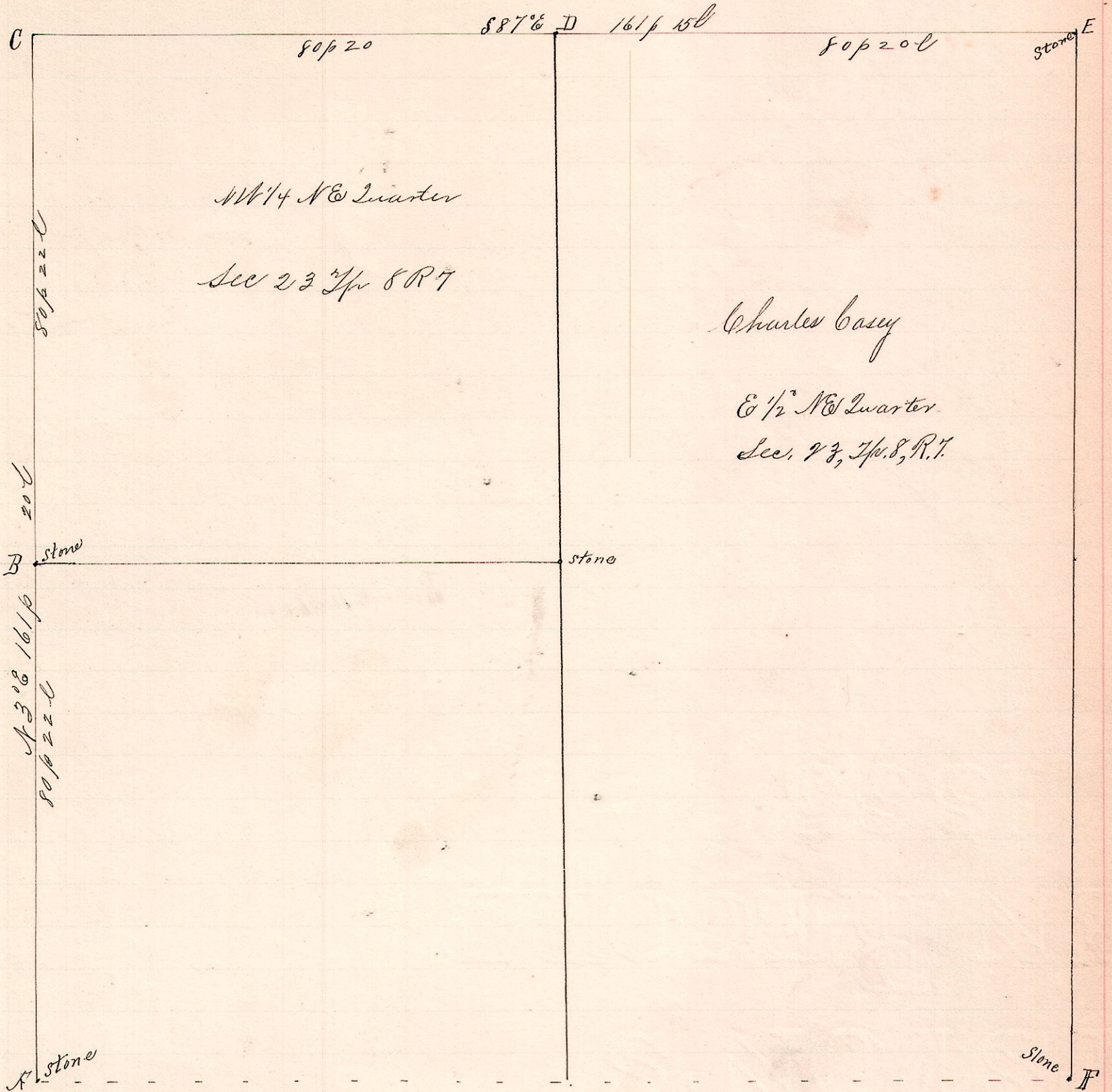


No. 443



R 7p Sec 23
7 8 23 16 NW

NW 1/4 NE Quarter
Sec 23 T4p 8 R 7

Charles Casey
E 1/2 NE Quarter
Sec. 23, T4p. 8, R. 7.

Notes.

- "A", a stone at the southwest corner of the northeast 1/4 sec 23, T4p 8 R 7.
- "B", planted a stone on west line N 3° E 80 p 22 l from A.
- "D", a stake at northwest corner said NE 1/4 N 3° E 161 p 20 l from A.
- "D", a post on north line said quarter S 87° E 80 p 20 l from C.
- "E", a line stone at northeast corner said quarter 80 p 20 l S 87° E from D.
- "F", a stone at southeast corner said quarter S 87° W 161 p 13 l from E.

Surveyed the above for P.M. Alvin Graham
Jacob G. Lowe, James Carpenter, Charles Casey, et al,
Sept. 21, 1899.

Franklin G. Galt
County Surveyor.