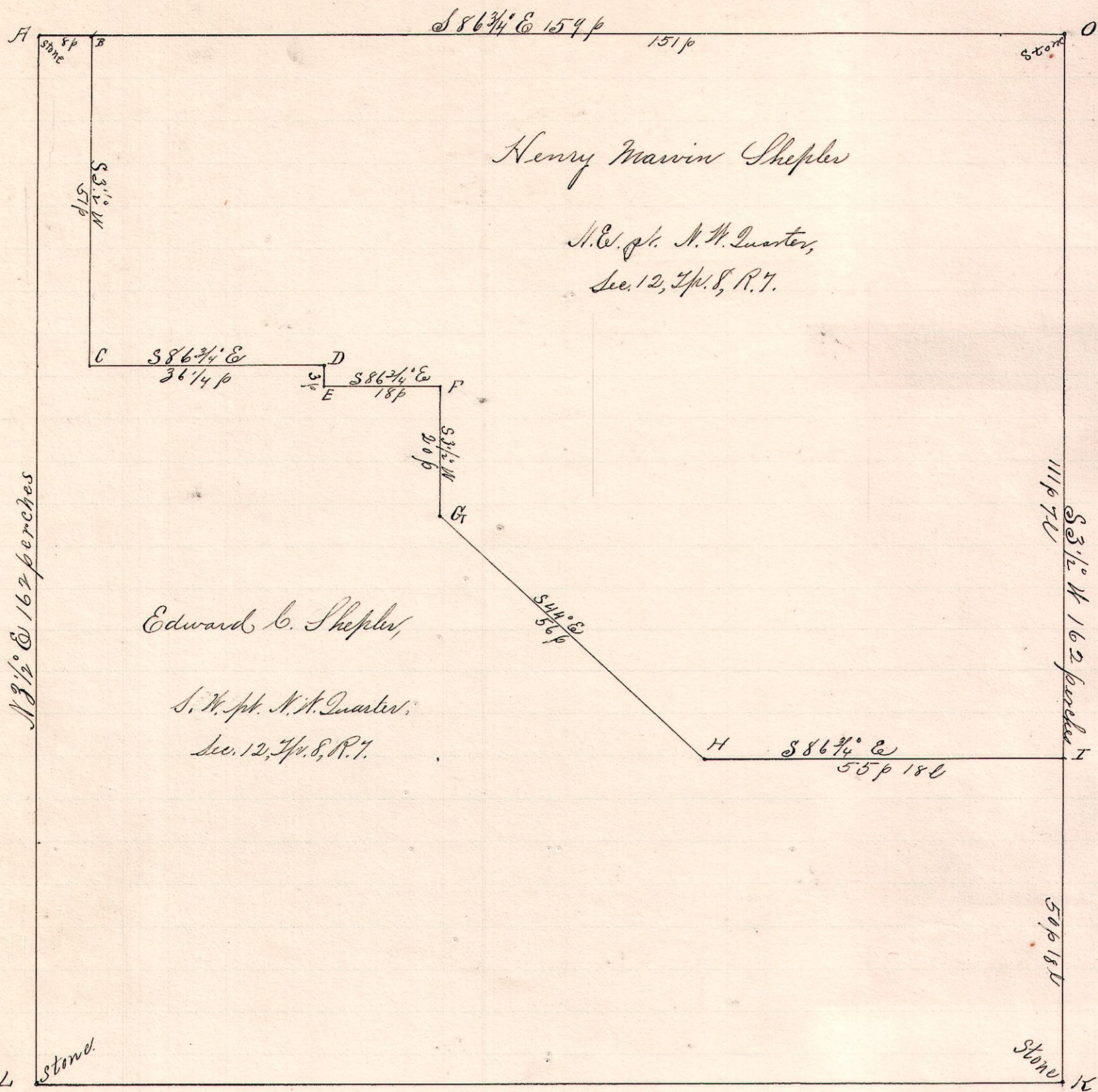


No. 450.



R 7th Sec 21  
7 8 12 NW

N 3 1/2 E 162 perches

S 3 1/2 W 162 perches

Notes

- "A" is a stone at the northwest corner of the northwest quarter Sec. 12, Twp. 8, R. 7.
- "B", a post on north line said quarter S 86 3/4 E 8 p. from A.
- "C", a post S 3 1/2 W 51 p from B.
- "D", a post in public road S 86 3/4 E. 36 1/4 p from C.
- "E" " " " " S 3 1/2 W 3 p from D.
- "F", a post S 86 3/4 E 18 p. from E.
- "G", " " S 3 1/2 W 20 p from F.
- "H", " " S 44 E 56 p " G.
- "I", a post on east line S 86 3/4 E 55 p 18 l from H.
- "K", a stone at SE corner of quarter section S 3 1/2 W 50 p 18 l from I.
- "L" a stone at SW corner S 3 1/2 W 162 p from A
- "O", a stone at NE corner S 86 3/4 E 151 p from A  
N 3 1/2 E 111 p 7 l from I and 162 p from K  
also S 86 3/4 E 151 p from B.

Surveyed the above in amicable partition  
for Henry Marvin Shepler and Edward C. Shepler.  
Nov. 21, 1892.

Frank H. Genet  
County Surveyor.