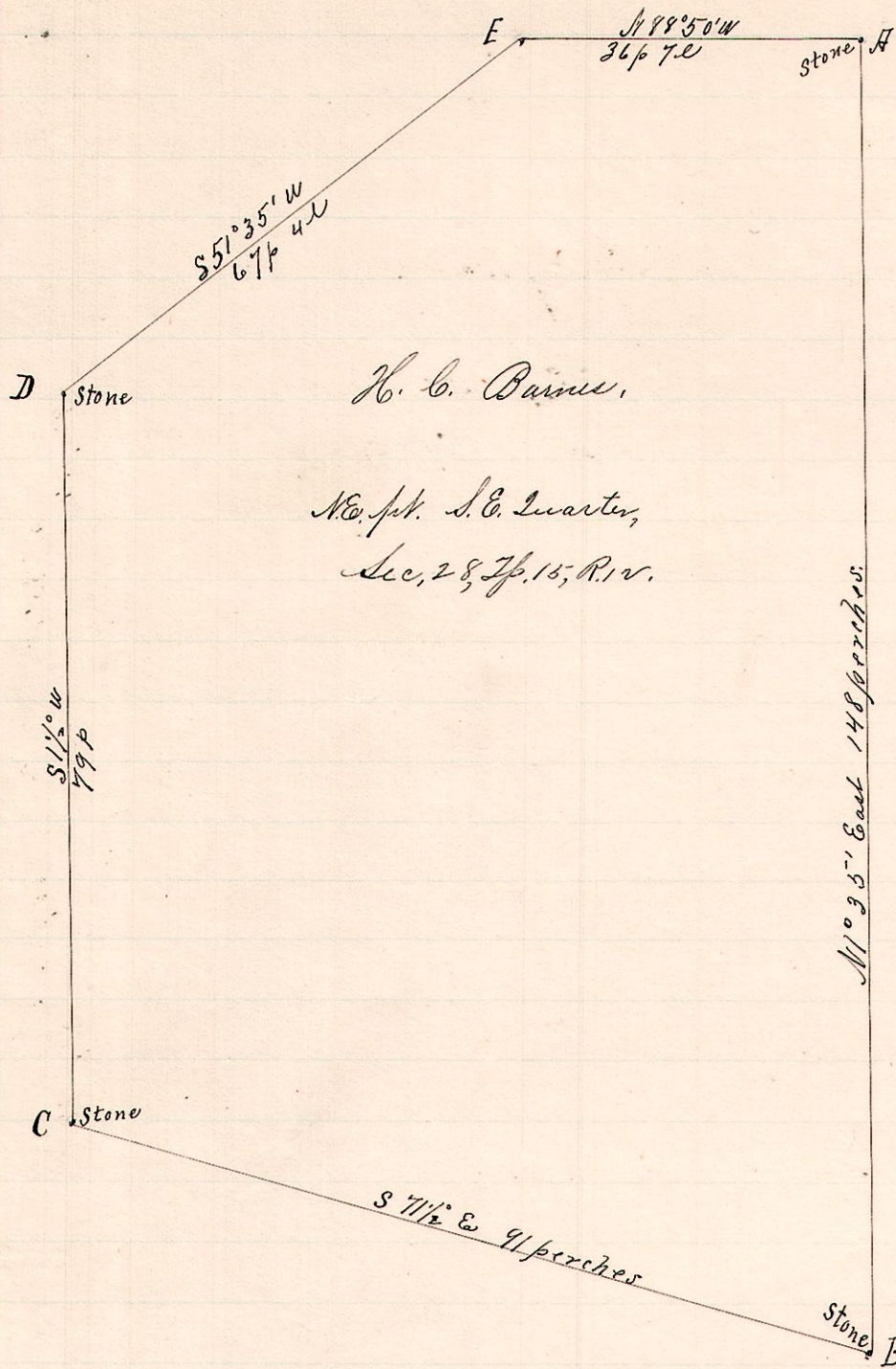


27 S 2
12 15 28 SE

No. 468.



H. C. Barnes.

N.E. pt. S.E. Quarter,
Sec. 28, T_{p.} 15, R. 12.

Notes.

"A," a stone at the northeast corner of the southeast quarter of Section 28, T_{p.} 15, R. 12.

"E," a post on south line of said quarter N 88° 50' W 36 p 7 l from H.

"D," a stone at side of the road S 51° 35' W 67 p 4 l from E.

"C," a stone S 1 1/2° W 79 p from D.

"B," a stone on the east line of said quarter S 7 1/2° E 91 p from C and S 1° 35' W 148 perches from H.

Witness to B

Elm to N 88 1/2° W 11 1/2 links.

— Chain men. —

Warner Spencer

Samuel B. Spencer

— Muckers. —

Victor Genet

John Wolgamut.

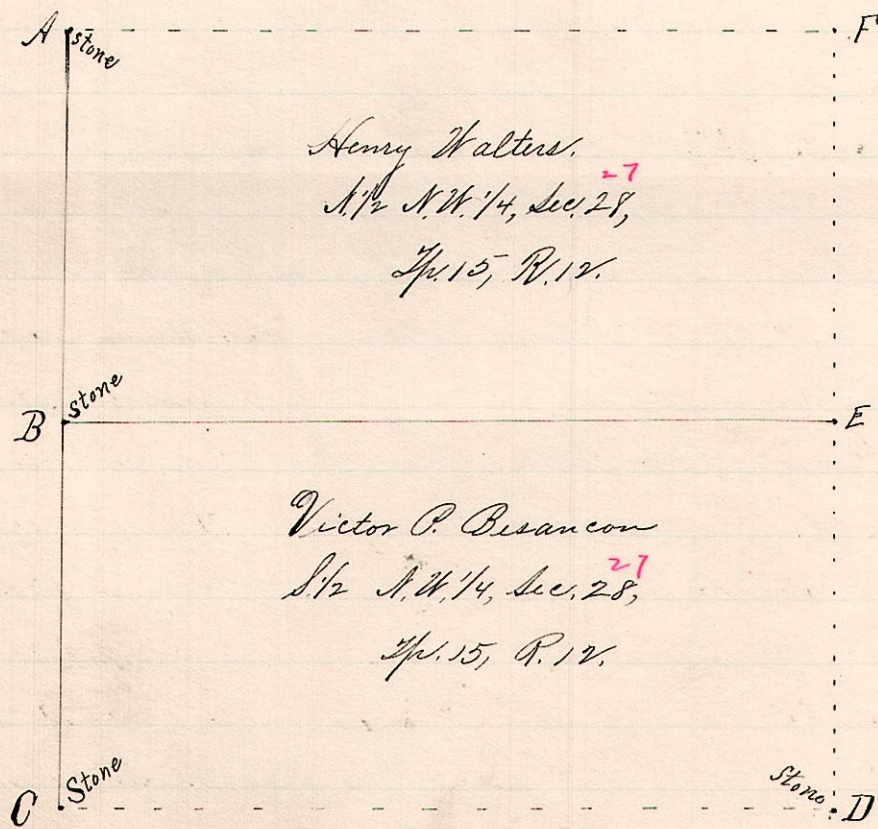
Surveyed for H. C. Barnes

H. R. Leper, James Ross et al

under notice of Legal Survey given by Amos C. Sturken Dec, 10, 1892.
Surveyed Jan 24, 1893.

Frank H. Genet,
Co. Surveyor.

No. 469.



Henry Walters.
N 1/2 N.W. 1/4, Sec. 28,
T_{p.} 15, R. 12.

Victor P. Besancon
S 1/2 N.W. 1/4, Sec. 28,
T_{p.} 15, R. 12.

Notes.

"A," a stone on the county line at the northwest corner of the northwest quarter of Sec. 27, T_{p.} 15, R. 12.

"B," a stone on west line of said 2_{s.} the half 2_{s.} corner S 1° 35' W 80 p 17 l from H.

"C," a stone at southwest corner of said quarter S 1° 35' W 80 p 17 l from B, and 161 p 9 l from H.

"D," a stone at S.E. corner said 2_{s.}

F, the northeast corner " "

E, the East 1/2 2_{s.} corner.

Surveyed the above for Victor P. Besancon, Henry Walters, et al, in Legal Survey of Jan 24, 1893.

Frank H. Genet,
County Surveyor,
Holmes Co. O.

27
12 15 28 NW