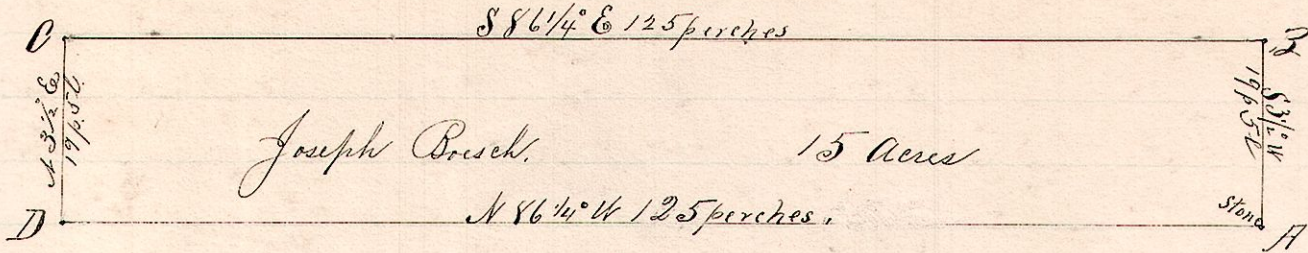


No. 470.

R. Tp. 2. Tp. Lot  
8 9 3 34 86



Notes.

"A", the southeast corner of Lot 34 of the 3d 2. Tp. of Tp. 9, R8. was found from the original White Oak 10 s 7 E 27 which was recently cut; planted stone corner and took as new witness a B oak 12 N 19 E 2 links.

"D", a post on south line N 86 1/4 W 125 perches from "A".

"C", a post N 3 1/2 E 19 p 5 l from "D".

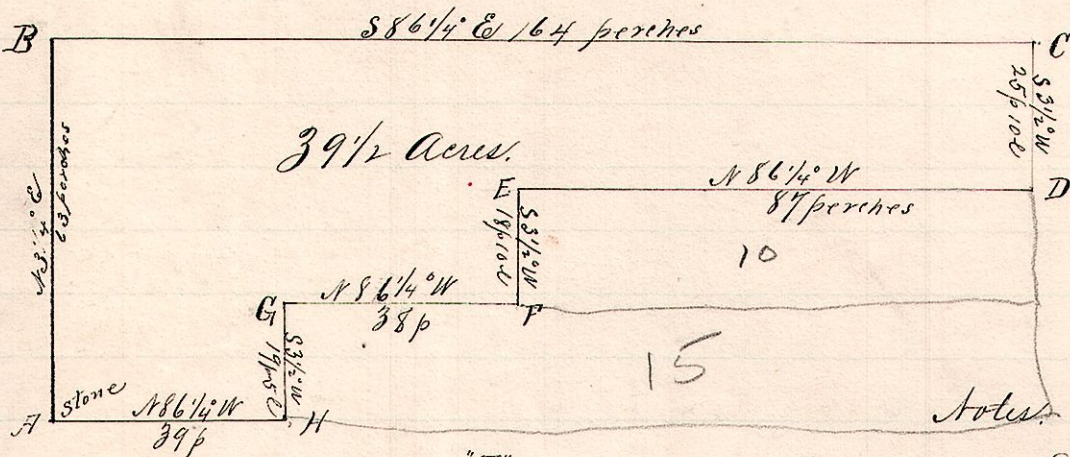
"B", a post on East line S 86 1/4 E 125 p from "C" and N 3 1/2 E 19 p 5 l from "A".

Surveyed the above for Joseph Boesch and Manie Marrett  
Feb. 16, 1893.

Frank H. Genet,  
County Surveyor.

No. 471.

8 9 3d 34 SW



"A", a stone at southwest corner Lot 34 of 3d 2. Tp. 9 R8.

"B", a post on west line said Lot 34, N 3 1/4 E 63 perches from "A".

"C", a post on east line, S 86 1/4 E 164 perches from "B".

"D", a post on said east line S 3 1/2 W 25 p 10 l from "C".

"E", a post N 86 1/4 W 87 p from "D".

"F", a post S 3 1/2 W 18 p 10 l "E".

"G", a post N 86 1/4 W 38 p "F".

"H", a post on south line S 3 1/2 W 19 p 5 l from "G" and S 86 1/4 E 39 p from "A".

Witness to B, - Sugar 8 S 76 E 1/2 links and Sugar 4 S 30 1/2 W 2 3/4 links

"C", - Hickory 4 N 25 E 3 links

"D", - White Oak 10 N 69 1/2 W 14 1/2 links

Chairmen, - William Graff, Hiram Gouver. (sworn) Others present and assisting, - Frederick A. Kinsey, Manie Marrett, Christian Jeller, Joseph Boesch.

Surveyed the above for Frederick Kinsey, Christian Jeller, Manie Marrett, Joseph Boesch and others  
Feb. 16 and 17, 1893.

Frank H. Genet  
County Surveyor.