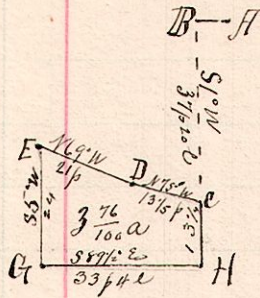


R 2^d Sec 2^d R 15
15 20 32 NW 1/4

No 488.

Notes.



"A," the northeast corner of the northwest quarter of Sec. 32, T. 20 R. 15
 "B," a post 4 1/2 perches west of A.
 "C," the place of beginning, a post S 1° W 37 1/2 p from B.
 "D," a post N 75° W 13 p 5 l from C.
 "E," a post S 69° W 21 p from D
 G, a post in center of bridge, on State Road S 3° W 24 p from E.
 "H," a post in said Road S 89 1/2° E 33 p 4 l from G and S 1° W 13 p 5 l from C.

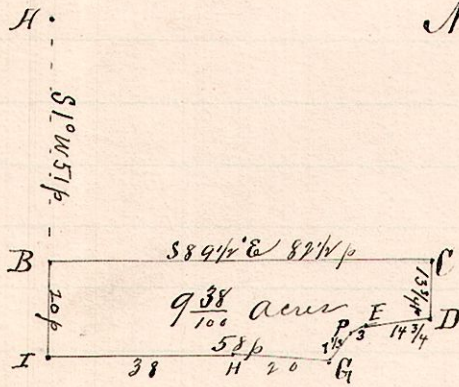
Surveyed the above for W^m F. Fulmer and M. A. Priest, Ex. Jno Priest, deceased.
 April 6, 1893.

Frank H. Genet,
 County Surveyor.

15 20 30 NW 1/4

No. 489.

Notes.



"A," the northwest corner, northeast quarter Sec. 32, T. 20 R. 15
 "B," the place of beginning, a post on west line of said Quarter in the State Road, S 1° W 57 perches from A.
 "C," a post in said road S 89 1/2° E 82 1/2 perches from B.
 "D," a post in a public road 13 p 20 l south of C.
 "E," a post in said road, S 87° W 14 p, 20 l from D
 "G," " " " " S 71° W 3 p from E.
 "H," " " " " S 46° W 7 p 8 l " G.
 "I," a post 20 p south of B, and 58 p west of G.

G & H I is the north
 line of Rightaway for the
 P.F. & C. R.R.

Surveyed for M. A. Priest, Executor of John Priest, deceased.

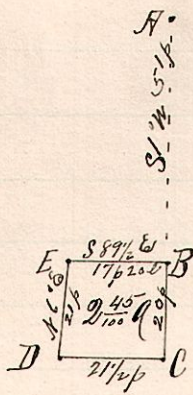
April 6, 1893.

Frank H. Genet,
 Co. Surveyor.

15 20 32 NW 1/4

No. 490.

Notes.



"A," the northeast corner of the Northwest Quarter Sec. 32, T. 20, R. 15.
 "B," the place of beginning, a post S 1° W 51 p from A.
 "C," a post on north line P.F. & C. R.R., 20 p S 1° W from B.
 "D," a post in Private road, on north line said RR 21 1/2 p west of C
 "E," a post N 6° E 21 p from D and N 88 1/2° W 17 p 20 l from B.
 CD, along Rail Road; DE, private Road; EB, State Road

Surveyed for M. A. Priest, Executor of John Priest, deceased.

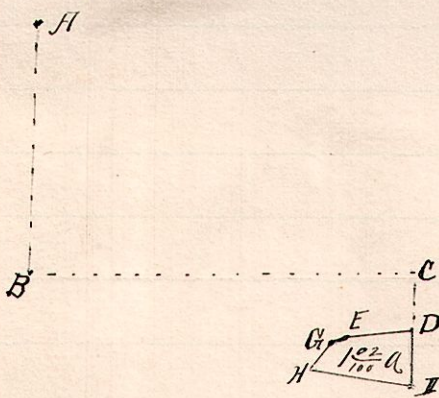
April 7, 1893.

Frank H. Genet,
 Co. Surveyor.

15 20 32 NE 1/4

No. 491.

Notes.



"A," the northwest corner N.E. 1/4 Sec. 32, T. 20, R. 15.
 "B," a post on west line, in State Road S 1° W 51 p from A.
 "C," a post in said road S 89 1/2° E 82 1/2 p from B.
 "D," the place of beginning a post in old road 13 3/4 p South of C
 "E," a post in said road S 87° W 14 p 20 l from D.
 "G," " " " " S 71° W 3 p from E.
 "H," " " " " S 46° W 7 p 8 l from G.
 "I," a post 23 1/2 p east of H and 11 p 6 l south of D.

H I, North line of P.F. & C. R.R.
 D E G H, along center of Public road.

Surveyed for D. Sentel and M. A. Priest, Executor of John Priest, deceased.

April 7th, 1893.

Frank H. Genet,
 Co. Surveyor.