

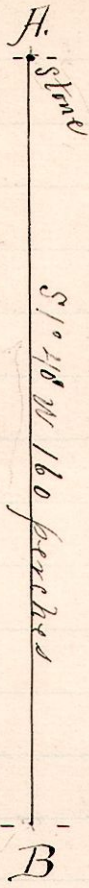
No. 497.

R 7p S 2  
1313 3 NW

NW Quarter Section 3  
Tp 13 Range 13

Peter Painter.

N. W. Dr. Sec. 4,  
Tp. 13, R. 13.



Notes

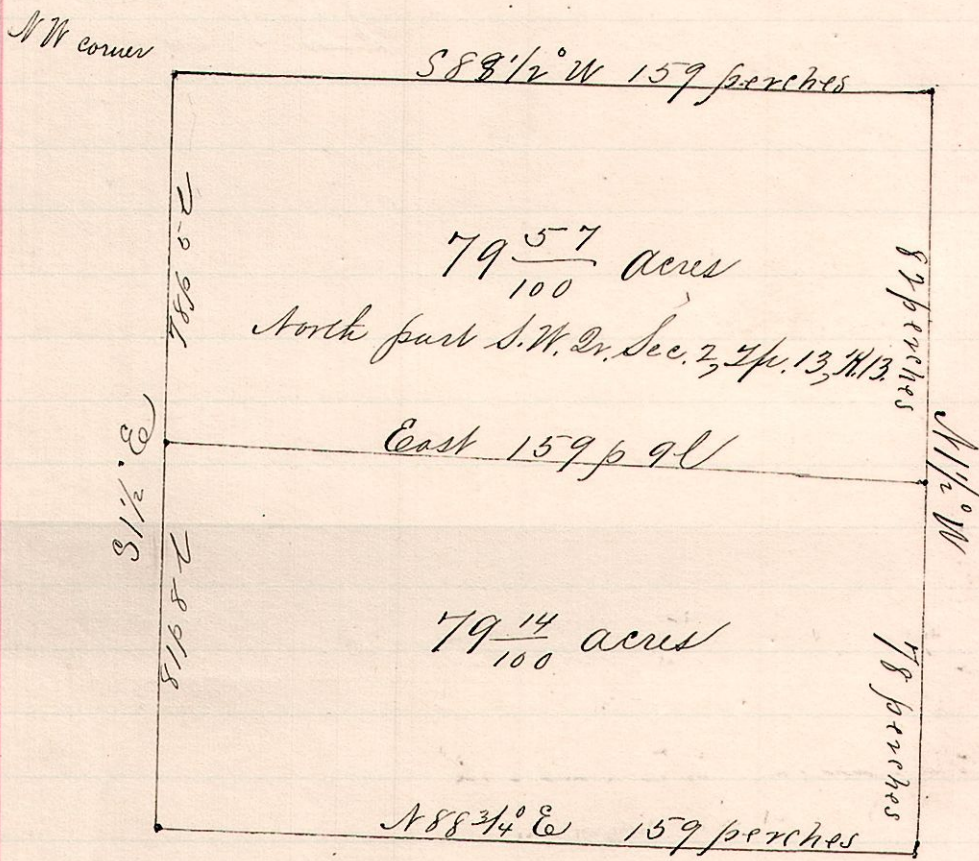
"H" stone at the northeast corner of the northeast quarter section 2 Tp 13 R 13.  
 "B" the southeast corner said quarter in center of road leading from Holmesville to Fredericksburg  
 S 1° 40' W 160 p from H.  
 Orig. White Oak 12  
 S 46° W 50 l at A good

Surveyed for William A Painter and Thomas Eversly  
April 21, 1896.

Frank H. Gault,  
County Surveyor.

No. 498.

R 7 Sec 2  
1313 4 SW



I hereby certify the above to be a correct copy of a plat of Samuel Robinson of June 1849; the above is plattd by request of William A. Painter and Thomas Eversly March 20 1893.

Frank H. Gault,  
County Surveyor.