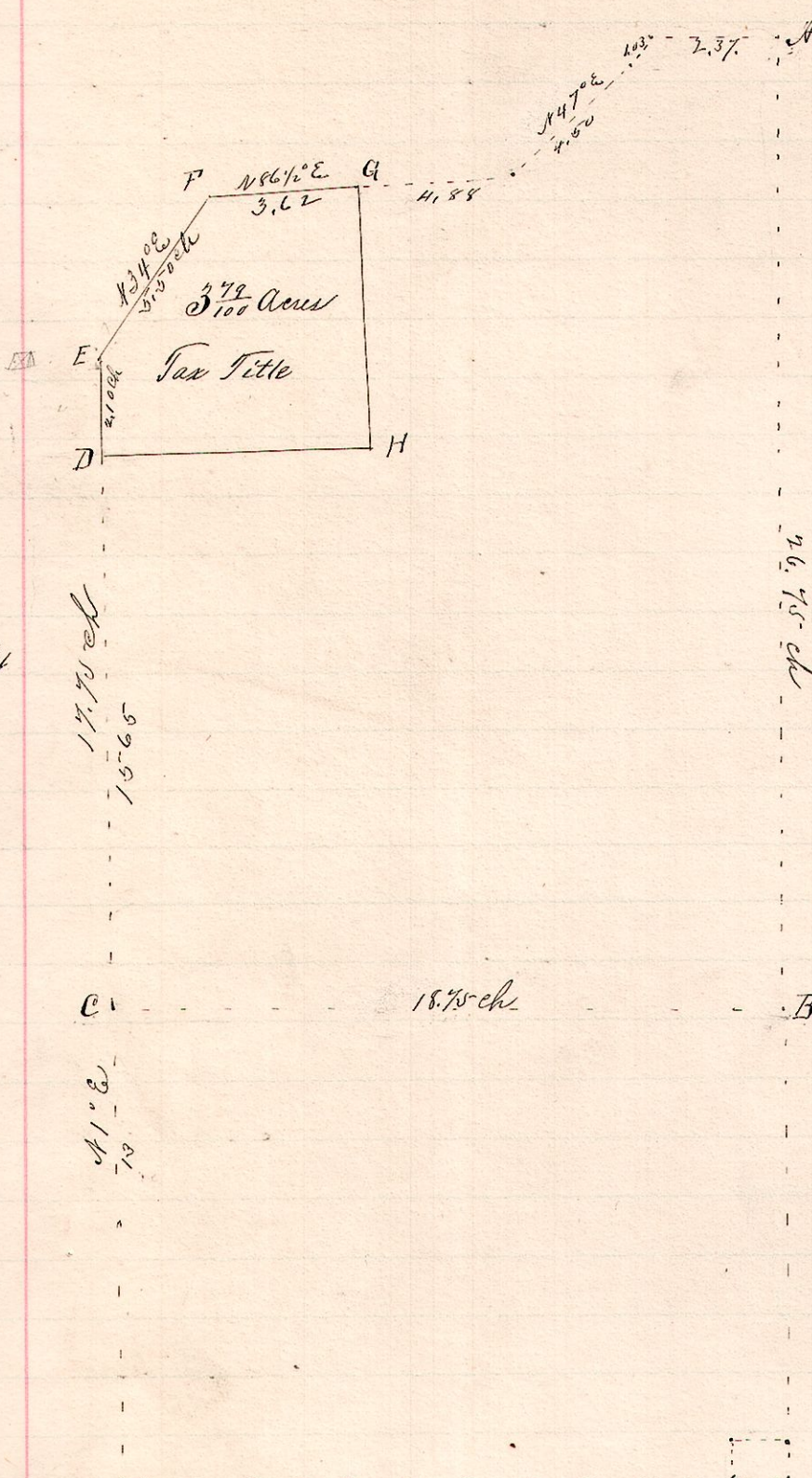


No. 499.



R 7 1/2 Sec 2
13 13 2 N & Pt

Notes

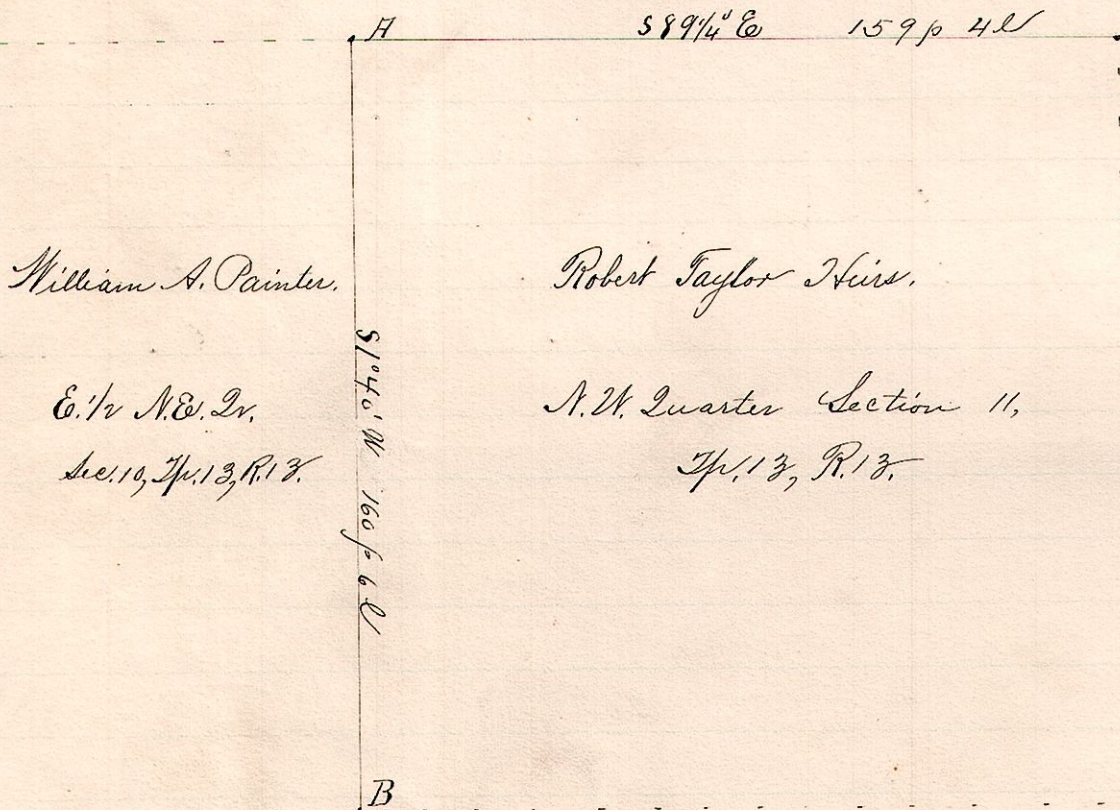
- "A," stow at the northeast corner of the northeast quarter of Section 2 7/8 13 T13.
- "B," a post on the east line of said quarter 26.75 ch south of A.
- "C," a post 18.75 ch west of B.
- "D," the place of beginning of the Tax title a post N 1° E 15.65 ch from C.
- "E," a post N 1° E 2.10 ch from D.
- "F," " N 34° E 5.50 ch " E
- "G," " N 86 1/2° E 3.62 ch " F
- "H," a post S 1° W 6.69 ch from G and S 89° E 6.69 ch " D.

I hereby certify the above to be a correct plat and description of tax title as surveyed for N.B. Catter, April 1, 1893.

Frank H. Gaub,
County Surveyor.

No. 500.

13 13 10 NE
11 SW



William A. Painter.

Robert Taylor Heiss.

E. 1/2 N.E. 2/4
Sec. 10, T. 13, R. 13.

N.W. Quarter Section 11,
T. 13, R. 13.

Notes

- "A," the northwest corner of the North west quarter Section 11, T. 13, R. 13.
- "B," the southwest corner said quarter section S 1° 40' W 160 p from A, on south bank of Martins Creek.

Surveyed for William A. Painter & Taylor Heiss

April 21, 1893.

Frank H. Gaub,
County Surveyor.