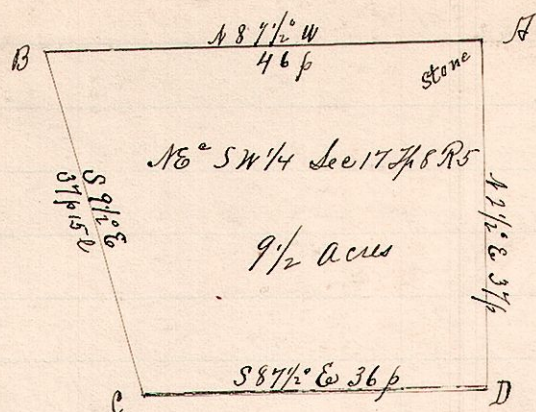


No. 509.

A 7 S 2
5 8 17 SW 16



Notes

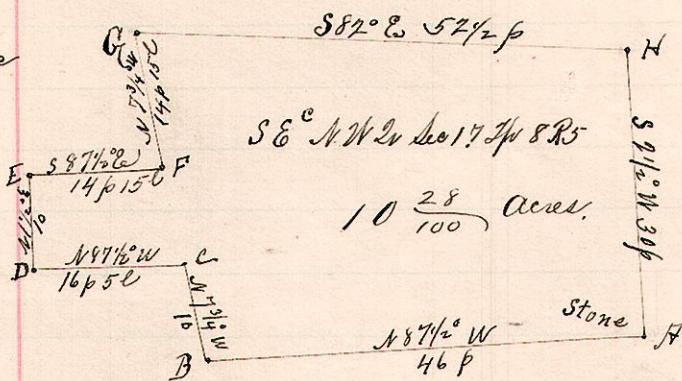
"A", stone at NW corner SW 2r Sec 17 T 8 R 5.
 "B", a post on N line said 2r N 87 1/2° W 46 perches from A
 "C", a post S 9 1/2° E 37 p 15 l from B
 "D", a post on east line of said quarter S 87 1/2° E 36 p from C, and S 2 1/2° W 37 p from A.

Dower of Sarah Conrad as set off by Order of Court and Surveyed July 20, 1893.

Frank H. Genet,
County Surveyor.

No. 510.

5 8 17 NW 36



Notes

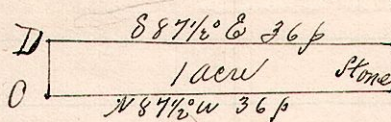
"A" stone at the southeast corner NW 2r Sec 17 T 8 R 5.
 "B", a post on S line said 9 p, N 87 1/2° W 46 p from A.
 "C", a post N 7 3/4° W 10 p from B.
 "D", a post N 87 1/2° W 16 p 5 l from C.
 "E", a post N 12° E 10 p from D.
 "F", a post S 87 1/2° E 14 p 15 l from E.
 "G", a post N 7 3/4° W 14 p 15 l from F.
 "H", post on E line S 82° E 52 p from G or N 2 1/2° E 30 p from A.

Surveyed the above part of Dower of Sarah Conrad, July 20, 1893.

Frank H. Genet,
Co. Surveyor.

No. 511.

5 8 17 SW 8 p



Notes

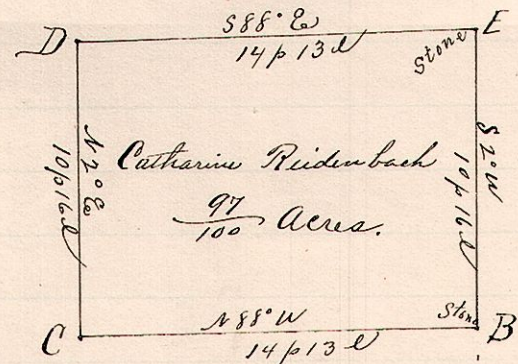
"A", a post S 2 1/2° W 37 perches from A stone at NE 1/4 Sec 17 T 8 R 5.
 "B", a stone S 2 1/2° W 4 p 11 l from A.
 "C", a post N 87 1/2° W 36 perches from B.
 "D", a post N 2 1/2° E 4 p 11 l from C, or N 87 1/2° W 36 p from A.

Surveyed for Sol. W. Conrad, et al. July 20, 1893.

Frank H. Genet,
County Surveyor.

No. 512.

12 14 11 NE 1/4



Notes.

"B", a stone N 2° E 20 p 3 l north of a stone on the Indian Boundary Line at the southeast corner of the NE 1/4 Sec 11 T 14 R 12.
 "C", a post N 88° W 14 p 13 l from B.
 "D", a post N 2° E 10 p 16 l from C.
 "E", a post in the public road on east line said NE 1/4 Sec 11 T 14 R 12, S 88° E 14 p 13 l from D, and N 2° E 10 p 16 l from B.

Surveyed for Catharine Ridenbach and other heirs of Elizabeth Wolf, July 27, 1893.

Frank H. Genet,
Co. Surveyor.