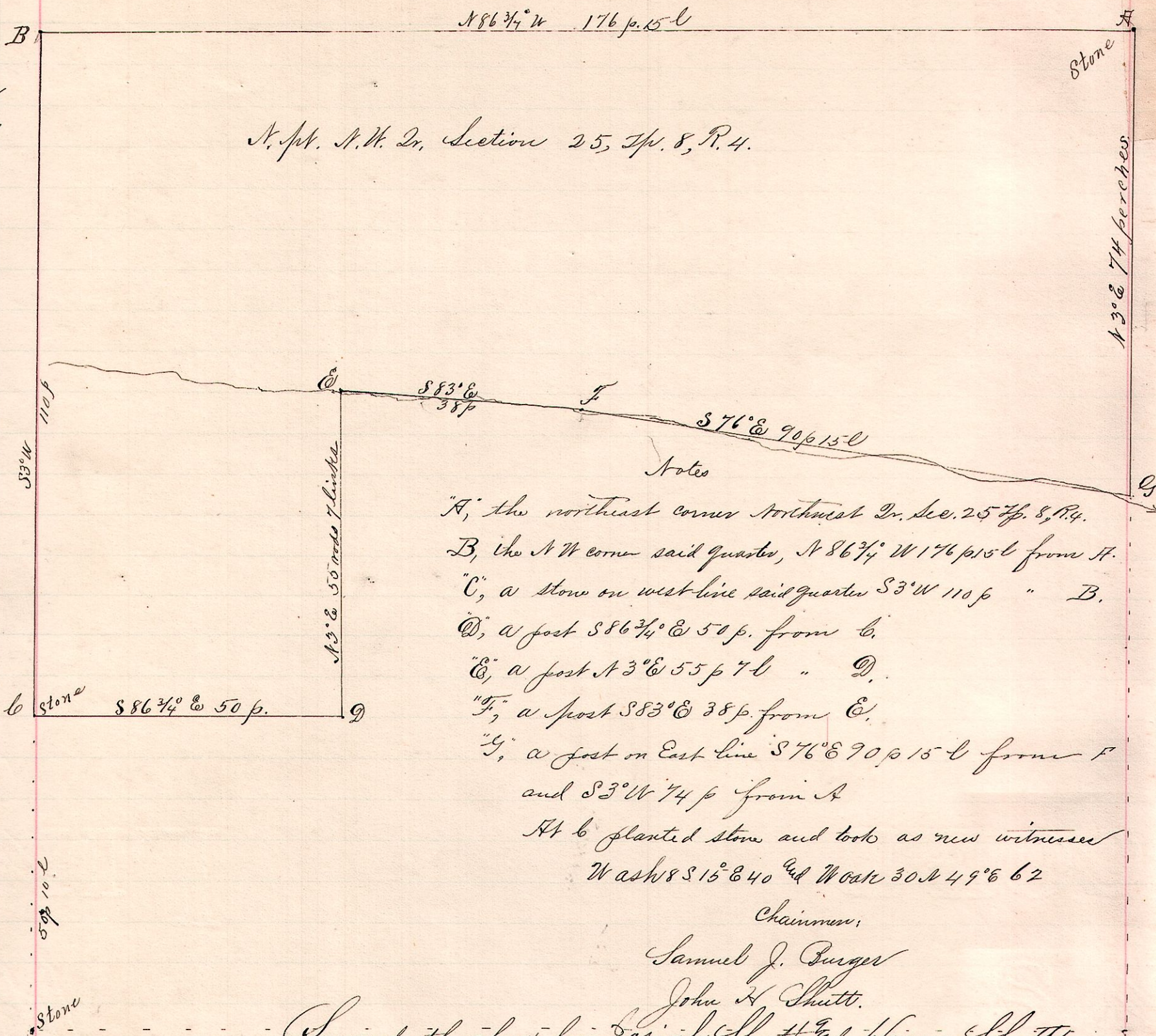


No. 518.

R. J. S Dr
4 8 25 M

N. W. N. W. Dr, Section 25, Tp. 8, R. 4.



Notes

"A", the northeast corner Northwest Dr. Sec. 25 Tp. 8, R. 4.
 "B", the NW corner said quarter, N 86 3/4° W 176 p. 15 l. from A.
 "C", a stone on west line said quarter S 3° W 110 p. " B.
 "D", a post S 86 3/4° E 50 p. from C.
 "E", a post N 3° E 55 p. 7 l. " D.
 "F", a post S 53° E 38 p. from C.
 "G", a post on East line S 76° E 90 p. 15 l. from F
 and S 3° W 74 p. from A

At C planted stone and took as new witnesses
 Wash 8 S 15° E 40 and W oak 30 N 49° E 62

Chairman,

Samuel J. Burger

John H. Shutt.

Surveyed the above for Josiah Shutt and Henry Shutt.

Frank H. Gunt, Co. Surveyor.

Oct. 9, 1893.

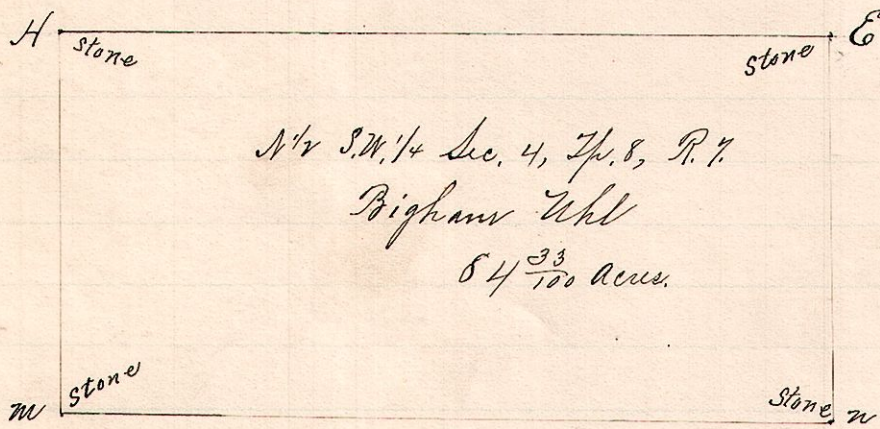
No. 519.

7 8 4 SW 1/4

N 1/2 S. W. 1/4 Sec. 4, Tp. 8, R. 7.

Bigham Uhl

84 33/100 acs.



Notes

New Witnesses at H

1. Beech 20 S 74 1/2° W 4 1/2 l.
 2. Beech 14 N 11 3/4° E 6 3 l.
- E. - Elm 7 S 78° E 24 l.

Chairman

Edward Gunt and Eli Harter.

Description.

Beginning at H, a stone at the northwest corner of the southwest quarter of section 4, Tp. 8, R. 7; thence S 3° 20' W, along the west line 83 p. 10 l. to a stone; thence S 86 3/4° E. 162 p. to a stone, on the east line of said quarter section; thence N 3 1/4° E, along said east line, 83 p. 8 l. to a stone at the northeast corner; thence N 86 3/4° W, along the north line of said quarter section 161 p. 15 l. to the place of beginning containing 84 33/100 acs.

Surveyed for Bigham Uhl, W. C. Stout, Hannah Dugan, et al.

Nov. 9, 10, 1893.

Frank H. Gunt,
 County Surveyor.