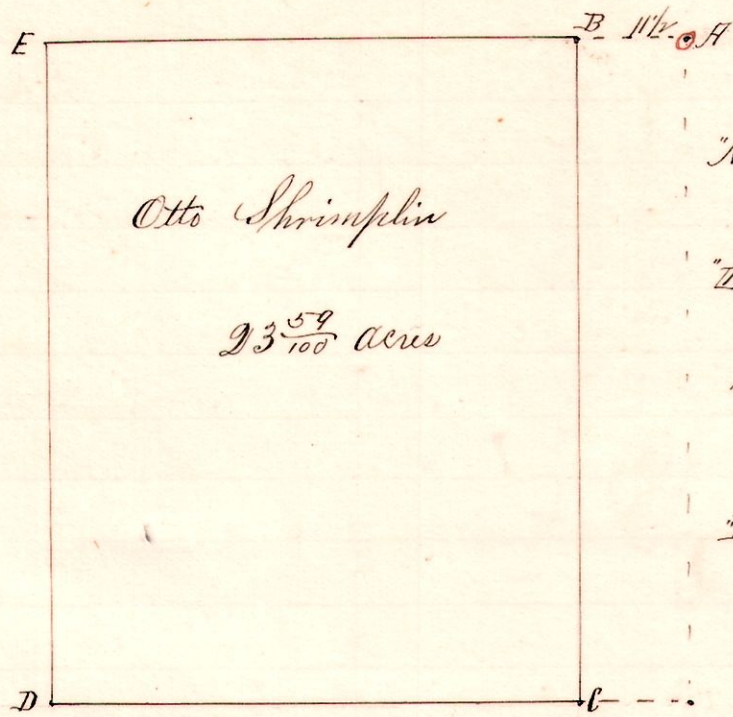


R 2p Sec 10 14th 24
8 8 10 SW 16 24

No. 10.



Notes.

"A," the northeast corner of the Southwest Quarter of Section 10, T₈S, R₈W.

"B," the place of beginning, is a post on the north line of said quarter 11 1/2 p west of A.

"C," a post on north line of lands of Geo Moritz, S 3 1/2 W. 68 p 18 l from B.

"D," a post on said north line of George Moritz land N 86 1/2 W 55 perches from C.

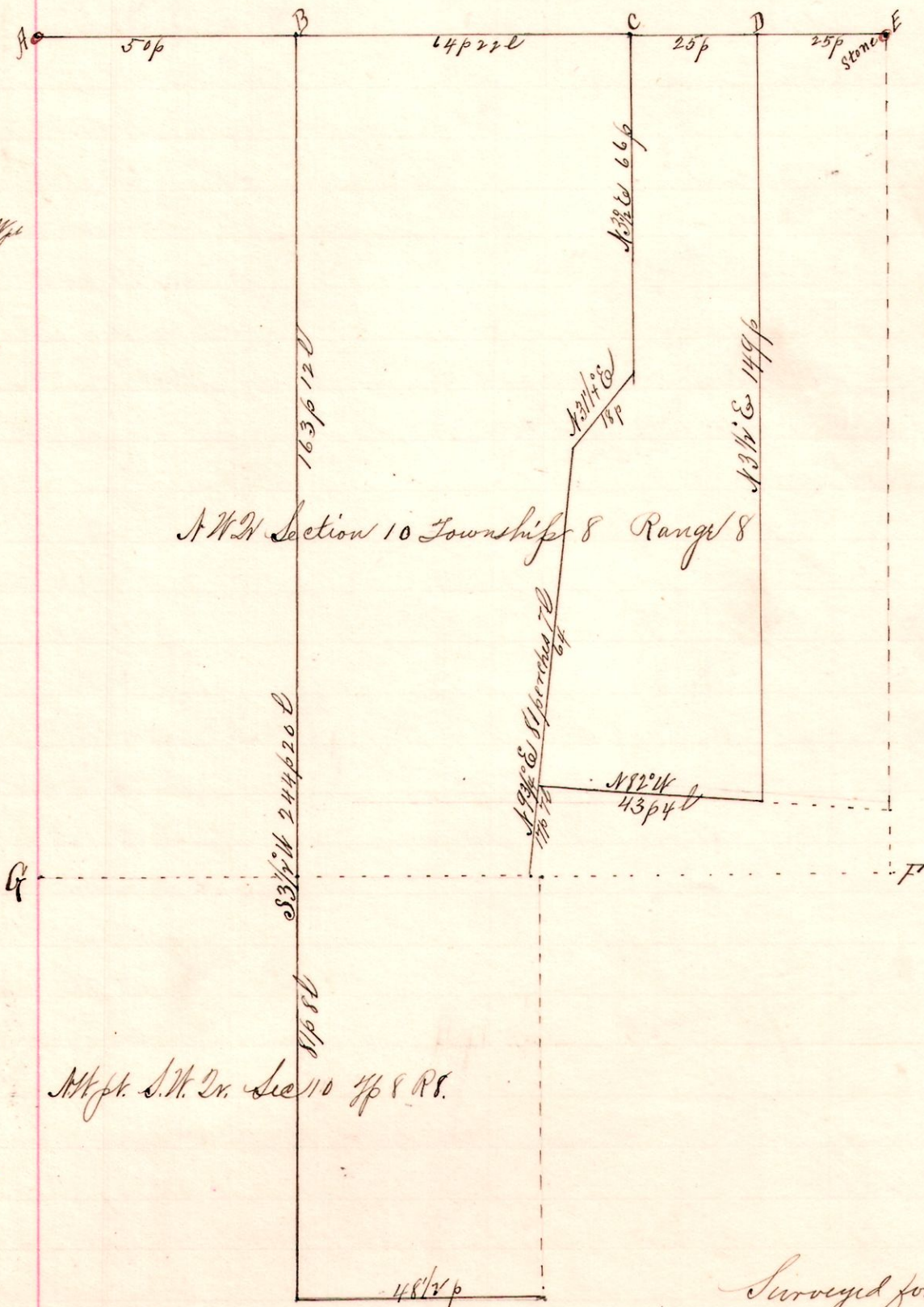
"E," a post on north line said quarter 55 perches west from B, and N 3 1/2 E 68 p 18 l from D.

Surveyed the above for Otto Shrimplin, Geo Moritz and others
August 24, 1893.

Frank H. Genet,
County Surveyor.

No. 11.

8 8 10 NW 2d 3rd 24



Notes.

"A" is the northwest corner of the Northwest Quarter of Section 10, T₈S, R₈W.

E, the northeast corner of said quarter.

The dotted line E F G represents the south line of said quarter.

Surveyed for Oliver, Otto & Simon Shrimplin

August 24, 1893.

Surveyed for Oliver, Otto & Simon Shrimplin

Frank H. Genet,
County Surveyor.