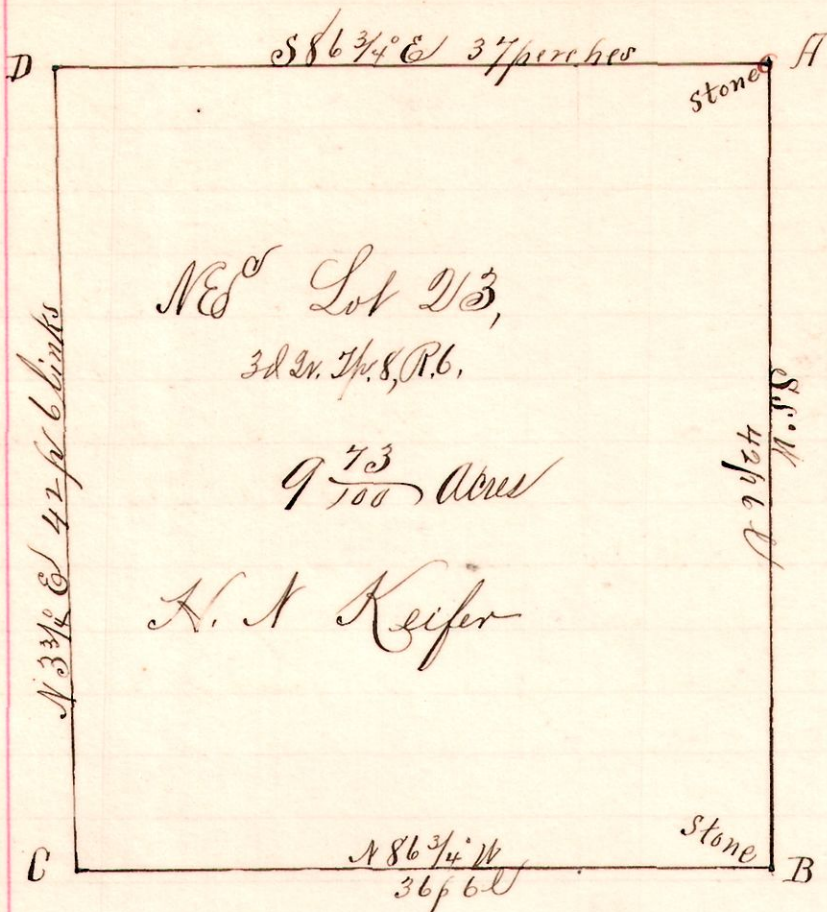


R 7<sup>th</sup> 2<sup>d</sup> 23<sup>rd</sup> N<sup>o</sup>  
6 8 3<sup>d</sup> 23<sup>rd</sup> N<sup>o</sup>

No. 21.



NE<sup>o</sup> Lot 23,  
3<sup>d</sup> 2<sup>d</sup> 23<sup>rd</sup> N<sup>o</sup>, R. 6.  
9 <sup>73</sup>/<sub>100</sub> Acres  
H. H. Keifer

Sept. 20, 1893.

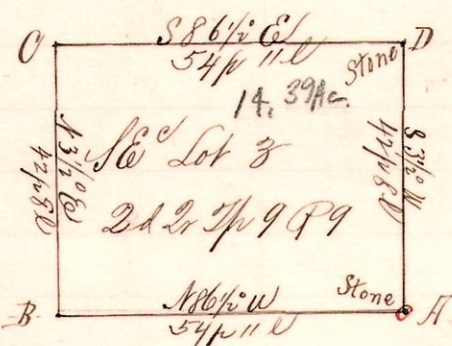
Notes  
"A", a stone at the northeast corner Lot 23, Third Quarter T<sup>h</sup>. 8, R. 6.  
"B", a stone on East line S 5<sup>o</sup> W 42 p 6 l from A  
"C" post N 86 <sup>3</sup>/<sub>4</sub> W 36 p 6 l from B.  
"D", a post on the north line of said Lot, N 3 <sup>3</sup>/<sub>4</sub> E 42 p 6 l from C and S 86 <sup>3</sup>/<sub>4</sub> E 37 perches to A, place of beginning.

Surveyed for H. H. Keifer, et al,

Frank H. Genet,  
County Surveyor.

9 9 2<sup>d</sup> 3 38<sup>o</sup>

No. 22.



SE<sup>o</sup> Lot 3  
2<sup>d</sup> 2<sup>d</sup> 23<sup>rd</sup> N<sup>o</sup>, R. 9  
14.39 Ac.  
A. D. Cline

Surveyed for S. D. Cline and Albert E. Cline, Sept. 23, 1893.

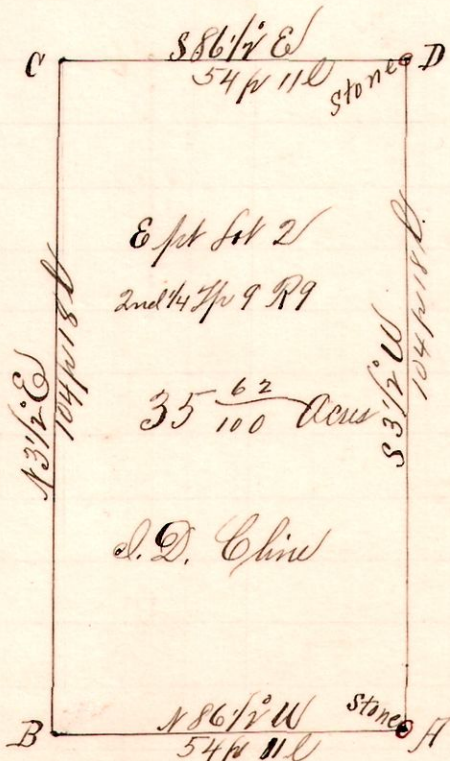
Notes

"A" is a stone at the southeast corner Lot 3, Second 2<sup>d</sup> T<sup>h</sup>. 9, R. 9. (Knox)  
"B", a post on the south line of said Lot N 86 <sup>1</sup>/<sub>2</sub> W 54 p 11 l from A  
"C", a post N 3 <sup>1</sup>/<sub>2</sub> E 42 p 8 l from B.  
"D", a stone on the east line S 86 <sup>1</sup>/<sub>2</sub> E 54 p 11 l from C and 42 p 8 l S 3 <sup>1</sup>/<sub>2</sub> W to A.

Frank H. Genet,  
County Surveyor.

No. 23.

9 9 2<sup>d</sup> 2 38<sup>o</sup>



E 1<sup>st</sup> Lot 2  
2<sup>nd</sup> 2<sup>d</sup> T<sup>h</sup>. 9, R. 9  
35 <sup>62</sup>/<sub>100</sub> Acres  
S. D. Cline

Surveyed the above described tract for S. D. Cline, A. E. Cline, et al, Sept. 23, 1893.

Notes.  
"A", stone at the southeast corner Lot 2, 2<sup>nd</sup> 2<sup>d</sup> T<sup>h</sup>. 9, R. 9.  
"B", a post on the south line of said Lot 2, N 86 <sup>1</sup>/<sub>2</sub> W 54 p 11 l from A.  
"C" a post on north line N 3 <sup>1</sup>/<sub>2</sub> E 104 p 18 l from B.  
"D", a stone at the northeast corner of said Lot 2, S 86 <sup>1</sup>/<sub>2</sub> E 54 p 11 l from C, and S 3 <sup>1</sup>/<sub>2</sub> W 104 p 18 l to A.

Frank H. Genet,  
County Surveyor.