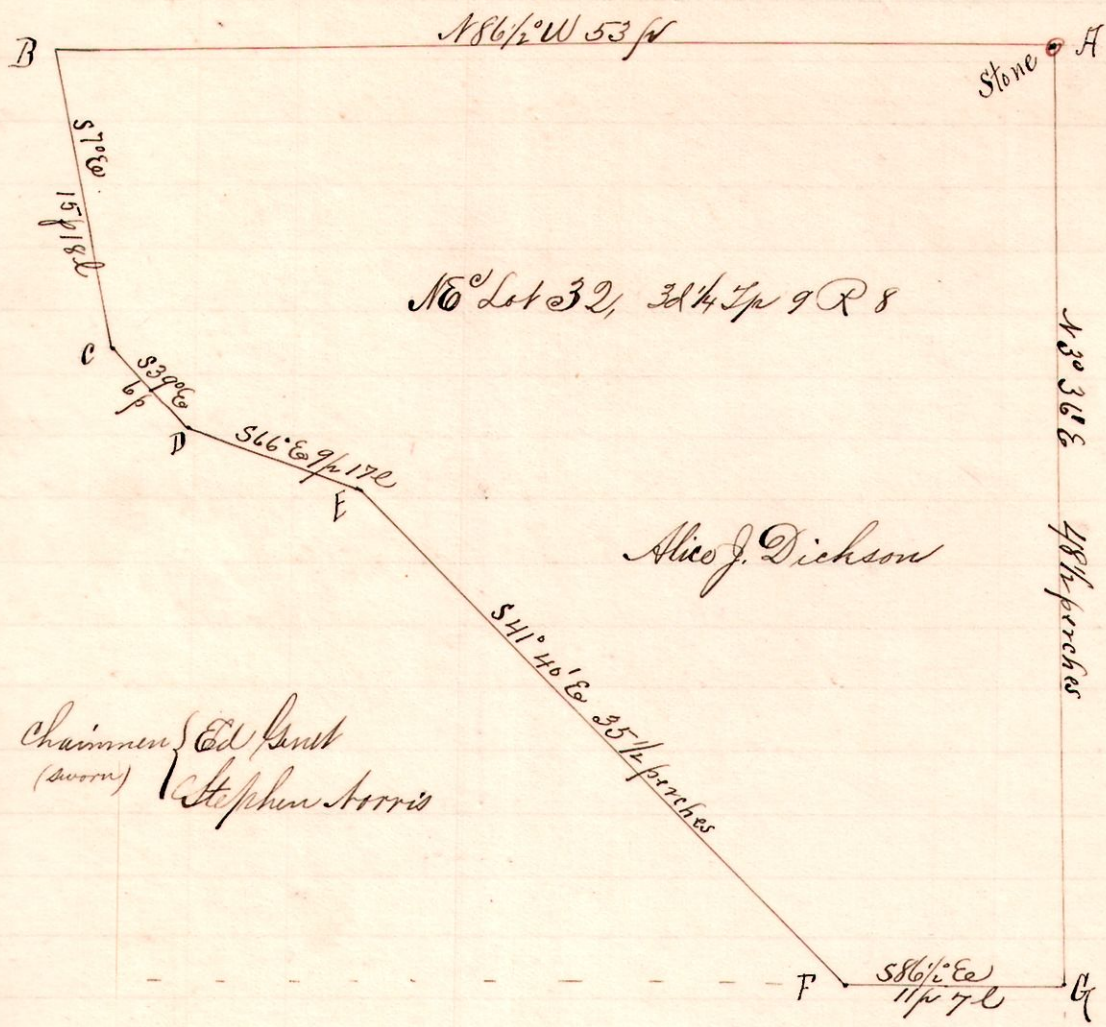


R Tp 2v Lot
8 9 3" 32 N6

No. 24.



Chainmen } Ed Genet
(sworn) } Stephen Norris

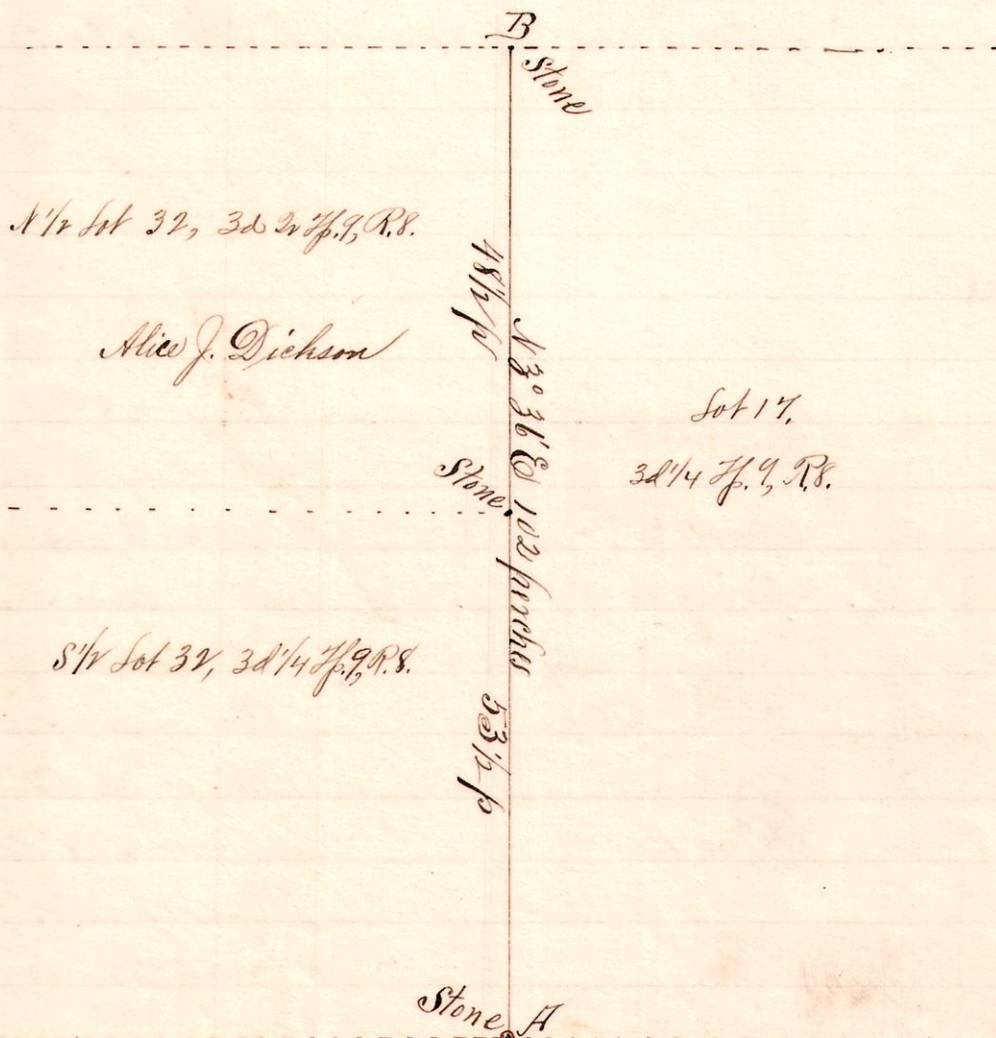
Notes.
 "N" stone at Northeast corner Lot 32, 3d 2p 9 R 8.
 Original Chestnut 105 7 9 W 15 l Still Standing; to as new witness Hickory 4 15 7 1/2 E 1 1/2 p
 "B", a post on north line in public road N86 1/2 W 53 p from A.
 "C", a post S7 1/2 E 15 p from B.
 "D", " " S39 1/2 E 6 p " C
 "E", " " S66 1/2 E 9 p 17 l " D
 "F", " " S41 1/2 E 35 1/2 p " E
 G, a stone on the east line, at the southeast corner of that 1/2 said lot, S86 1/2 E 11 p 7 l from F, 4 13 3/4 to A 48 1/2 p
 D, E, F are in the public road.

Surveyed for Alice J. Dickson, Margaret A. Norris, M. Normay, et al,
Dec 6, 1893.

Frank H. Genet,
County Surveyor.

No. 25.

8 9 3" 32 17



Notes.
 "N" stone at the southeast corner Lot 32; also the southwest corner Lot 17, 3d 1/4 p 9 R 8.
 Found Original Chestnut Stump.
 Took as new witness to A:
 { Hickory 6 S 17 1/2 W 6 links
 Lot 5 N 42 W 5 "
 "B", a stone at the northeast corner said Lot 32 and at Northwest corner said Lot 17, N 33 3/4 E 102 p from A.
 Assistants
 Stephen Norris
 Edward Genet
 M. Normay.

Surveyed for Stephen Norris, Alice J. Dickson, M. Normay, et al,
Dec. 6, 1893.

Frank H. Genet,
County Surveyor.